

OCEANIS 40.1

E-BOOK



BENETEAU
AVANT-GARDE IN BOATING

Key Points

GENERAL SPECIFICATIONS

• L.O.A	12,87 m / 42'3"
• Hull length	11,99 m / 39'4"
• L.W.L.	11,70 m / 38'5"
• Beam	4,18 m / 13'9"
• Standard draft (Cast iron)	2,17 m / 7'1"
• Deep ballast weight	2 007 kg / 4,423 lbs
• Shallow draft (Cast iron)	1,68 m / 5'6"
• Shallow ballast weight	2 237 kg / 4,930 lbs
• Performance draft (Cast iron)	2,27 m / 7'5"
• Ballast weight performance	2 004 kg / 4,417 lbs
• Air draft	18,33 m / 60'2"
• Air draft (Performance mast)	18,78 m / 61'7"
• Light displacement	7 985 kg / 17,600 lbs
• Fuel capacity (standard)	195 L / 52 US Gal
• Fresh water capacity (standard)	235 L / 62 US Gal
• Fresh water capacity (Option)	330 L / 87 US Gal
• Engine power :	
- Shaft Line	45 CV CR / 45 HP CR

EC CERTIFICATION *

• Category A	10 personnes
• Category B	10 personnes
• Category C	10/12 personnes

NAVAL ARCHITECT / DESIGNERS

• Naval Architect:	Marc Lombard
• Interior Design:	Nauta Design

SAILS DIMENSIONS

• Furling mainsail (standard)	34,70 m² / 373 sq/ft
• Self-tacking jib (standard)	26,90 m² / 290 sq/ft
• Classic mainsail	41,80 m² / 450 sq/ft
• Furling genoa (105 %)	34,40 m² / 370 sq/ft
• Code 0	61,10 m² / 658 sq/ft
• I	15,13 m / 49'8"
• J	4,77 m / 15'8"
• P furling mast	14,69 m / 48'2"
• P Classic mast	14,83 m / 48'8"
• E	5,08 m / 16'8"

PERFORMANCE (Extended classic mast + 0,45 m / 1'6")

• Classic mainsail	43,20 m² / 465 sq/ft
• Genoa	36,50 m² / 392 sq/ft
• I	15,65 m / 51'4"
• J	4,78 m / 15'8"
• P	15,40 m / 50'6"
• E	5,00 m / 16'5"



Following in the wake of the new cruiser generation

Smart

New generation hull: the stepped hull increases the habitable volume

Easy

A standard designed to be as simple as possible: in-mast furling system, self-tacking jib, 2 winches on the roof.

Cruising made simple

Comfort large cockpit worthy of a 45' sailing yacht, spacious interior volumes, large berths, natural light and sea view

First Line version, performance mast, deck gear upgrade: to make the most of the hull's potential

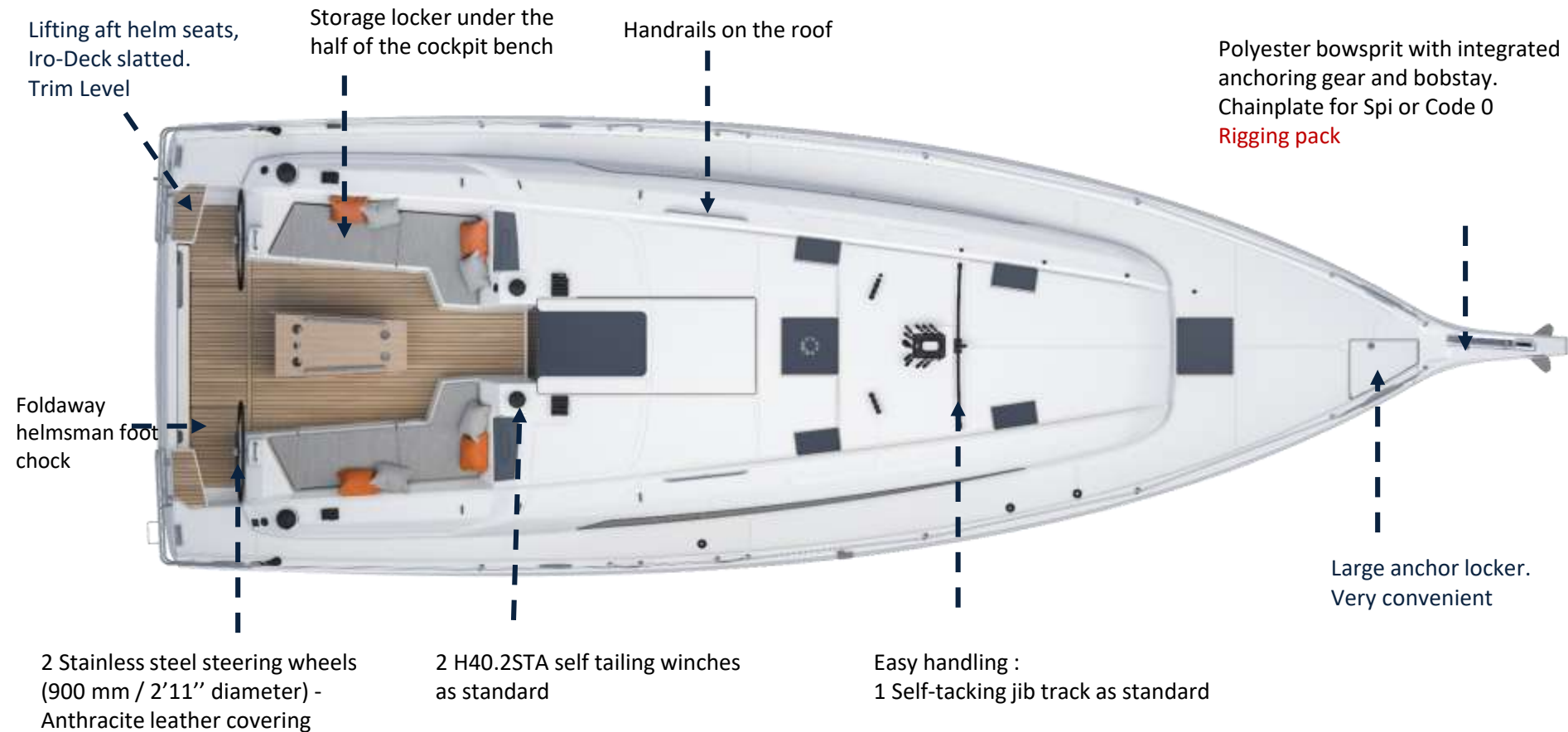
A choice of 3 keels to adapt to the sailing grounds or to increase sail stiffness

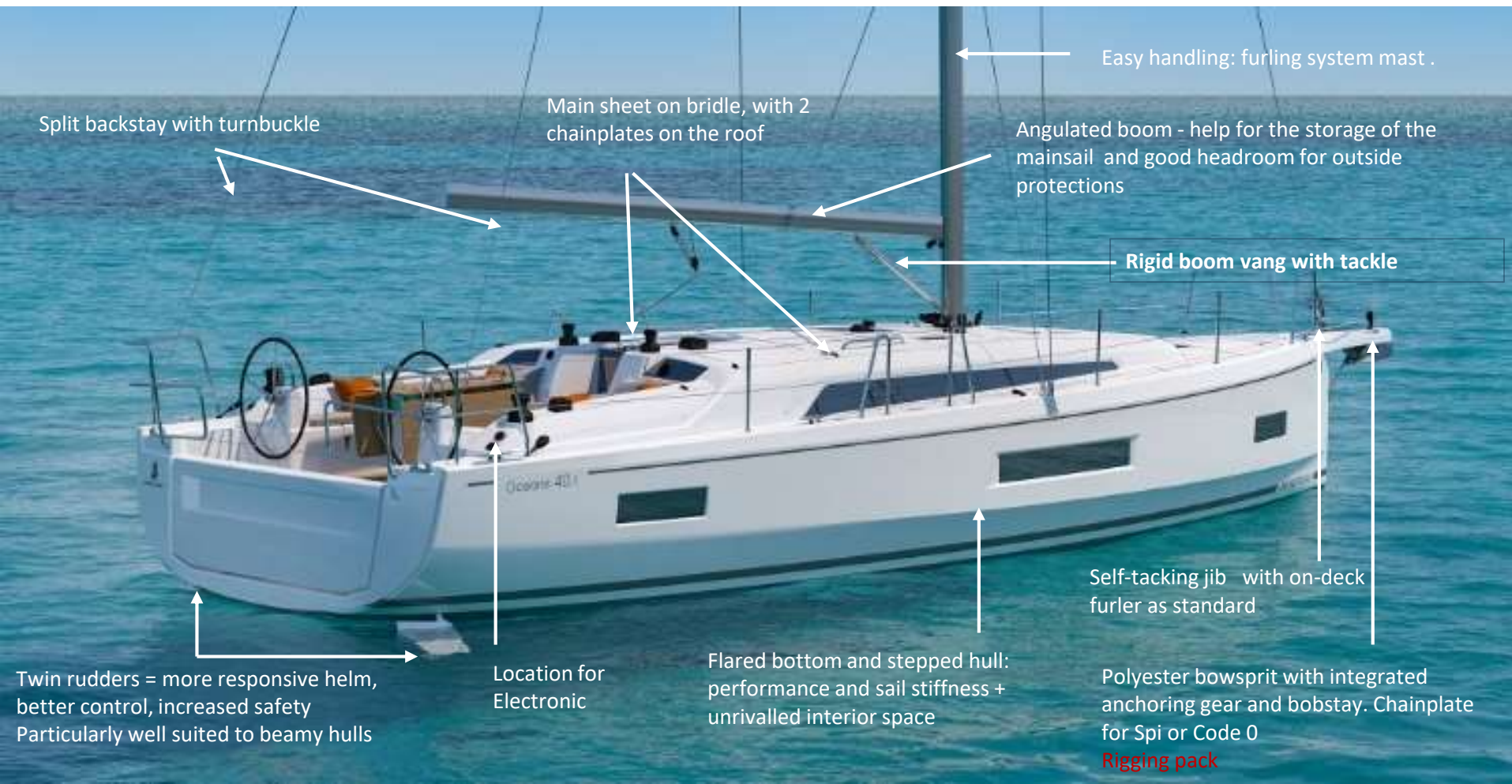


Oceanis know-how: comfort, space and high-performance hull



Oceanis know-how: comfort, space and high-performance hull:





Oceanis know-how: comfort, space and high-performance hull:

3 large cockpit tables offered
Allow the BIB to be stored in the central part: frees one cockpit locker for bigger storage capacity

Opening portholes for aft cabins . **Option.**

H46.2STA manual genoa winches
Rigging Pack.
Electric winches **as option**

L-shaped cockpit seating: to provide good support when heeled or for use as a lounge
Outside upholstery available **as option.**

Aft fairleads **Option**

Slatted Iro-Deck cockpit **as option**

Long intermediate step for easy movement between cockpit and platform

Large Iro-Deck slatted bathing platform with an integrated fixed telescopic ladder
Electric opening as **option**

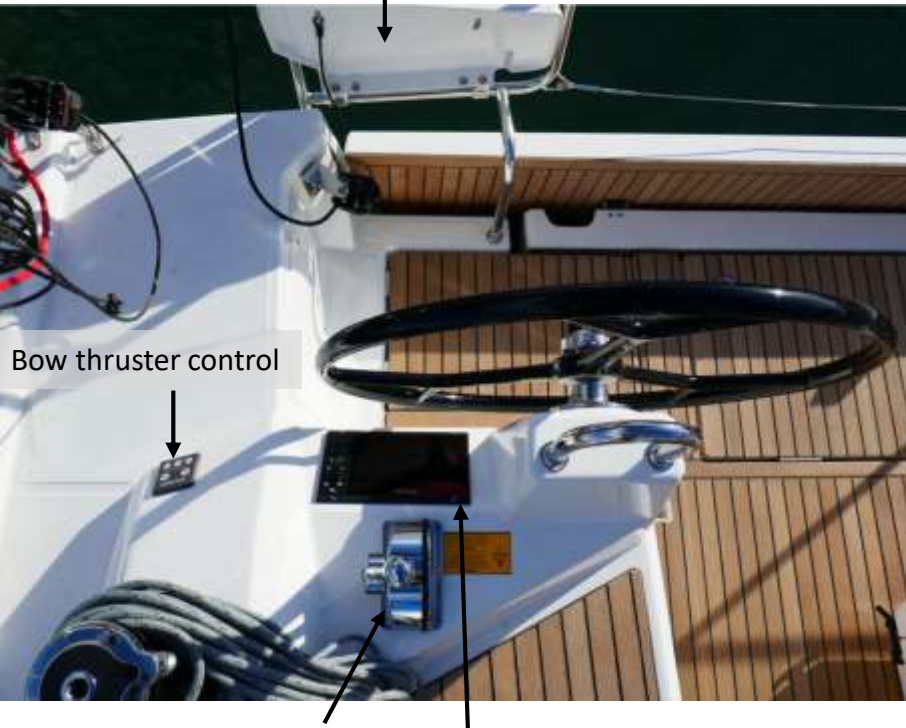
Large locker integrated in cockpit sole: 1 part for technical access, one part to store gas bottles

2,65 m x 0,80 m / 8'8" x 2'7"



Aft lifting helm seat
Trim Level, Iro-Deck slatted

Outboard engine bracket
Option



Bow thruster control

Engine control.
Easy access

Coastal Pack: 7" screen to
starboard



Genoa winch + clutches
(Rigging Pack)

Coastal Pack: display to port

Halyard bags location.
Trim level

Opening portholes in aft
cabins. **Option**

Genoa winch
(**Rigging pack**)

Optional BE T17 'Luxe' cockpit table
-wood/polyester. Refrigeration unit
available as **option**.

Large locker



2 Self tailing coachroof winches (H40.2 STA). Standard

3 choices for cockpit tables

Standard cockpit table:



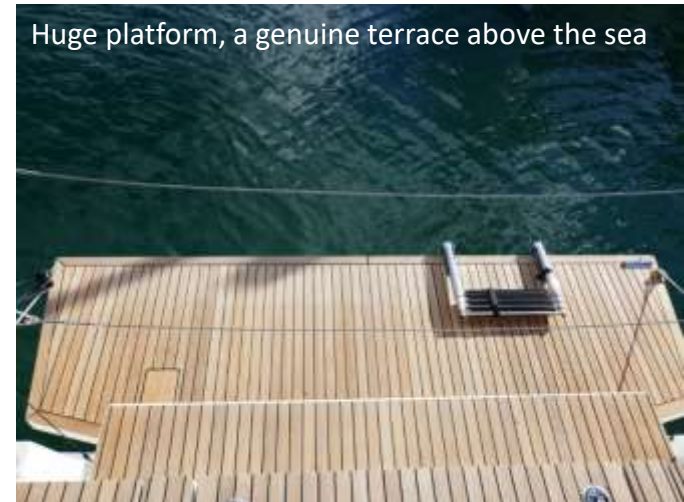
BET17 Luxe wood/polyester cockpit table: Solid wood on the top. Delivered with cadet grey cover.



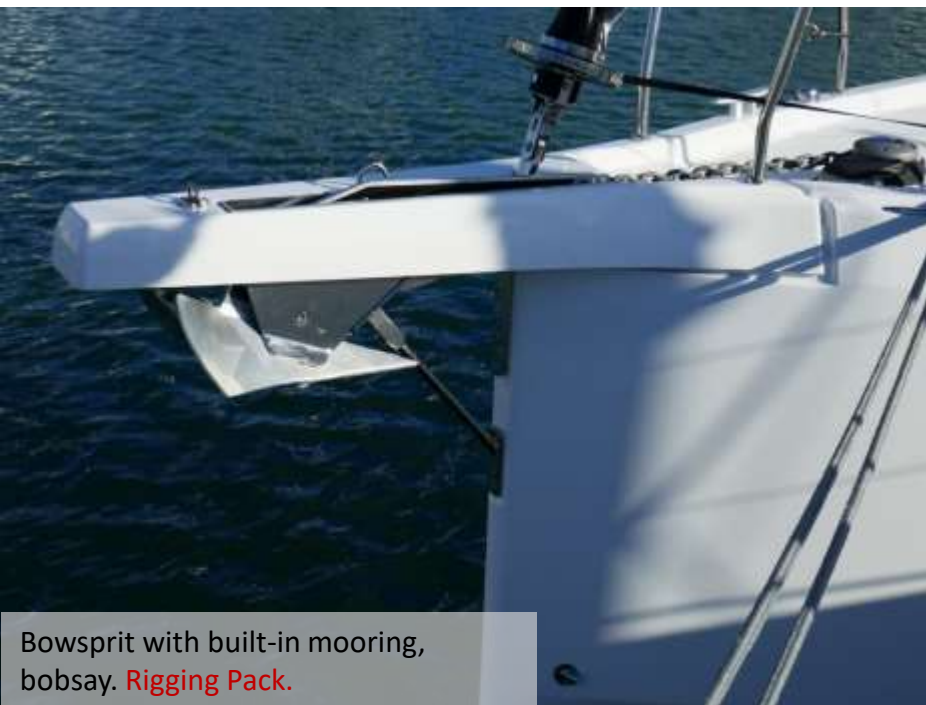
BET17P Luxe Polyester cockpit table: Same shape as BET17 but no wood part. Delivered without cover.



12V Refrigerator unit available as option for both Luxe tables







Performance: the First Line Pack

High-end fittings, extended mast, increased sail area.

A configuration to sublimate the great potential of the hull

- Polyester bowsprit with integrated anchoring gear and bobstay (for Code 0 and asymmetric spinnaker)
- Performance Classical aluminium mast, tapered, (Z Diffusion), 2 Aft swept spreaders (+ 0,45m / 1'6")
- Cascading backstay
- Cathedral type Dyform standing rigging
- Flatdeck genoa furler
- Additional jammers: 1 triple jammer on coaming to port and starboard for mainsail sheet, genoa sheet, adjustment of genoa sheet traveller (hauling line) + 1 single jammer on roof for spinnaker halyard/code 0
- Performance running rigging, Dyneema (Mainsail, Genoa, Code 0, Asymmetric spinnaker, Halyards)
- German system (Two-way mainsheet at the helm station)
- Harken pulleys upgrade (in lieu of standard) - 12 E60 blocks + 4 E80 blocks
- Genoa sheet tracks on side decks + Genoa sheets
- 2 Genoa sheet manual winches (H46.2 STA)
- Black composite steering wheels
- Performance hull decoration

! Boat delivered without sails.
Performance sails as option



Fast

An interior that is a joy to live in

Spaces

- A voluminous living space thanks to the stepped hull and the location of the galley towards the bow
- Very balanced height to deck beam
- A fore cabin worthy of a 45' sailing yacht

Comfort

- A long worktop with a good amount of storage space: a galley designed to make life on board easier and cooking meals a pleasure
- Large berths
- Long U-shaped sofa, central seat section removable: excellent seating capacity around the table

Harmony

- Once again, Nauta Design has designed a beautiful boat with lots of natural light, a choice of interior atmospheres and carefully studied ergonomics, making her a joy to live aboard



Layouts to match all types of uses

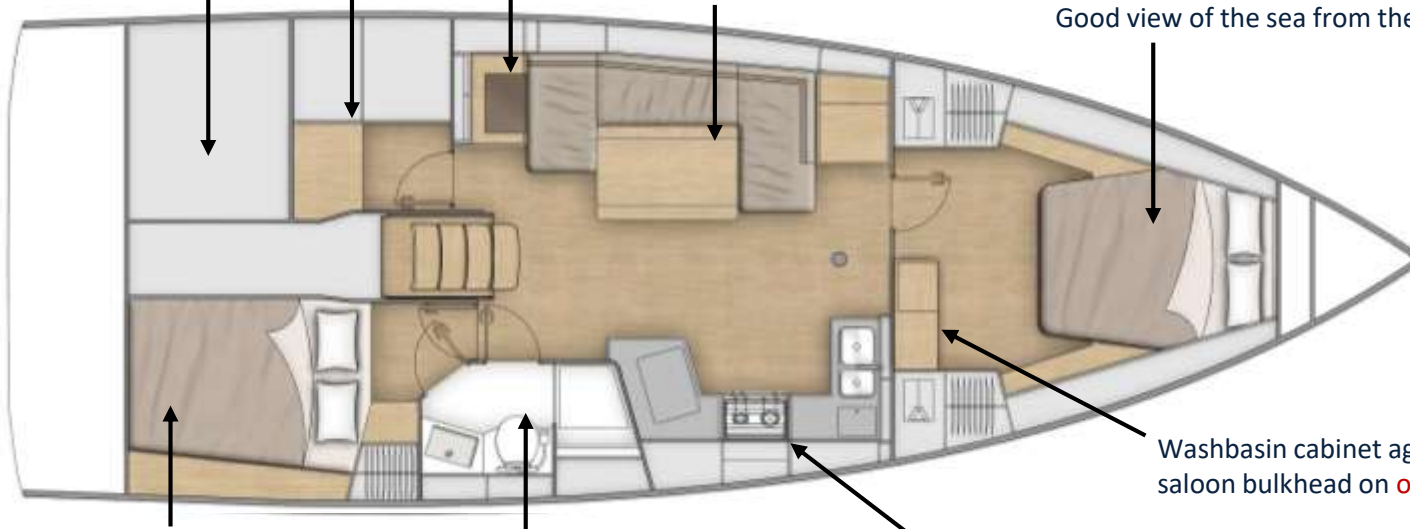
Portside workshop as standard. Good amount of storage space with shelves along the hull

Very large sail locker that can be accessed from the cockpit bench

Chart table at the bottom of the companionway.
Drop down table top

Large U-shaped bench
Large fixed table

Very spacious fore cabin, large double bed (2.03 x 1.60 m - 1.31 m / 6'8" x 5'3" - 4'4") with comfortable access to either side of the bed
2 large storage spaces: hanging locker and shelves
Open overhead shelves along the hull
Good view of the sea from the bed



Big bed (2.04 m x 1.37 x 1.21 m / 6'8" x 4'6" x 4'),
Hanging locker
Ensuite shower room

Shower room with a spacious shower with a plexiglass door for easier use
Manual toilet with rigid 80 L / 21 US Gal tank

Very large C-shaped galley, long worktop, good refrigeration capacity, 190 L icebox with a 10 L freezer. Stainless steel sink with 2 bowls Overhead shelves and 2 base cabinets for storage.

Washbasin cabinet against the saloon bulkhead on **option**

Layouts to match all types of uses

Thanks to the hull's large interior volume two highly optimized versions are available for the requirements of the Charter market.
 The 2 variants of the bow section do not affect the saloon or galley spaces.



3C2T

3C2T: a good layout for Yacht Management programmes
 The owner has a spacious fore cabin with an ensuite shower room

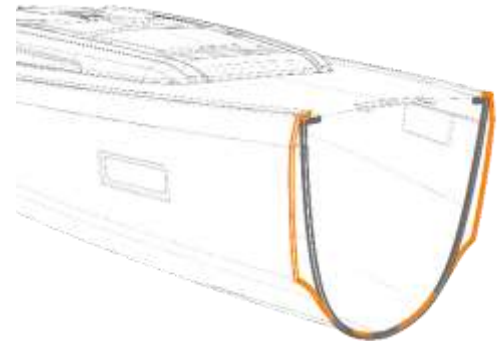
Central queen size bed
 Portside storage with hanging locker and shelves
 Large ensuite shower room with shower compartment well protected by a plexiglas door



4C2T

4C2T: ideal for charter use.
 The interior volume allows a layout with 2 symmetrical cabins at the bow, each with a wardrobe.

The chart table leaves room for a 2nd port aft bathroom



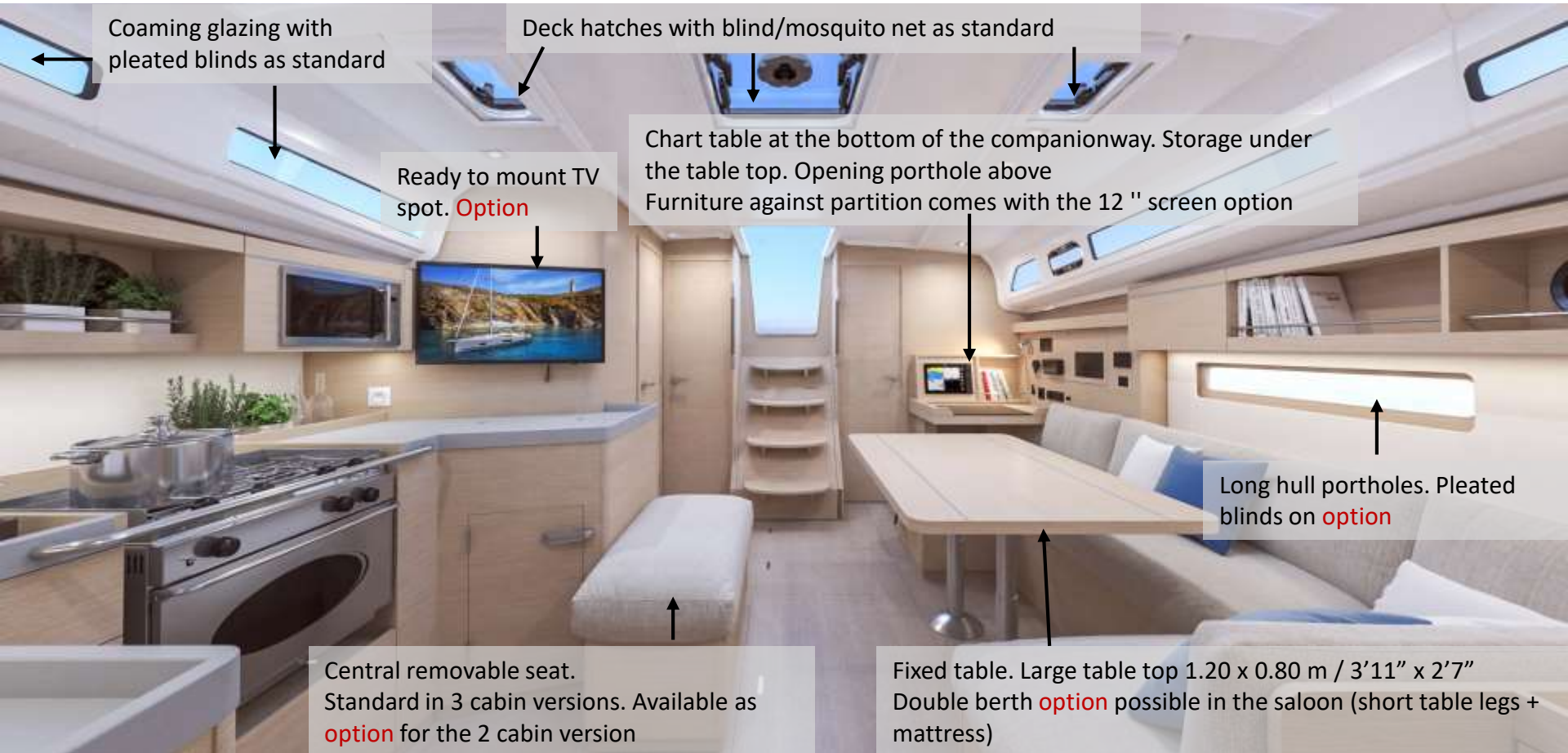


Base cabinet with a large storage capacity

Beige padded lining in the saloon as standard

White oak alpi atmosphere +
Rovere Aleve flooring

2 covered handrails, gentle slope



Coaming glazing with pleated blinds as standard

Deck hatches with blind/mosquito net as standard

Ready to mount TV spot. **Option**

Chart table at the bottom of the companionway. Storage under the table top. Opening porthole above Furniture against partition comes with the 12 " screen option

Long hull portholes. Pleated blinds on **option**

Central removable seat. Standard in 3 cabin versions. Available as **option** for the 2 cabin version

Fixed table. Large table top 1.20 x 0.80 m / 3'11" x 2'7" Double berth **option** possible in the saloon (short table legs + mattress)



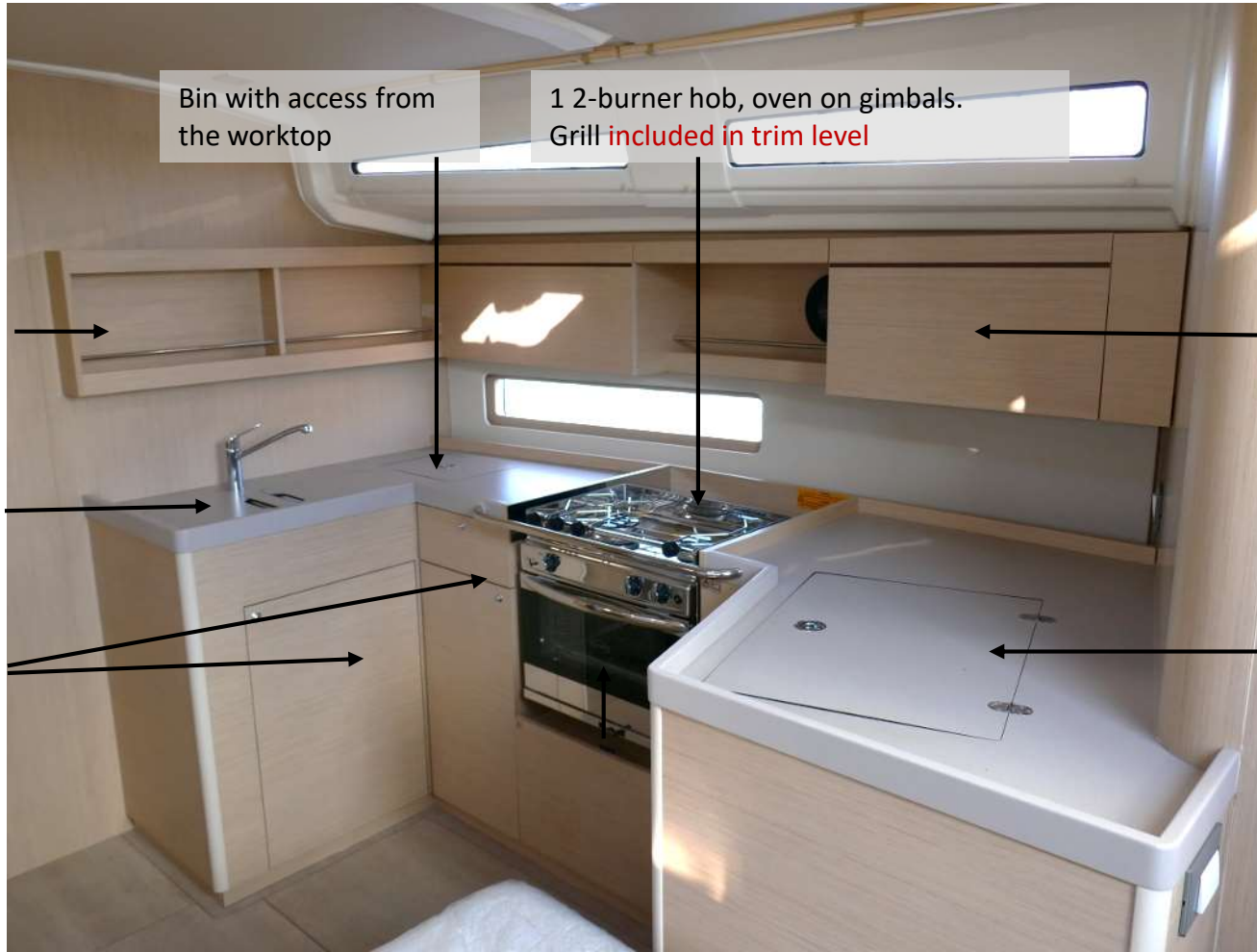


White oak alpi:
option

Beige padding
upholstery in
saloon. Standard

Neo 05
upholstery:
standard

Rovere Aleve
floors: standard



Bin with access from the worktop

1 2-burner hob, oven on gimbals.
Grill **included in trim level**

Storage in the overhead shelves

Closed storage or optional site for microwave

Double sink with covers matching the worktop (included in **trim level**)

Base cabinet storage with shelves and cutlery drawer

Icebox 190 L including a 10 L freezer. Opening from above + front opening included in **trim level**

Storage locker in the saloon



Large storage capacity:

1 front door and storage with access from the top at the back of the cabinet



Coaming glazing with pleated blinds as standard



Focus on the 4 cabins layout

4 main changes to have in mind compared to the other layouts



1 Port aft head compartment (shorten storage in the aft cabin and takes the place of the chart table)

2 Longer sofa than on the other layouts

3 Multi-use low unit: large storage with shelves + welcome equipment of the chart table such as 12V panel, Fusion, VHF...)

4 Large forward cabins with double berth: thanks to the hull shape similar size to the one in the Oceanis 46.1. Storages are everywhere: wooden closet with shelves, storage under bed, deep storage at bed head

4 cabins layout with standard walnut alpi



Access to forward cabins



Symmetrical forward cabins with double berth and plenty of storage space

Large storage at bed head

Large closet with shelves



Large locker under bed



The background is a solid blue color. In the top-left corner, there are several overlapping, curved, light-blue shapes that resemble stylized waves or the edge of a circle. In the bottom-right corner, there is a single, larger, light-blue curved shape that also resembles a wave or a partial circle.

Ambiance

INTERIOR AMBIANCE

Wood & Floor

		40.1
Alpi	Walnut	✓
	White oak	✓
Laminated floors	Rovere Alévé	✓
	Brown oak (only with white oak alpi)	✓



STANDARD: Walnut alpi + Rovere Alévé floors



OPTION: White oak alpi + Rovere Alévé floors



OPTION: White oak alpi + Laminated Brown Oak floors



INTERIOR AMBIANCE

INTERIOR UPHOLSTERY

40.1		
Interior upholstery	Néo 05	✓
	Marlin Weiss	✓
	Winner Silver 139	✓
Covering on handrails	Anthracite	✓



Néo 05



Marlin Weiss



Winner Silver 139

PADDING UPHOLSTERY

40.1		
Saloon	Beige	✓
Cabines Included in Comfort trim level	Beige	✓
Saloon & Cabins	Macadamia	✓



Beige



Macadamia

EXTERIOR AMBIANCE

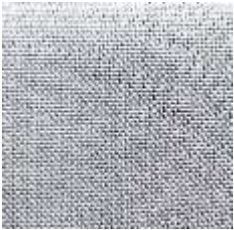
EXTERIOR UPHOLSTERY

		40.1
Cockpit seats	Dolce 51	✓

HULL COLOUR

		40.1
Hull colour	White gel coat (RAL 9016) + hull decorated in metallic grey	✓
	Pearl grey gel coat (RAL 7004) + hull decorated in white	✓

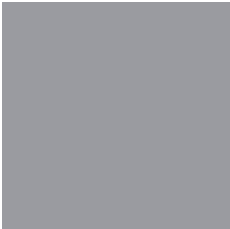
Dolce 51



Cadet Grey



Pearl Grey



EXTERIOR PROTECTIONS

40.1			
Covers	« Luxe » Cockpit table	<i>Cadet Grey</i>	✓
	Wheels	<i>Cadet Grey</i>	✓
Lazy Bag	Included in Classic Mast Pack	<i>Natural</i>	✓

COVERS – LAZY BAG

			40.1
Sprayhood	Cadet Grey	✓	
Bimini		✓	
Cockpit aft closing		✓	

Offered layouts



2C 1H+ workshop



3C 1H



3C1H + optional washbasin
furniture in forward cabin.



3C 2H



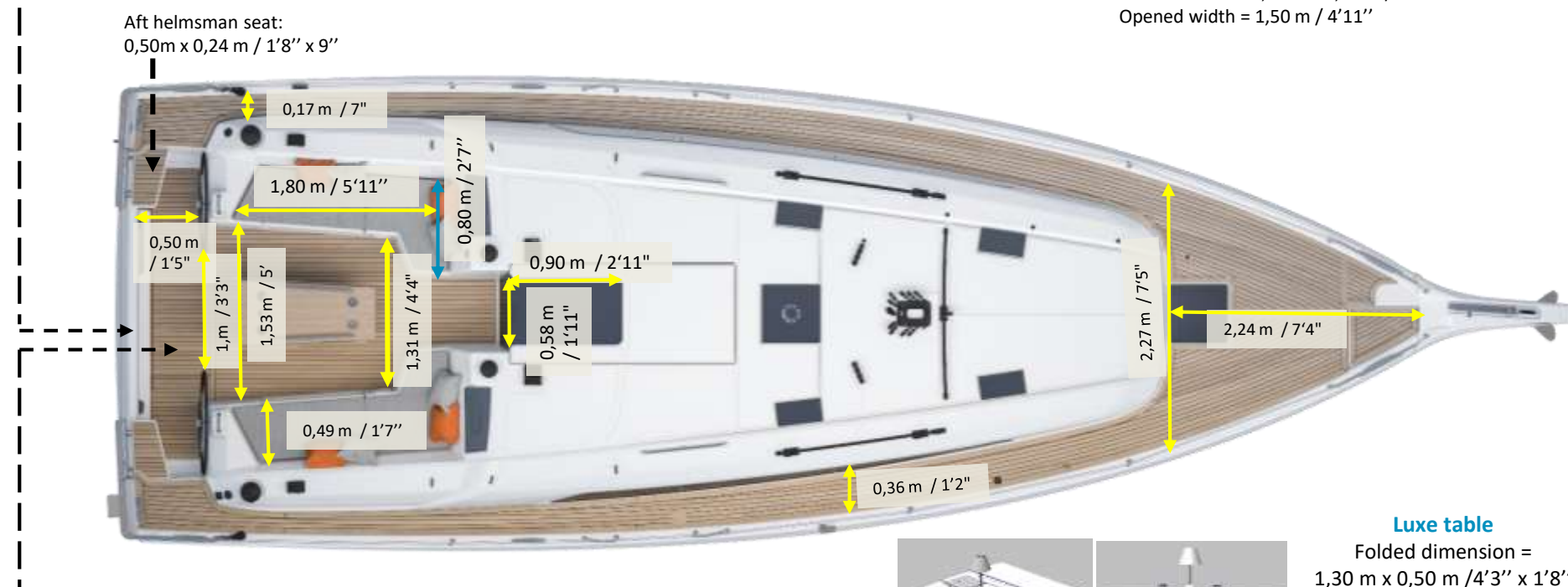
4C 2H

Exterior dimensions

Exterior dimensions

Aft platform:
2,65 m x 0,80 m / 8'8" x 2'7"

Aft helmsman seat:
0,50m x 0,24 m / 1'8" x 9"



Gas locker
(0,39m x 0,39m / 1'3" x 1'3" - Height: 0,51m / 1'8")

Standard cockpit table:

Folded dimension = 1,20 m x 0,57 m / 3'11" x 1'10"

Wooden leafs = 1,15 m x 0,46 m / 3'9" x 1'6"

Opened width = 1,50 m / 4'11"

Luxe table

Folded dimension =

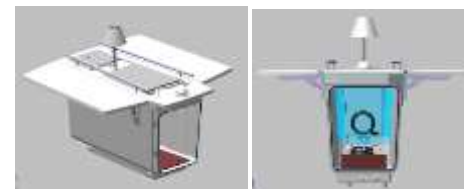
1,30 m x 0,50 m / 4'3" x 1'8"

Wooden leafs =

1,10 m x 0,40 m / 3'7" x 1'4"

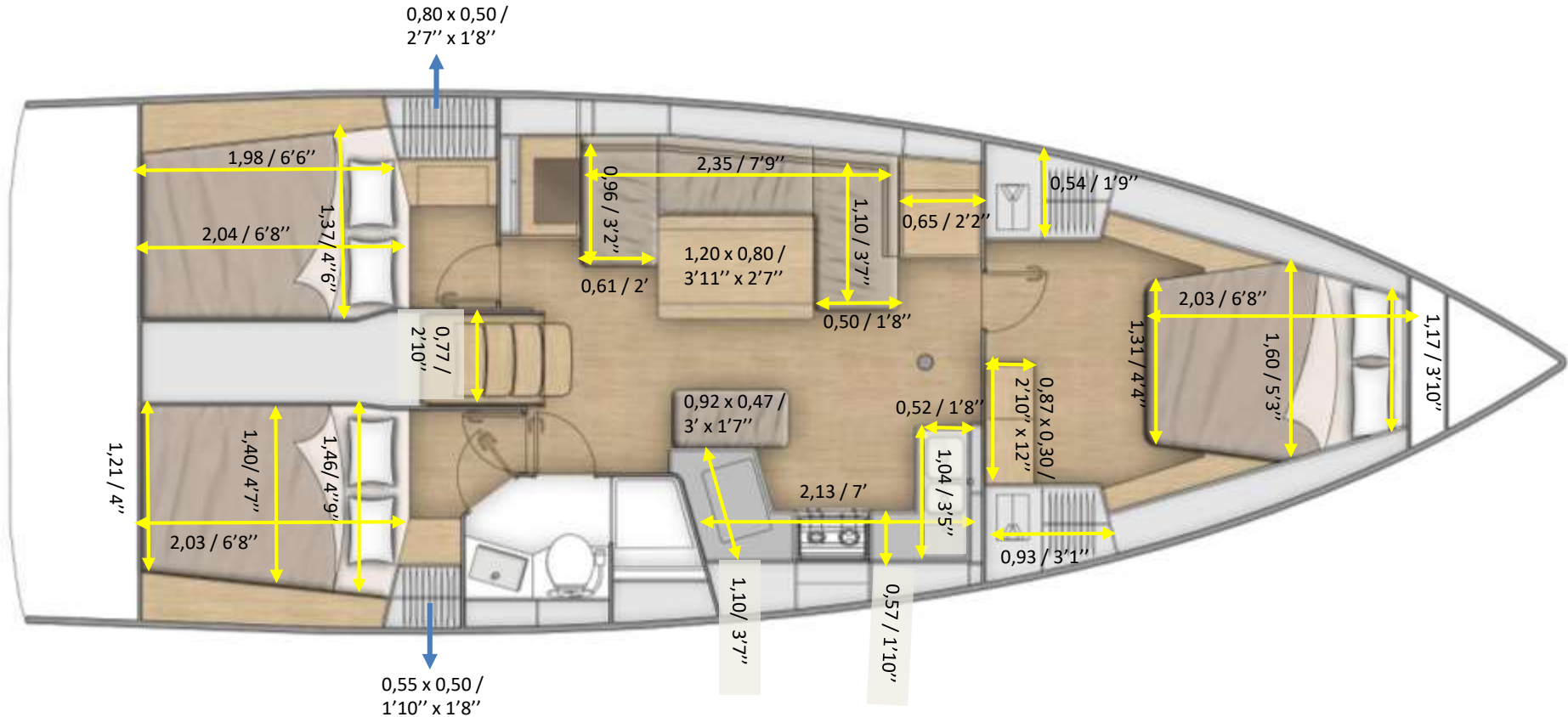
Opened width =

1,35 m / 4'5"

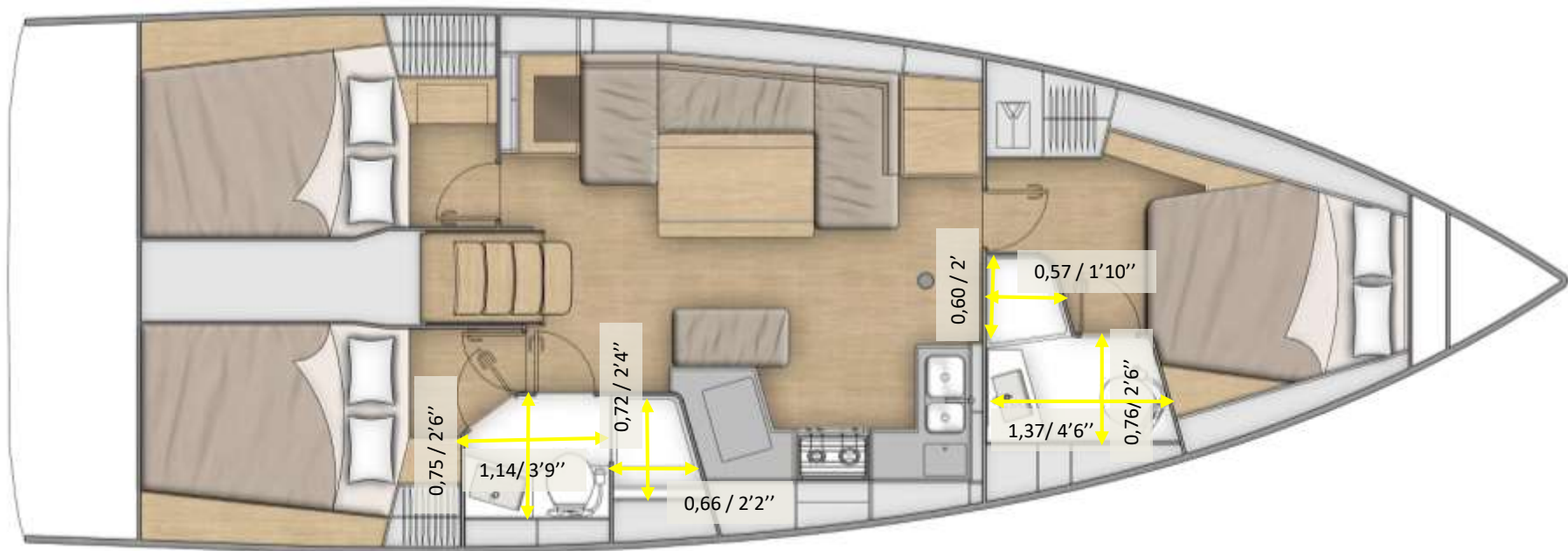


Interior dimensions & headrooms

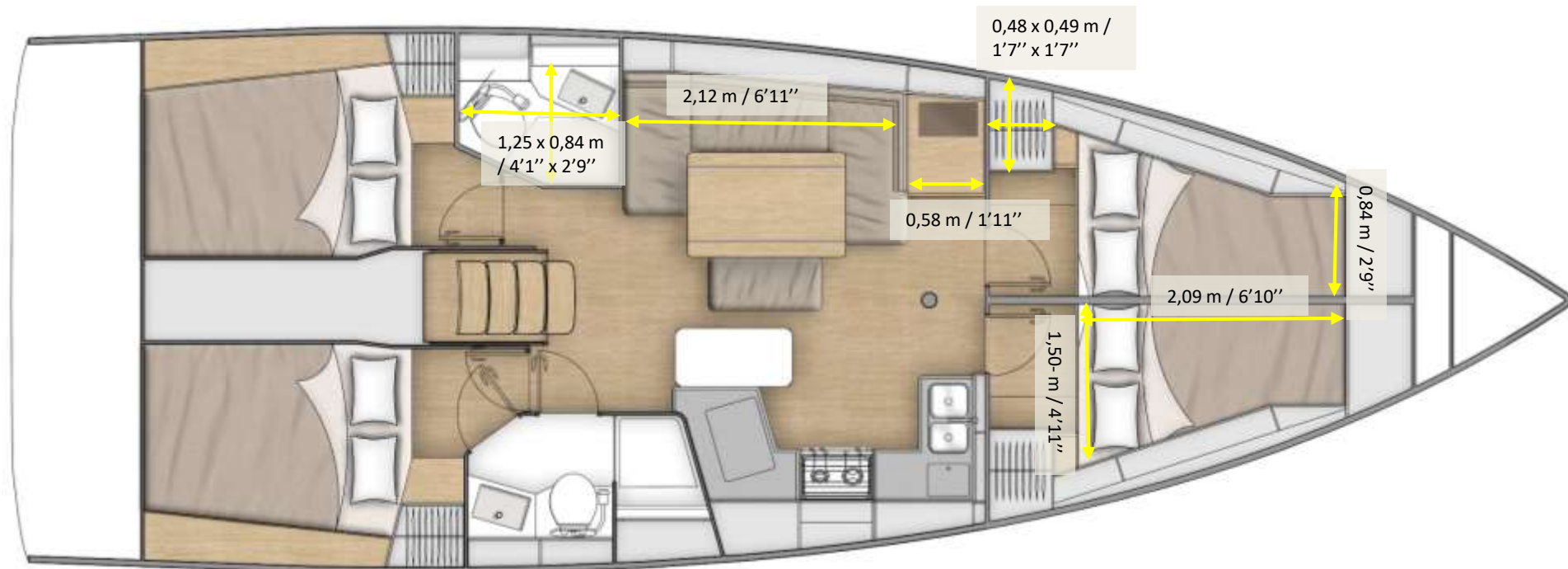
Interior dimensions



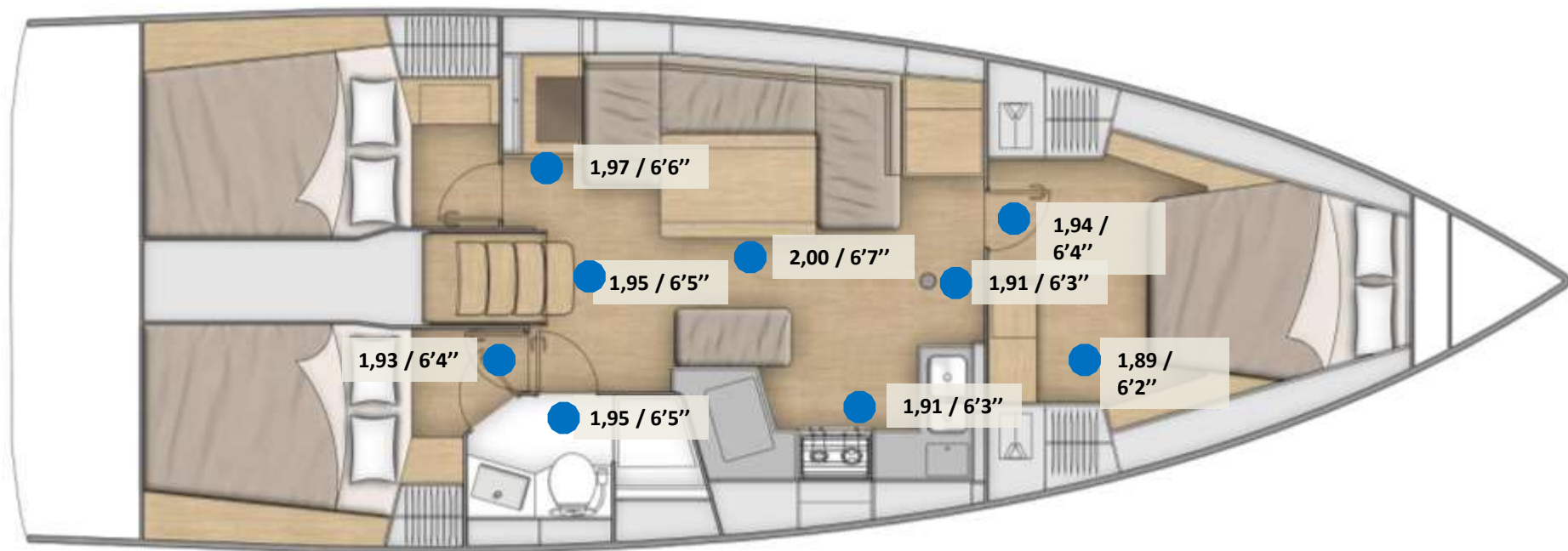
Interior dimensions: head compartments



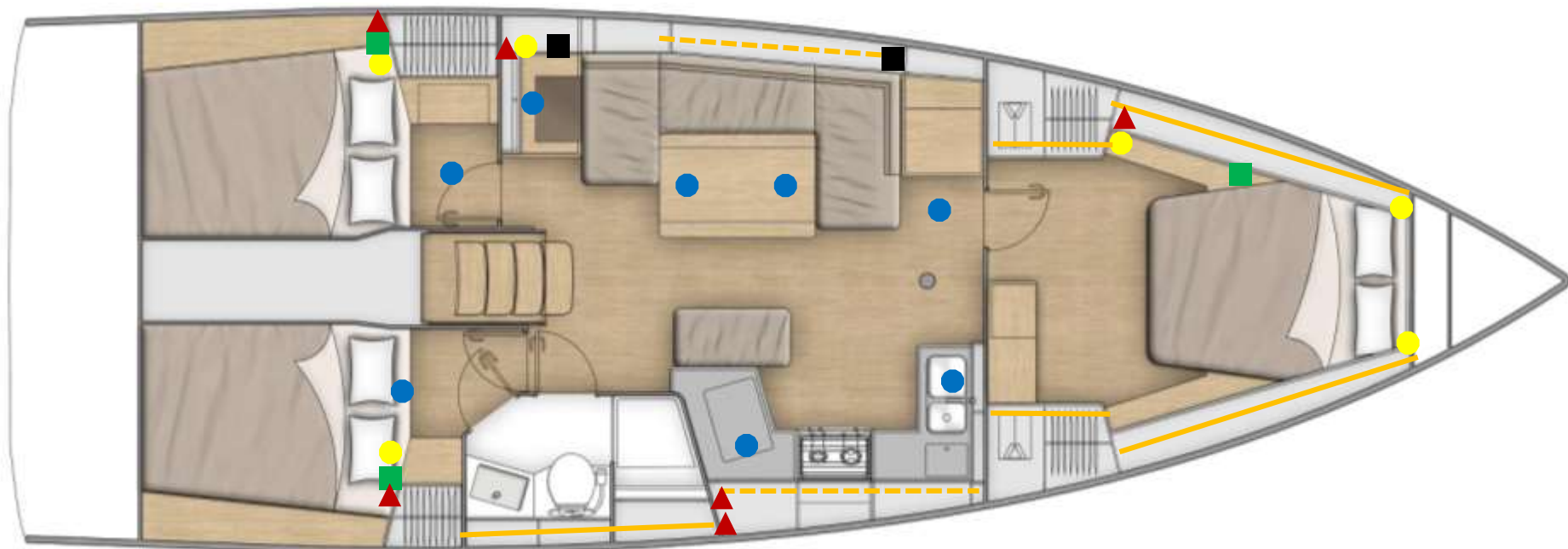
4C2H Interior dimensions



Headrooms



Electricity location

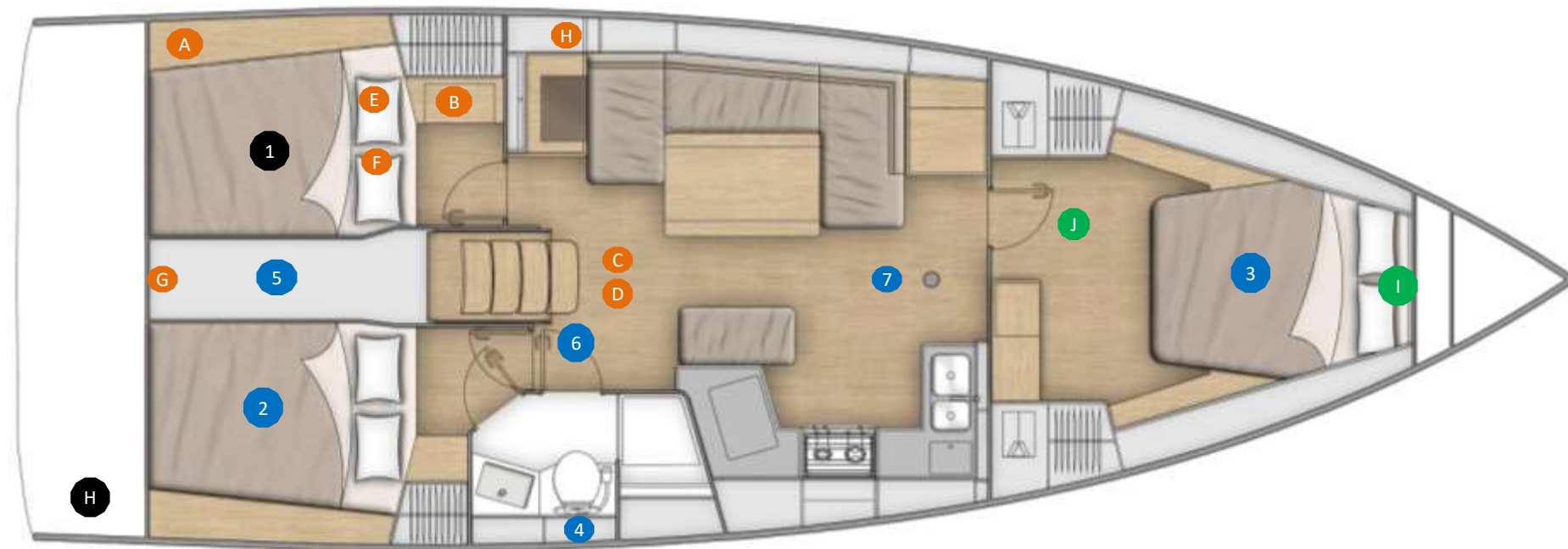


- Overhead lights
- Spotlights

- ▲ 230V socket (Trim level)
- USB socket (standard)
- USB socket (Trim level)

- LED strip (Standard)
- - - LED strip (Trim level)

Technical equipments location



1 Fuel tank 195 L / 52 US Gal - standard

2 Fresh water tank 195 L / 52 US Gal - standard

3 Fresh water tank 330 L / 87 US Gal - **option**

4 Holding tank – 80 L / 21 US Gal - standard

5 Water heater 40 L / 11 US Gal- standard

6 Plumbing board (accumulator tank- water units.....)

7 Bilge pump

A Electrical panel

B 2 000 VA 12 V – 230 V Inverter- **option**

C 2 service batteries - AGM (100 Ah), **Trim level**

D 2 additional 100 Ah service batteries **Trim level**

E 1 battery charger (60 Ah) - **Trim level**

F 1 AGM engine battery (100 Ah) -- **Trim level**

G 6,4 KVA Generator- **option**

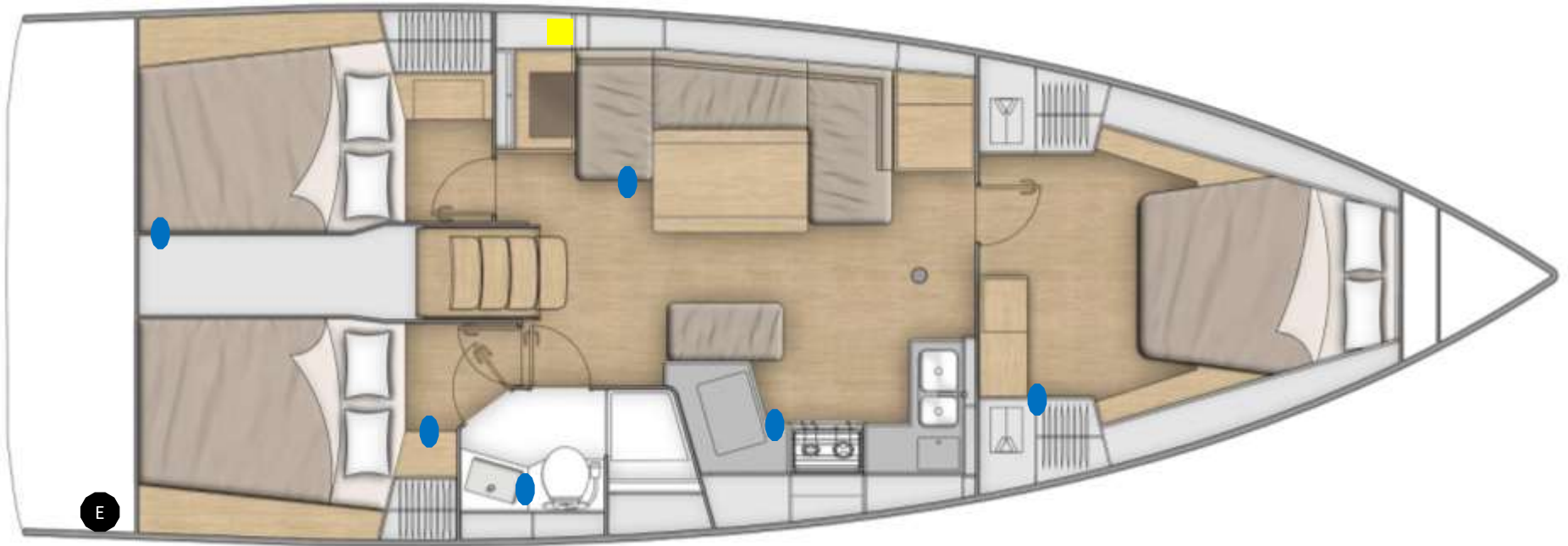
H 12V Electrical panel

I Bow thruster **option**


J Sensor **option**

H 5 500W Boiler - **option**

Heating system



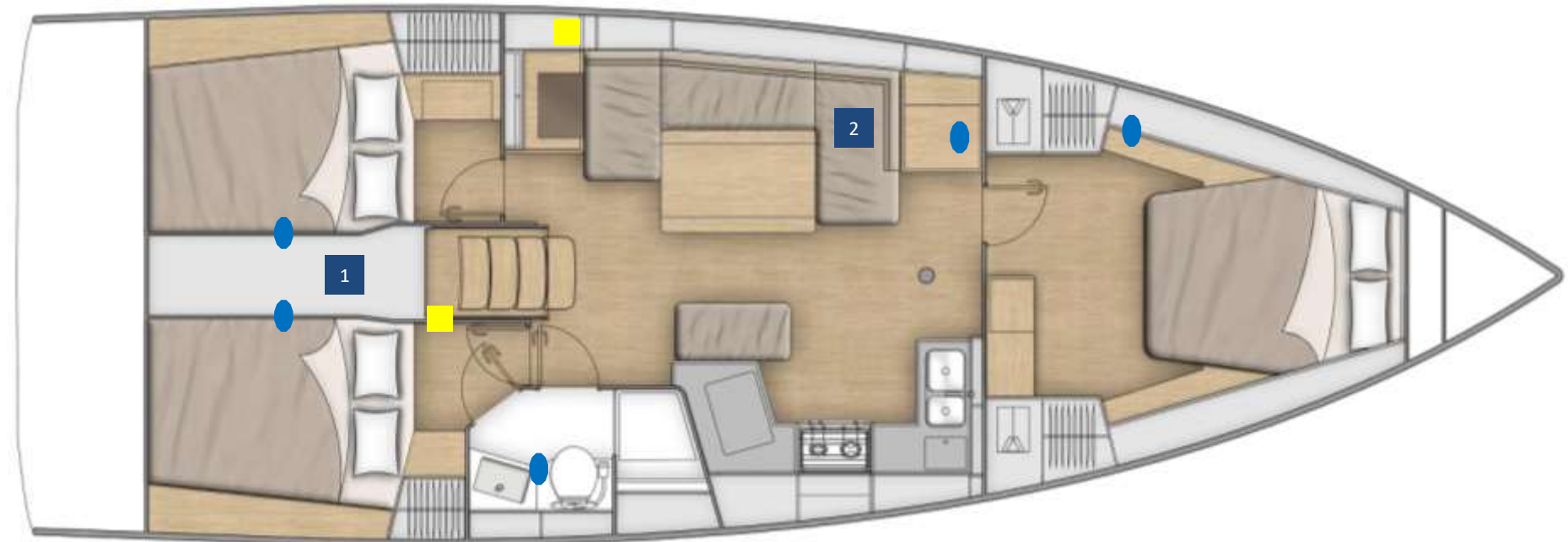
E Boiler - 5 500W - option

 Hot air outlet

 Thermostat

! Heating not compatible with air conditioning

Air conditioning



1

Air conditioning unit 8 000 BTU

2

Air conditioning unit 16 000 BTU



Air conditioning outlet



Thermostat

! Air conditioning not compatible with heating