

OCEANIS 30.1

E-BOOK



BENETEAU
AVANT-GARDE IN BOATING



1. Key Points

Oceanis 30.1

E -BOOK



The Smart Multi-programme



The Smart Multi-programme

The third of the new generation of Oceanis sailing yachts renews the entry level and has many key features that set her apart:

SMART
EASY
COMFORT
VOLUME



GENERAL SPECIFICATIONS

• L.O.A	9,53 m - 31'3"
• Hull length	8,99 m - 29'6"
• L.W.L.	8,65 m - 28'5"
• Beam (max)	2,99 m - 9'10"
• Deep draft (Cast iron)	1,88 m - 6'2"
• Deep ballast weight	973 kg - 2,144 lbs
• Shallow draft (Cast iron)	1,30 m - 4'3"
• Shallow ballast weight	1 150 kg - 2,535 lbs
• Lifting keel version (Ballast melting)	0,95 - 2,33 m - 3'1" - 7'8"
• Lifting keel version ballast weight	1 300 kg - 2,865 lbs
• Retractable keel draft	1,20 - 2,30 m - 3'11" - 7'7"
• Retractable keel weight	875 kg - 1,929 lbs
• Air draft	13,66 m - 44'10"
• Light displacement	4 120 kg - 9,100 lbs
• Fuel capacity (standard)	130 L - 34 US Gal
• Fresh water capacity (standard)	160 L - 42 US Gal
• Engine power (standard)	14 HP - 14 HP
• Engine power (Option)	21 HP - 21 HP
• Engine electric power (Option)	6 FP (9,9HP – 9,9 HP)

SAILS DIMENSIONS

• Square top mainsail	23,80 m ² - 256 sq/ft
• Furling mainsail	18,80 m ² - 202 sq/ft
• Self-tacking jib	15,70 m ² - 169 sq/ft
• Genoa (105 %)	22,10 m ² - 238 sq/ft
• Code o	34,80 m ² - 374 sq/ft
• Asymmetrical spinnaker	70,00 m ² - 753 sq/ft
• I	11,02 m - 36'2"
• J	3,87 m - 12'8"
• P	10,81 m - 35'6"
• E	3,27 m - 10'9"

ARCHITECTS / DESIGNERS

• Naval Architect	Pascal Conq
• Interior design	Nauta Design

EC CERTIFICATION

- Category B 6 people
- Category C 8 people
- Category D 10 people

The Smart Multi-programme

SMART

She is suited to everyone's programmes and all sailing grounds, with:

A tiller for sailors who love thrills and excitement or who come from dinghy sailing

Twin steering wheels for a cruiser spirit and the feel of a small yacht. This version has a completely clear cockpit, making it a wonderfully social space

4 ballasts so you can sail, whatever kind of configuration you have in your favourite sailing area: large fixed keel or shallow draught, ballasted dinghy, swing keel

Rotating mast to adapt to the constraints of inland waterways (mast development in progress)



The Smart Multi-programme



EASY

Designed to be easy to sail: a standard layout ideal for family cruises or short-handed sailing

Only 1 winch as standard

Self-tacking jib

No backstay

Choice for optional furling mast

The Smart Multi-programme



COMFORT

Sailing comfort

- The hull makes for extremely comfortable sailing since the chined construction reduces heeling.
- The absence of a backstay frees up space to stern
- The boat is easy to move about with a big cockpit, even close to the companionway, that can hold 6 people without getting in each other's way.



Living comfort on board:

- The hull provides incredible living space indoors, with generous volumes everywhere.
- The soles have been lowered on the flats, resulting in greater headroom (1.98 m in the saloon / 1.85 in the cabins)

The Smart Multi-programme



1 port winch on the coachroof as standard

Bridle on coachroof, a solution that clears the cockpit

Free-standing mast: no backstay providing improved comfort at the helm stations and a totally clear stern

Self-tacking jib track fitted on deck as standard

Twin lifting rudders for better steering reaction.

Chined hull construction above the waterline = large spaces without affecting hull performance, stiffer sails and less heel

Bowsprit (in pack) for the use of foresails

The Smart Multi-programme

Unstayed mast and swept back spreaders. Gets rid of the backstay and frees up aft movement.

Square-top mainsail as standard: larger sail area at the top = increased performance in all points of sailing. Is not suited to the optional furling mast.

Starboard manoeuvring winch H20.1 STA (in Downwind pack). Standard port winch

Genoa sheet winches H35.2STA (in Upwind or Downwind pack)

Choice of 4 ballasts: with which the boat can be adapted to all sailing grounds and everyone's programme



SMART

Easily customizable thanks to the wide choice of rigging, deck hardware and ballast. It suits everybody: beginners or sailors in search of excitement will find this boat ideal

Genoa available in the Upwind Pack. 105% overlap. As a replacement for the standard self-tacking jib

Bowsprit with integrated anchor (in Downwind Pack) for the use of foresails.

The Smart Multi-programme

The swing keel : an appendage with a number of advantages. Deep draught performance with the appeal of dinghies

- **Performance under sail**: the performance of very deep ballast in all points of sailing with limited drag (no bulb)
- **Incredible stability** without increasing the light displacement (weight identical to a deep draught fixed keel)
- **Beachable boat**: ideal for areas with a high tidal range, hull strengthened for the use of legs
- **Inaccessible sites become explorable**: in the lifted position the shallow draught gives access to shores and mooring areas with shallow waters
- **Extremely easy to work**: just press on the control button in the cockpit to raise and lower



The Smart Multi-programme

The swing keel: an appendage with a number of advantages. Deep draught performance with the appeal of dinghies

- A very safe system:

In the event of collision the cylinder pressure is released so as not to damage the keel.

A completely watertight structure: the casing is moulded along with the hull. In addition, in the raised position, the centreboard always remains outside the hull.

Several openings have been anticipated to facilitate maintenance

The centreboard can only be worked when the engine is underway: no risk of a badly positioned centreboard under sail



Tiller version

Port manoeuvring
winch H20.1STA (in
rigging pack).



Offshore pack

Genoa sheet winches
H35.2STA
(in rigging pack).

Location for liferaft +
storage locker

Cockpit table (in
trim level)

Slatted solid wood slatted
aft platform (trim level
Manual opening

Large platform as option:
Deeper, more closed
cockpit

Oceanis 30.1

E -BOOK



2 helm wheels version



2 helm wheels version



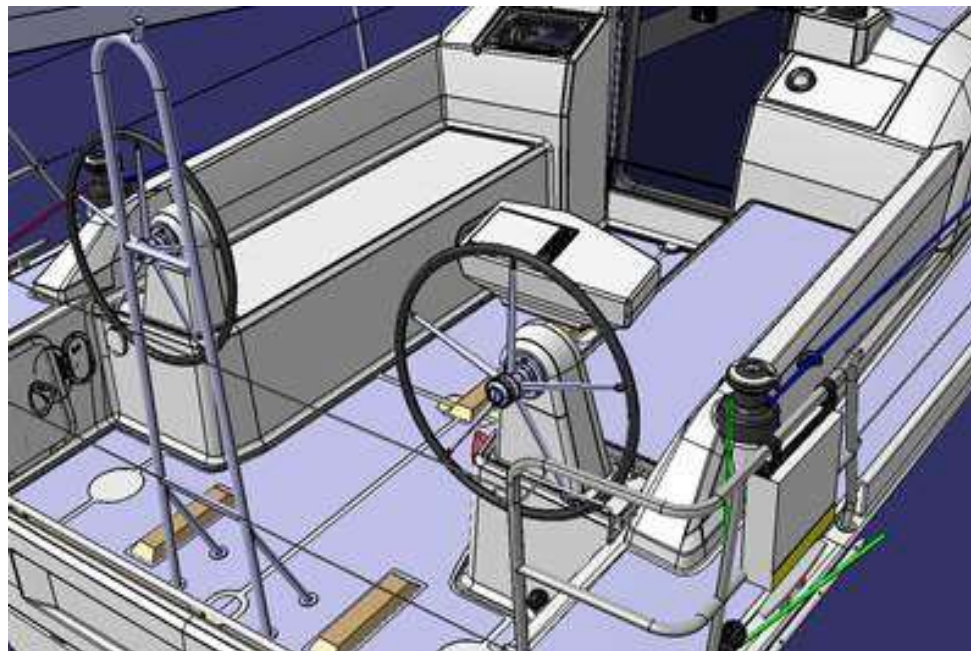
Shore power socket
(trim level)

Electronic

Offshore pack with tiller version



Offshore pack with helm wheels version
Electronic equipment on starboard helm console



Interior

One Layout version: 2C1T

2 cabins with large berths and stowage, 1 full-beam saloon with 2 good-sized bench seats and an optional chart table, 1 fitted L-shaped galley, 1 big shower room, 1 generous space for the sail locker that can be reached from the port cockpit bench.



Oceanis 30.1

Saloon

E -BOOK



Optional chart table: library with 2 shelves with fiddles, above the fold-away top (not compatible with optional air conditioning in saloon)

Gently sloping 33° companionway

Entrance to portside aft cabin

L-shaped galley, practical when heeling.

Electrical panel / VHF location

Interior bathed in light and well ventilated: deck hatch, large hull portholes, coaming glazing, etc. All the curtains and blinds are included in the trim

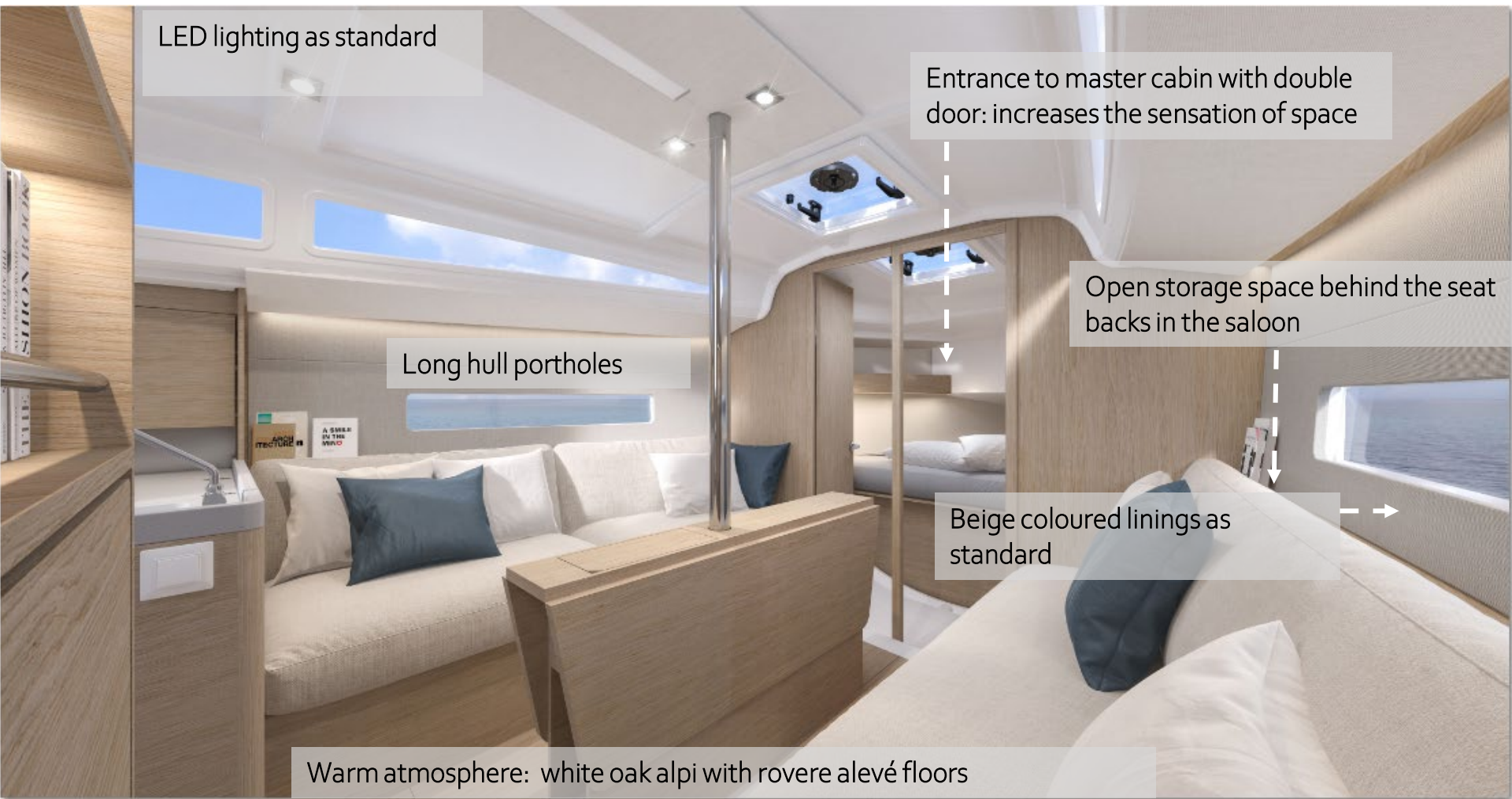
Full-beam saloon, long comfortable bench seats (1.90 m). Can be used as extra single bed

Large saloon table with 2 large fold-down flaps

Oceanis 30.1

Saloon

E -BOOK



LED lighting as standard

Entrance to master cabin with double door: increases the sensation of space

Long hull portholes

Open storage space behind the seat backs in the saloon

Beige coloured linings as standard

Warm atmosphere: white oak alpi with rovere alevé floors

Oceanis 30.1

Galley

E -BOOK



Opening porthole over the galley

1 open shelf area with fiddles on the 2 shelves.
1 closed high unit.

Storage with 2 openings on top,
75 L / 20 US Gal Icebox with
refrigerator unit as trim

1 sink. 35 x 32 cm

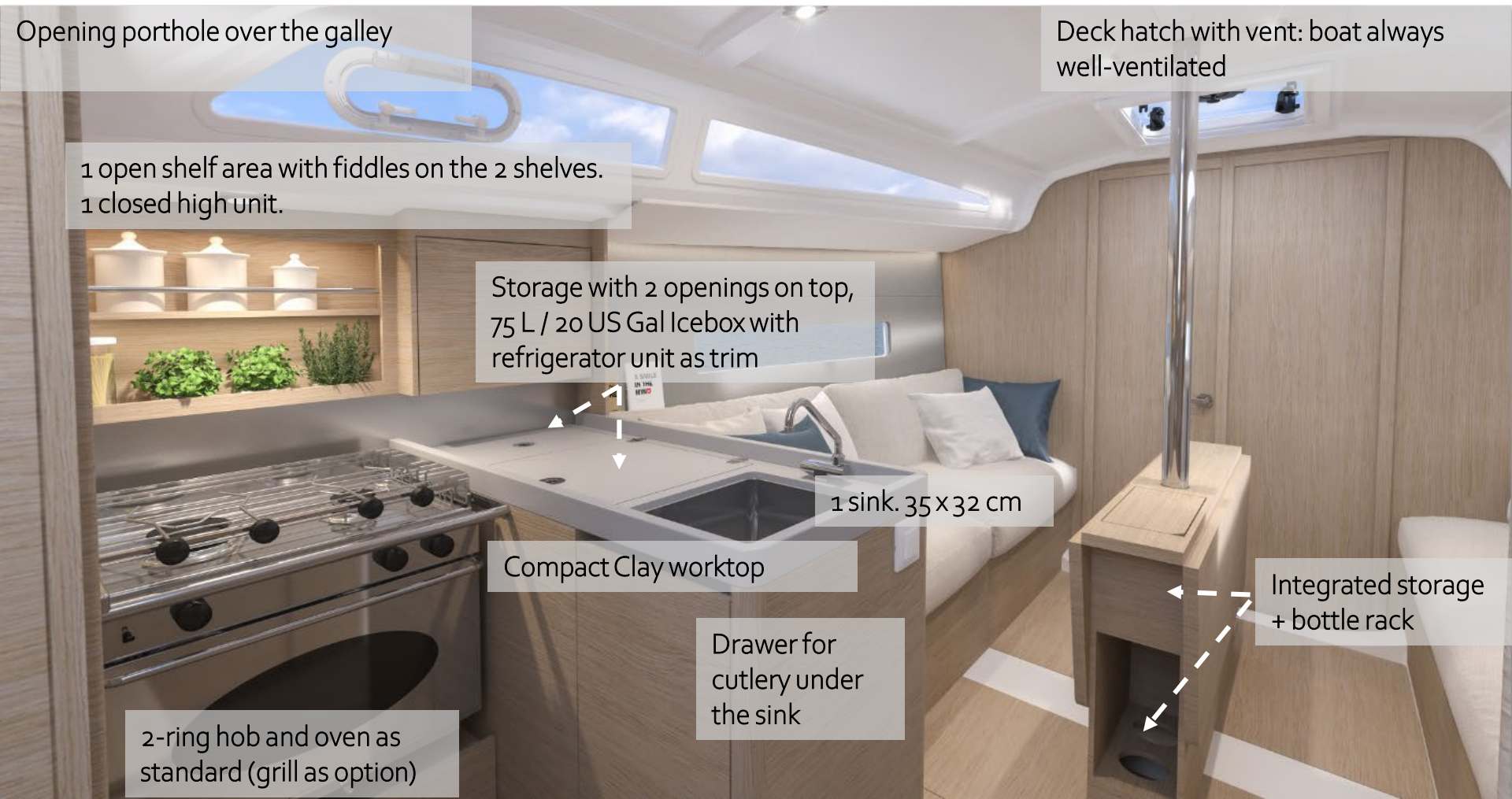
Compact Clay worktop

Drawer for
cutlery under
the sink

2-ring hob and oven as
standard (grill as option)

Deck hatch with vent: boat always
well-ventilated

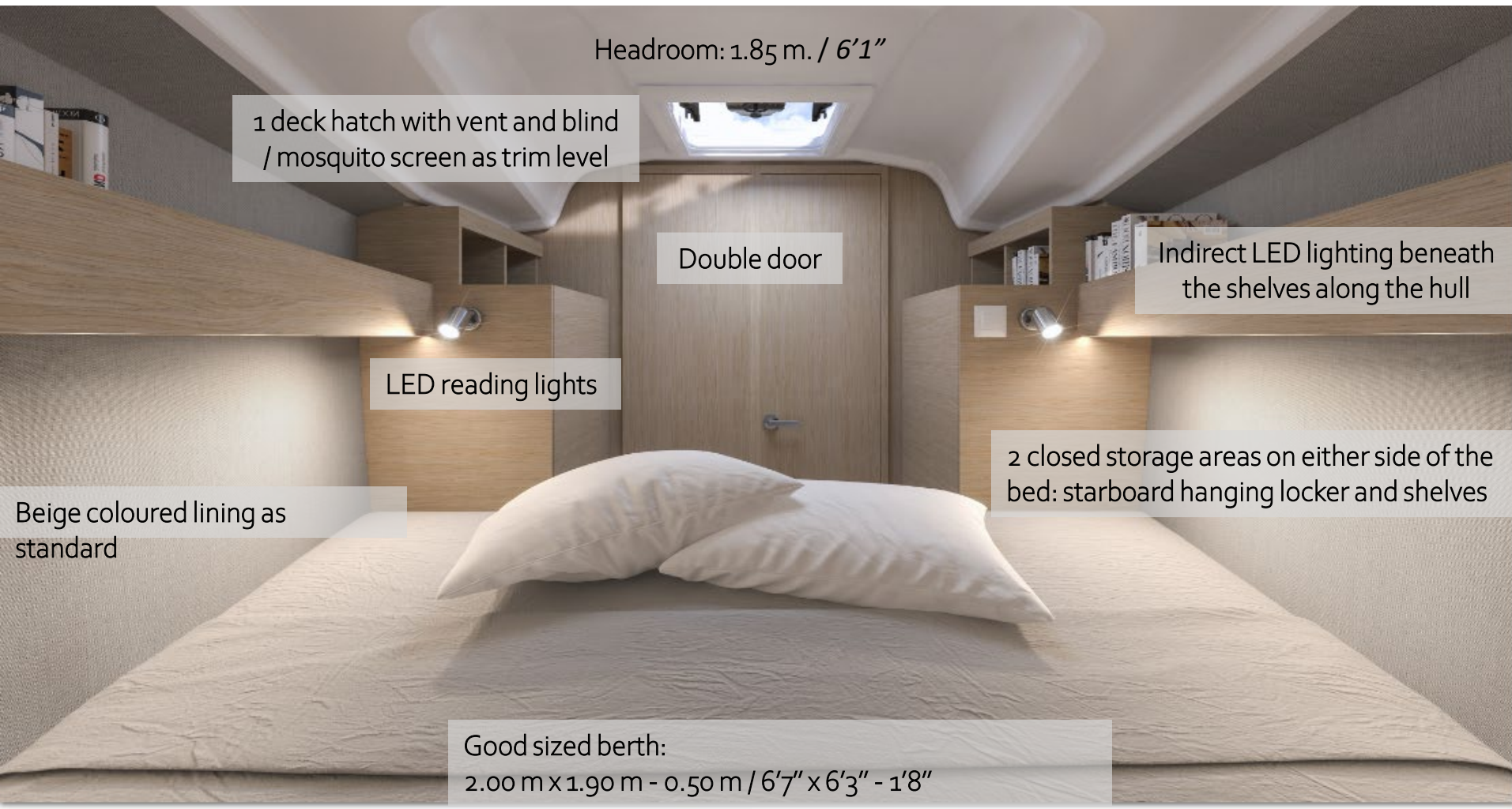
Integrated storage
+ bottle rack



Oceanis 30.1

Fore cabin

E -BOOK



Headroom: 1.85 m. / 6'1"

1 deck hatch with vent and blind
/ mosquito screen as trim level

Double door

Indirect LED lighting beneath
the shelves along the hull

LED reading lights

2 closed storage areas on either side of the
bed: starboard hanging locker and shelves

Beige coloured lining as
standard

Good sized berth:
2.00 m x 1.90 m - 0.50 m / 6'7" x 6'3" - 1'8"

Oceanis 30.1

Fore cabin

E -BOOK



Oceanis 30.1

Aft cabin

E -BOOK



Height to deck beam: 1.89 m. / 6'2"

2 opening portholes as standard:
very good ventilation

Open shelving

LED reading
light

Cupboard
with shelves

Indirect LED lighting beneath the shelves
along the hull

Beige coloured lining as
standard

Spacious double bed
(2.00 m - 1.85 m x 1.60 m - 1.35 / 6'7" - 6'1" x 5'3" - 4'5")

Oceanis 30.1

Head compartment

E -BOOK



Spacious, bright and well-ventilated
Lots of storage space
Inbuilt washbasin with mixer tap
Shower
Manual head

Headroom: 1.88 m. / 6'2"

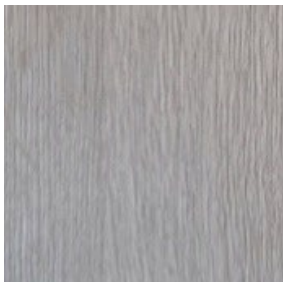
AMBIANCE

Standard

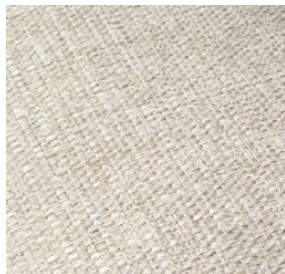
White Oak alpi



Laminated rovere
allevé floors



Interior upholstery
Néo 05

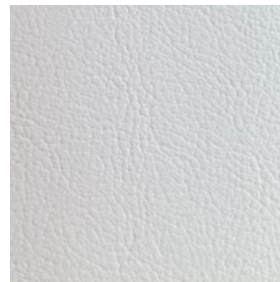


Padding upholstery
Beige

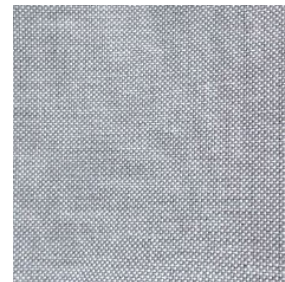


Options

Interior upholstery
PVC Marlin Weiss



Exterior upholstery
Dolce 51



Exterior protections
Cadet Grey



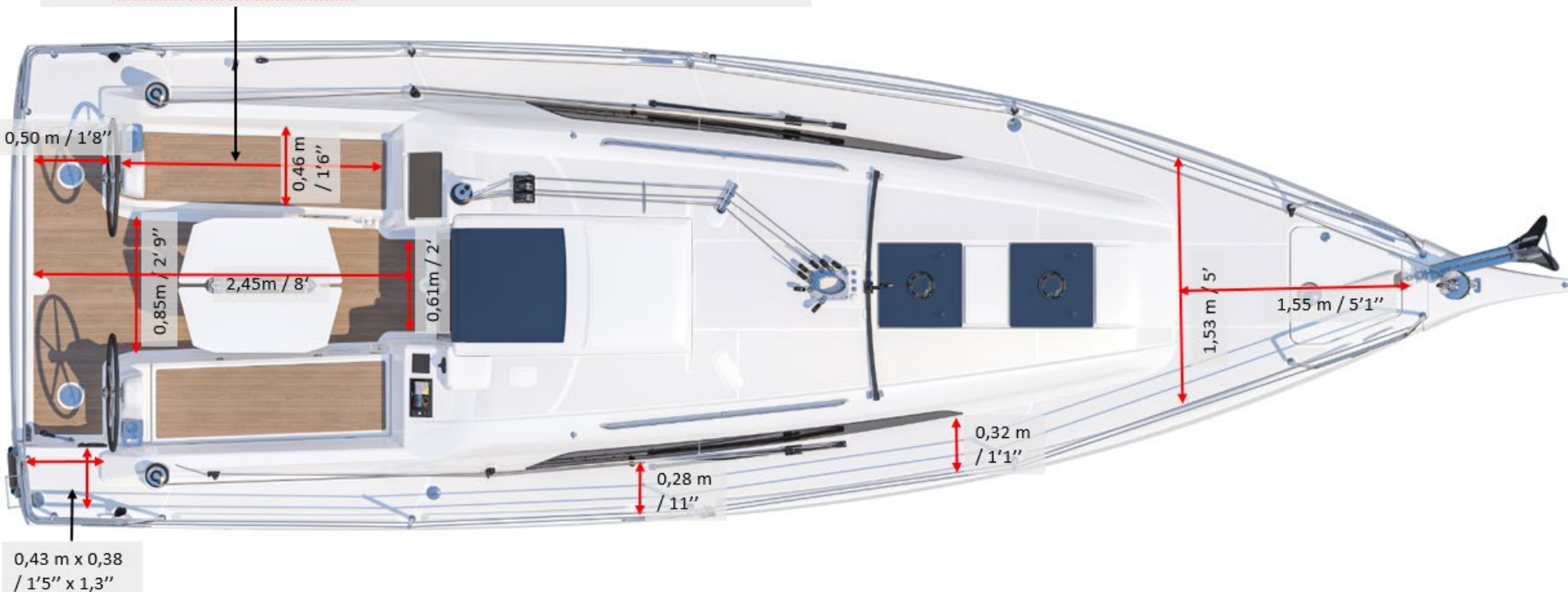
Hull
Pearl Grey / Gris perle



2. Exterior dimensions

Cockpit benches with tiller / Bancs de cockpit avec barre franche : 1,70 m / 5'7"

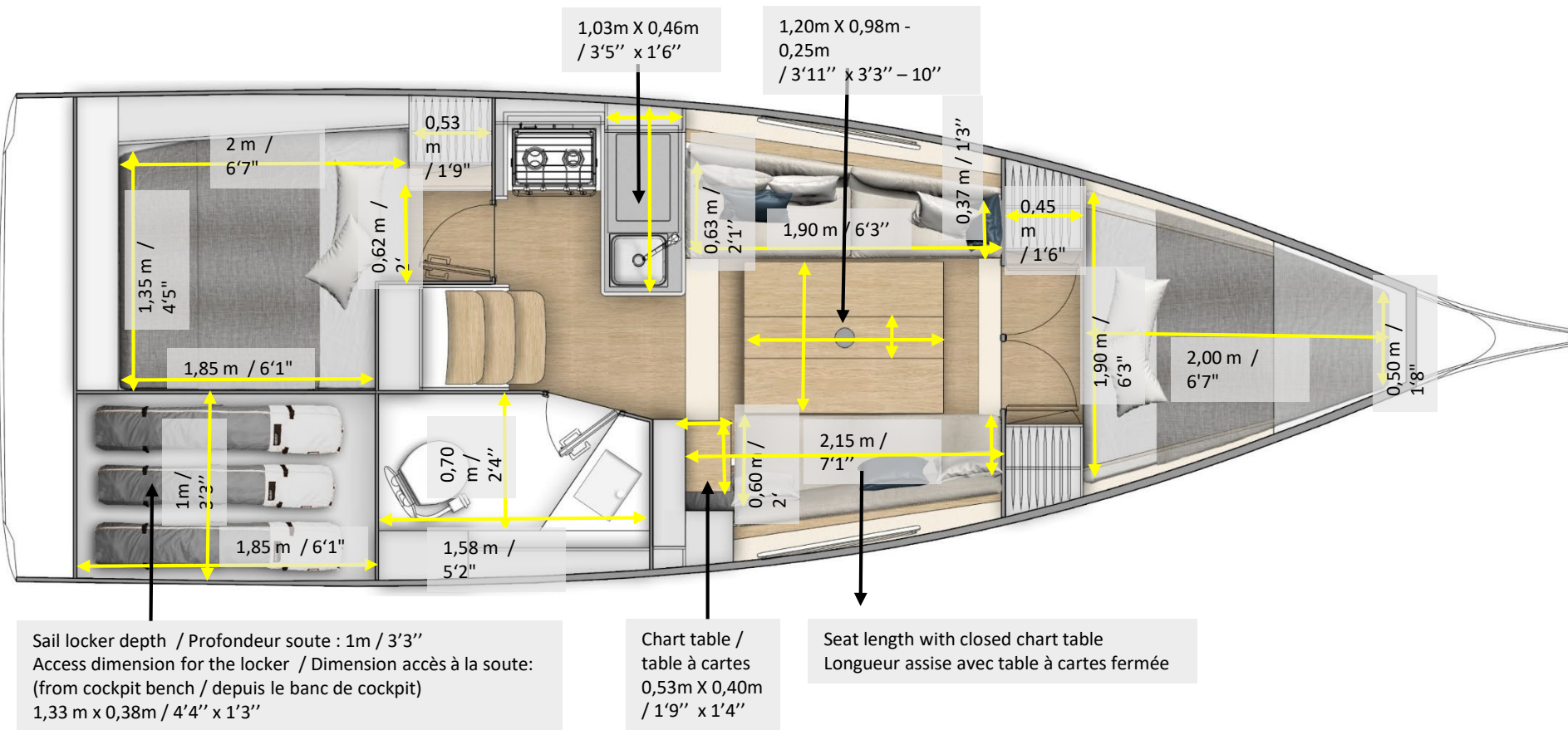
Cockpit benches with steering wheels / Bancs de cockpit avec barres à roue : 1,50 m / 4'11"



Aft platform option / plateforme arrière
1,90 m x 0,35 / 6'3" x 1'2"

Cockpit table / Table de cockpit
1,00 m x 0,81 / 3'3" x 2'8"

3. Interior dimensions



4. Location for technical equipments



- | | | | |
|---|--|---|--|
| 1 | Fuel tank 130L / 34 US Gal - standard | A | Electrical panel |
| 2 | Fresh water tank 160 L / 42 US Gal - standard | B | Inverter 700 VA 12 V - 230 V - option |
| 3 | Rigid blackwater tank - 80 L / 21 US Gal - standard | C | B 1 house battery 80 amp - 1 engine battery 50 am - standard |
| 4 | Water heater 25 L / 7 US Gal - standard | D | Battery charger 40 amp, 1 service battery 80 amp - option |
| 5 | Plumbing board (expansion tank - water collection generator, etc.) | E | Water heater - option |