

Oceanis Yacht 54

E-BOOK



BENETEAU
AVANT-GARDE IN BOATING

Key Points

Provisional Specifications

GENERAL SPECIFICATIONS

• L.O.A	17,12 m	56'2"
• Hull length	15,98m	52'5"
• L.W.L.	15,40m	50'6"
• Beam	5,00m	16'5"
• Standard draft (T-keel)	2,50m	8'2"
• Standard ballast weight (Cast iron)	4 500kg	9,918 lbs
• Shallow draft	2,00 m	7'3"
• Shallow draft weight (Cast iron)	5 130kg	11,307 lbs
• Air draft (excluding antennae)	24,00 m	79'
• Performance air draft (excluding antennae)	25,80 m	85'
• Light displacement	16 600 kg	36,586 lbs
• Fuel capacity (standard)	400L	106 US Gal
• Fresh water capacity (standard)	720L	190 US Gal
• Engine power:		
- Sail drive (standard)	80 HP	
- Propeller shaft (Option)	110 HP	

EC CERTIFICATION

• Category A -	10 people
• Category B -	12 people
• Category C -	14 people

ARCHITECTS / DESIGNERS

• Naval Architect:	Biscontini Yacht Design
• Outside & interior design:	Lorenzo Argento

SAILS DIMENSIONS - furling mast

• Mainsail	63,00 m ² / 678 sq/ft
• Self tacking jib	51,00 m ² / 549 sq/ft
• Furling genoa (105 %)	65,00 m ² / 700 sq/ft
• Code o	150,00 m ² / 1,614 sq/ft
• Asymmetric spinnaker	210,00 m ² / 2,260 sq/ft
• I	19,90 m / 65'3"
• J	6,80 m / 22'4"
• P	20,00 m / 65'7"
• E	6,80 m / 22'4"

SAILS DIMENSIONS - classic mast (+ 1,80 m / 5'11")

• Performance mainsail	83,00 m ² / 894 sq/ft
• Self tacking jib	56,00 m ² / 603 sq/ft
• Furling genoa (105 %)	70,00 m ² / 754 sq/ft
• Code o	166,00 m ² / 1,787 sq/ft
• Asymmetric spinnaker	260,00 m ² / 2,800 sq/ft
• I	21,75 m / 75'2"
• J	6,80 m / 22'4"
• P	22,00 m / 75'6"
• E	6,80 m / 22'4"

Oceanis Yacht 54

E -BOOK



When Cruising Means Elegance



When Cruising Means Elegance

ELEGANCE

Her distinctive profile draws the eye and her interior is an immediate success.

LUXURY CRUISER

We have done our utmost to make you comfortable: a cockpit in which to lay back in relax, a spacious helm station, a really comfortable saloon, a spacious chart table with seat you can rest on, a galley with lots of storage space and top quality appliances.

CENTRAL COCKPIT REVISITED

Exemplary circulation: safe easy movement with the comfortable area not just limited to the cockpit and perfect access to the gangways aft of the helm stations for the skipper and crew members. The mainsail arch improves comfort on board, with an open cockpit free of all rigging.

HIGH PERFORMANCE HULL

The beautiful First Yacht 53 hull makes sailing a pleasure in all weather and lively even in light air. Her straight bow takes on little water forming a fine spray and she has twin rudders for perfect hull control making her a joy to helm.

TOP QUALITY RIGGING AND DECK FITTINGS

To make sailing a true pleasure, every detail of the in-mast furling version and the standard Performance mast shows that the emphasis has been placed on quality and reliability.

THE LATEST INNOVATIONS FOR EASY SAILING

Seanapps: the connected boat

Ship Control: user-friendly centralisation of all the boats electronic controls.

seanapps
CONNECT YOUR BOAT FREE YOUR MIND



Oceanis Yacht 54

E -BOOK



When Cruising Means Elegance

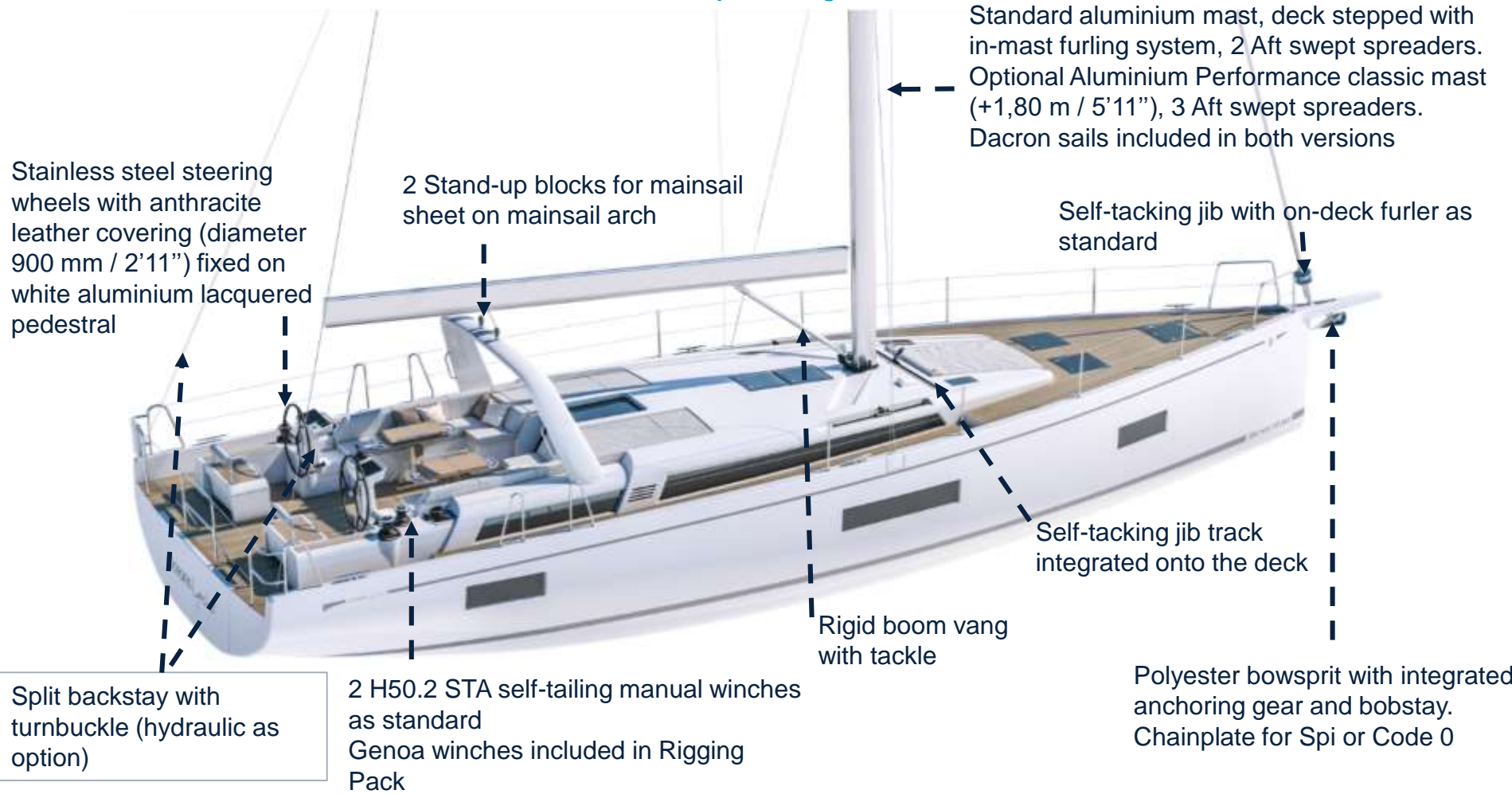


When Cruising Means Elegance

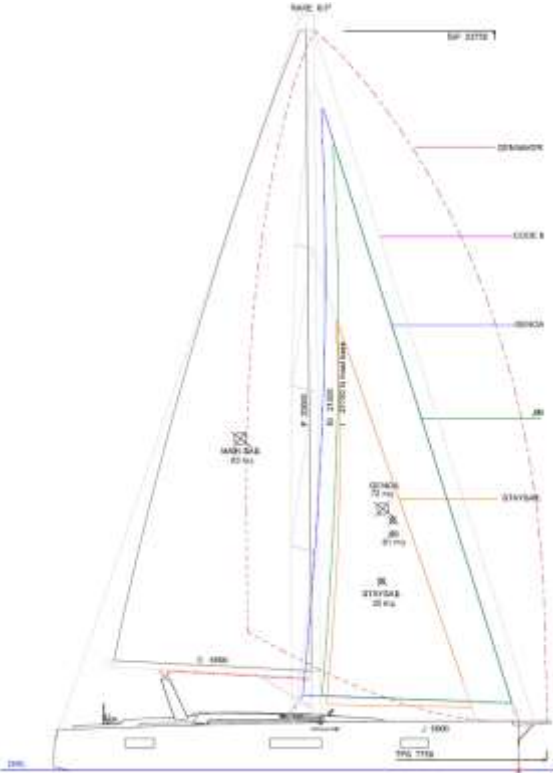


Longitudinal dinghy storage = easy manoeuvres . Lifting system available as option

Easy sailing



Many options for enhanced performance



Performance version with classic aluminium mast:

- +1,80 m / 5'11" compared with the in-mast furling system, three pairs of swept back spreaders.
- A considerably larger sail area: +32% mainsail area

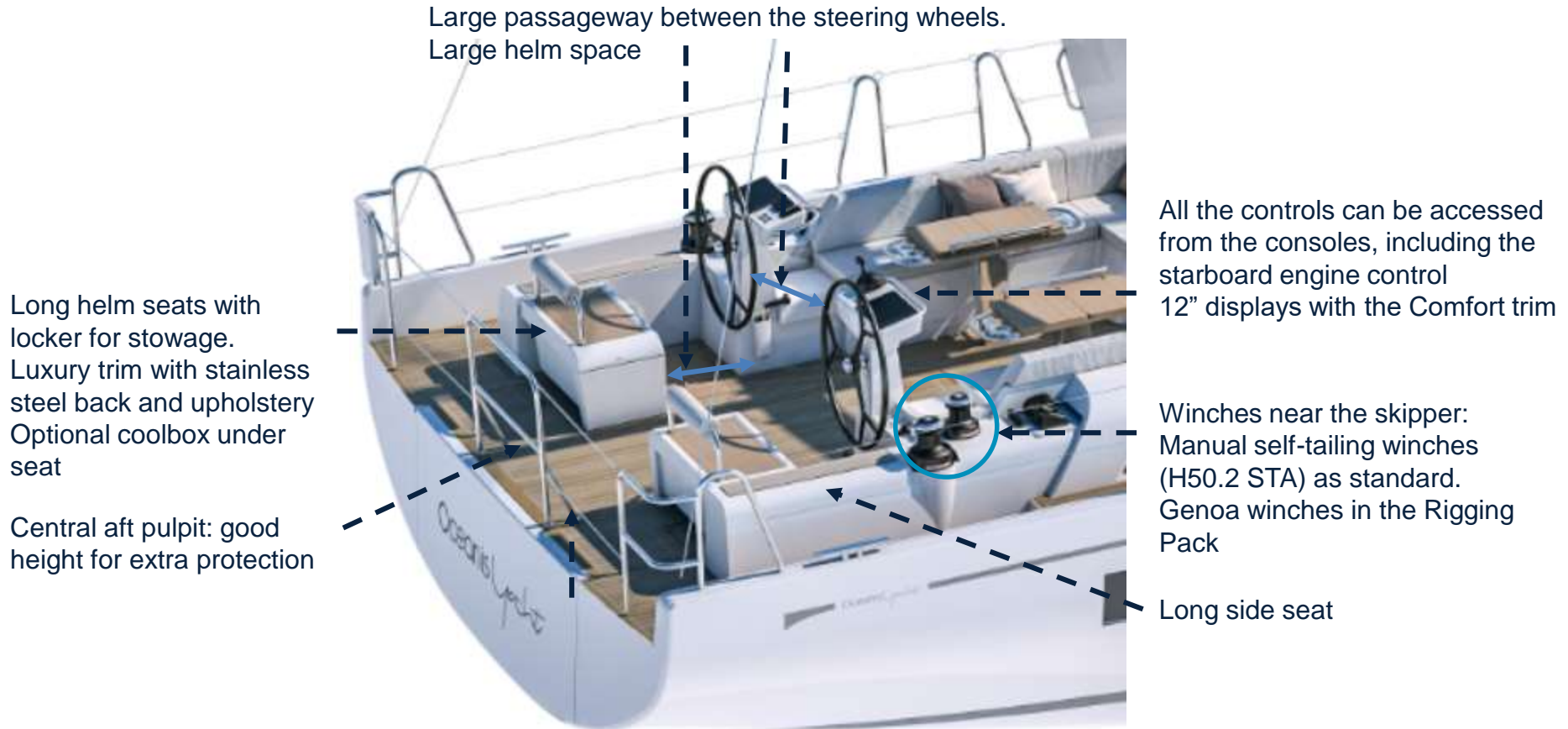
Hydranet sails: as a substitute for standard Dacron sails

- Color: white

Rigging packs that can be chosen to match your programme.

	DOWNWIND	UPWIND	DOWNWIND + UPWIND
• German System (Two-way mainsheet at the helm station + 2 additional clutches to starboard and 2 to port)	■	■	■
• 2 Genoa winches (H60.2STA) + 1 Winch handle	■	■	■
• Asymmetrical spinnaker rigging / Code 0	■		■
• Dacron genoa on furler		■	■
• Genoa sheet track on the coachroof + Genoa sheets		■	■

Comfortable ergonomic helm stations



Electronic packs: Essential equipments are integrated in trim level

PACK COASTAL

CONSOLE PORT
 Axiom Pro 12 12" Multifunction 800 hybridtouch display
 Autopilot control integrated - includes
 Raymarine Silver or LightHouse OS cartography

CONSOLE STARBOARD
 Axiom Pro 12 12" display

CHART TABLE
 p700 Colour
 Autopilot
 Control Head

Ray90 Radio VHF
 black box with DSC
 and AIS receiver

DE120
 Speed
 Depth/Temp
 Transducer

Wind transducer and
 ITC3 interface box

CV-1 9 axis compass sensor
 with built-in rate gyro -
 AIS-400 autopilot control
 unit - Radar Reference



Coastal Pack is included in Comfort trim level

PACK OFFSHORE

CONSOLE PORT
 Axiom Pro 12 12" Multifunction 800 hybridtouch display
 Autopilot control integrated - includes
 Raymarine Silver or LightHouse OS cartography

9700 Colour Instrument

CONSOLE STARBOARD
 Axiom Pro 12 12" display

CHART TABLE
 p700 Colour
 Autopilot
 Control Head

Ray90 Radio VHF
 black box with DSC

AIS700 class B AIS transceiver
 with built-in antenna splitter

Ray 90
 Wireless VHF
 Handset

DE120
 Speed
 Depth/Temp
 Transducer

Wind transducer and
 ITC3 interface box

CV-1 9 axis compass sensor
 with built-in rate gyro -
 AIS-400 autopilot control
 unit - Radar Reference

1500 wireless
 Remote control


PACK OFFSHORE (CONTINUED)



Offshore Pack is included in Luxe trim level


OPTIONAL RADAR

Quantum 2 Display antenna using
 CHRF Pulse Compression
 technology and Doppler clutter
 reduction technology



OPTIONAL AUGMENTED REALITY

This function allows you to display
 further information thanks to navigation
 elements directly available on the
 video page of the Axiom Pro Display



Separate options to narrow down choices

A Luxury Yacht cockpit: attractive outside upholstery offer

Optional Dolce 51 upholstery to change the complete outside upholstery offer included in **Luxe Trim level**

Cockpit tables with electrical legs.

Luxe trim level

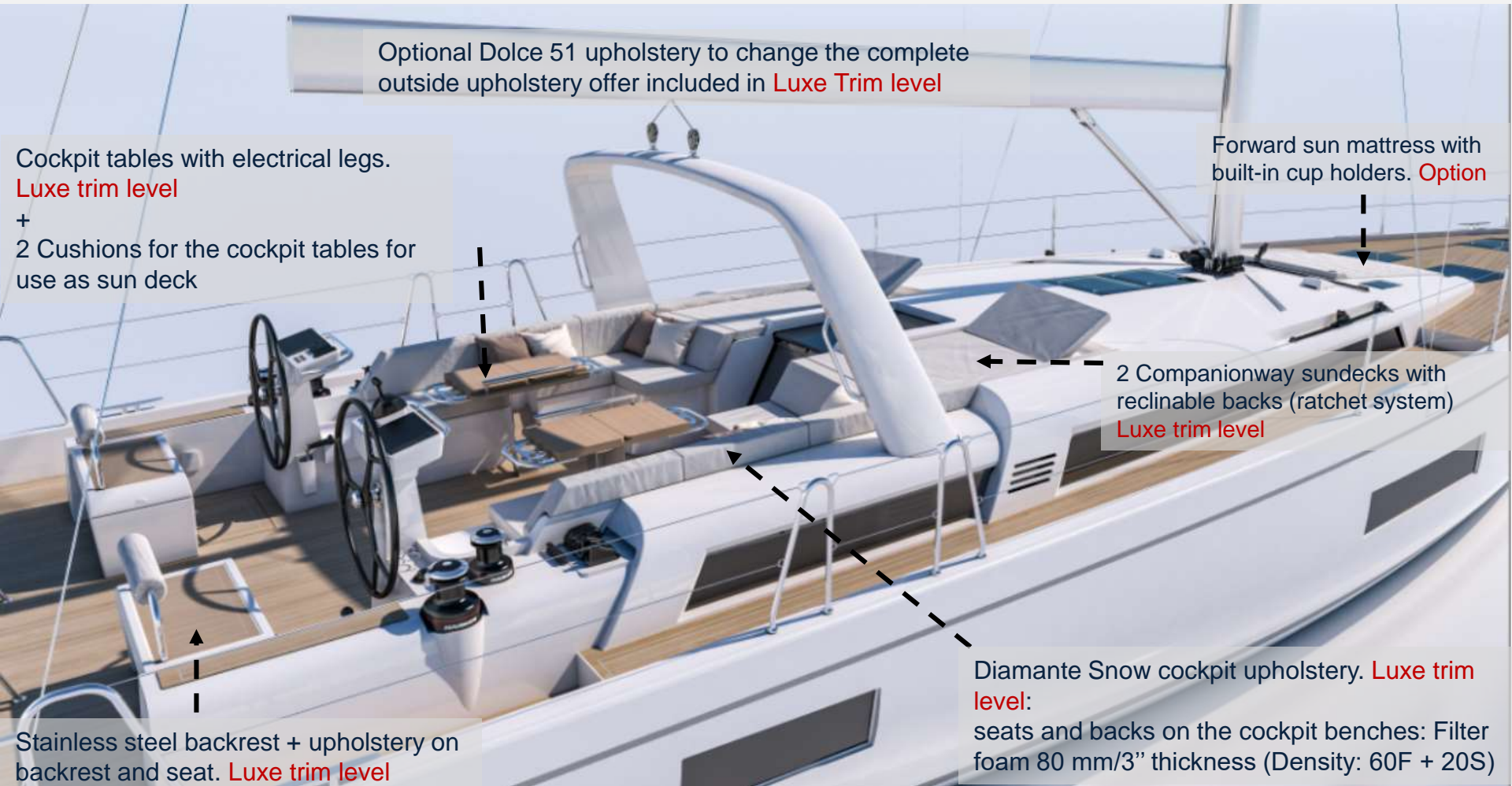
+
2 Cushions for the cockpit tables for use as sun deck

Forward sun mattress with built-in cup holders. **Option**

2 Companionway sundecks with reclinable backs (ratchet system)
Luxe trim level

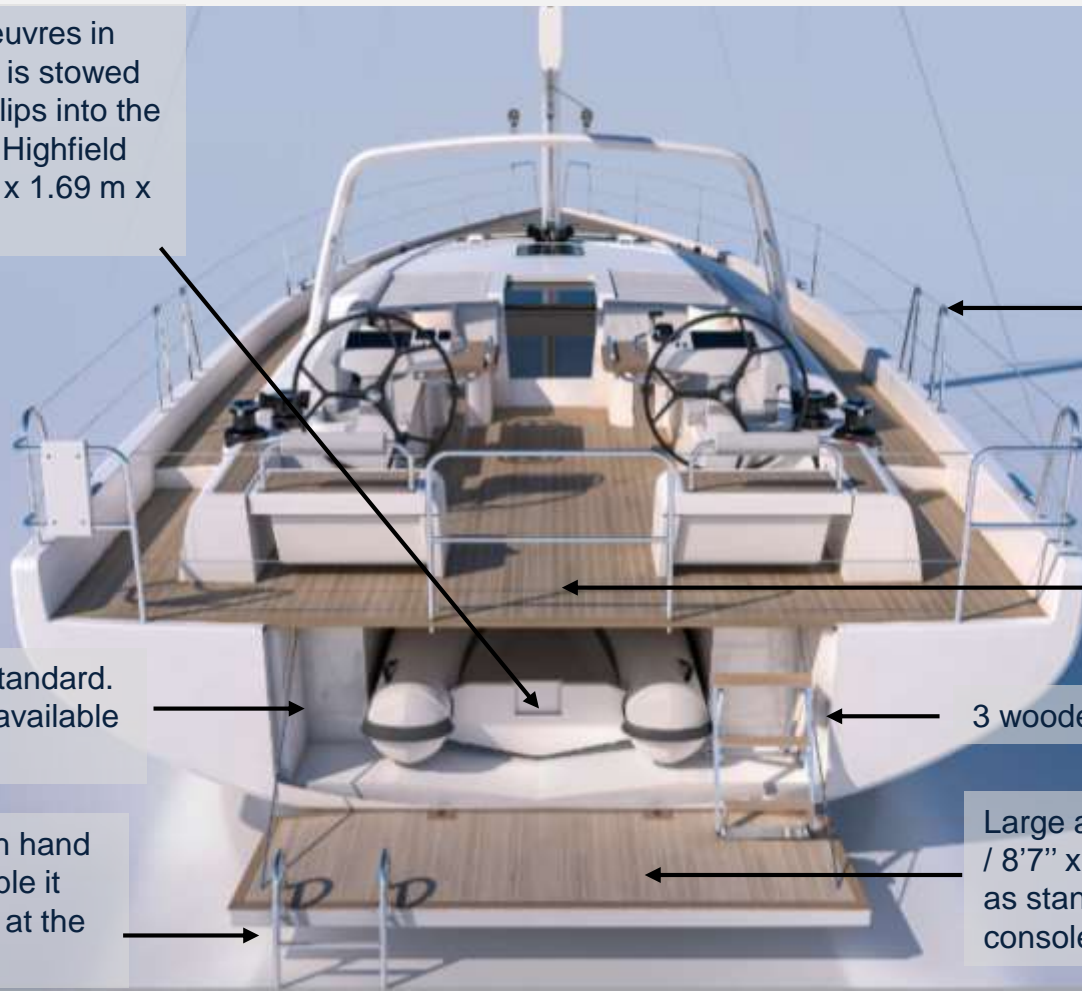
Diamante Snow cockpit upholstery. **Luxe trim level:**
seats and backs on the cockpit benches: Filter foam 80 mm/3" thickness (Density: 60F + 20S)

Stainless steel backrest + upholstery on backrest and seat. **Luxe trim level**



A longitudinal tender garage: easy

Designed for simple manoeuvres in complete safety, the tender is stowed away longitudinally. It just slips into the garage. Sizes studies for a Highfield UL240 type tender (2.48 m x 1.69 m x 0.80 m / 8'2" x 5'7" x 2'7")



Gangway doors as standard

Access to the garage from the cockpit

Hot/cold water shower as standard. An extra cockpit shower is available as option

3 wooden steps to enter the cockpit

Large swim ladder with high hand rails for easy use. Removable it has its own storage space at the back of the cockpit

Large aft platform: 2.61 m x 0.93 m / 8'7" x 3'1". Electrically-operated as standard from the helm station consoles

Central cockpit revisited

All the advantages of the central cockpit, eliminating the inconvenience of different levels.

Comfort during manoeuvres: all the points of access are ergonomically designed, flowing movement, and the cockpit is free of running rigging



Flawless circulation

Wide obstacle-free gangways for safe easy movement

Beautiful relaxation space on the foredeck with a forward sun pad option.
Very comfortable with in-built drinks holder
Available in Diamante Snow or Dolce 51

Fully flush foredeck with in-built hatches

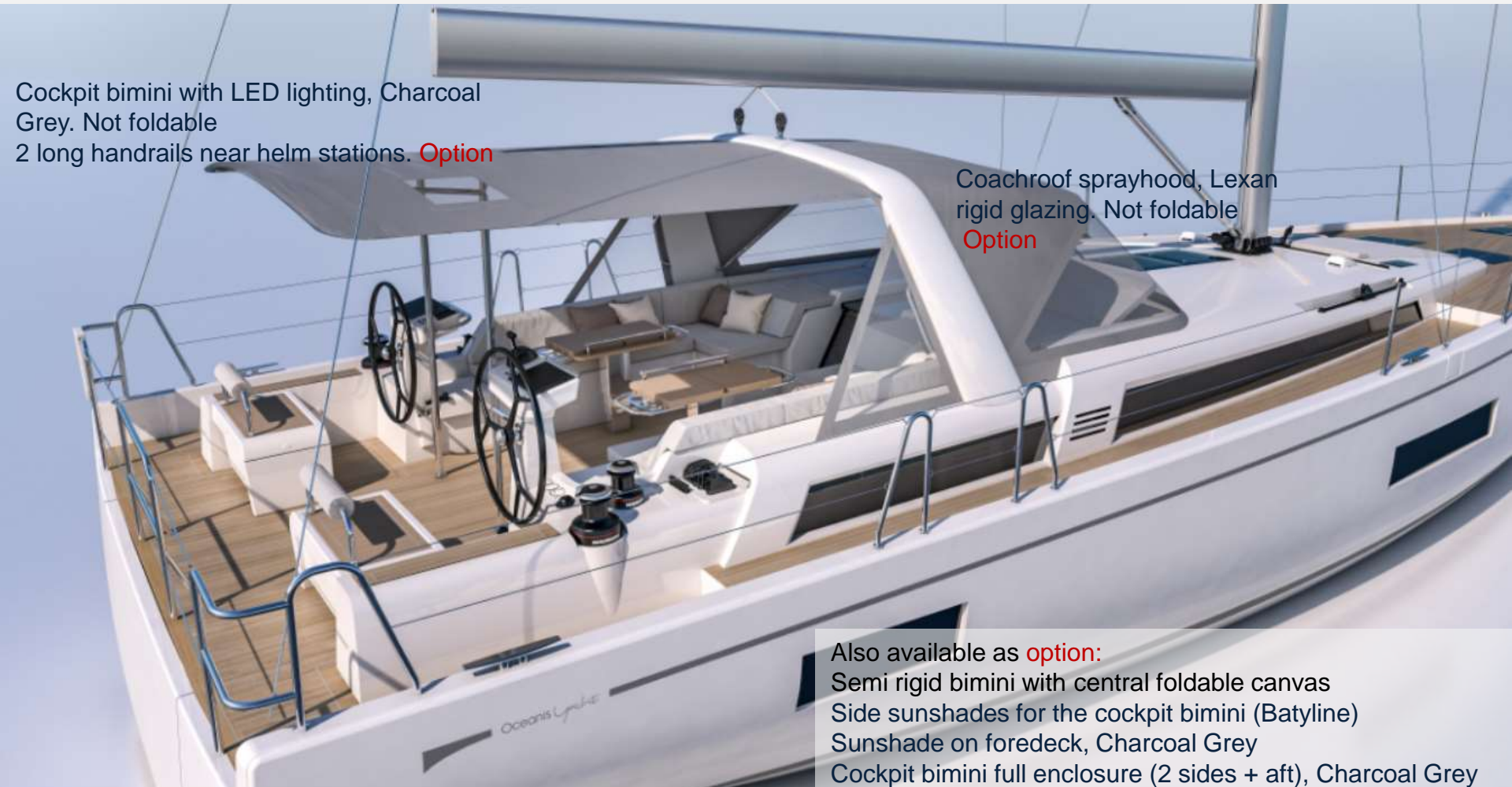


Qualitative exterior protections

Cockpit bimini with LED lighting, Charcoal Grey. Not foldable
2 long handrails near helm stations. **Option**

Coachroof sprayhood, Lexan rigid glazing. Not foldable
Option

Also available as **option**:
Semi rigid bimini with central foldable canvas
Side sunshades for the cockpit bimini (Batyline)
Sunshade on foredeck, Charcoal Grey
Cockpit bimini full enclosure (2 sides + aft), Charcoal Grey



The latest innovations for Easy Sailing



SEANAPPS: connected boat as standard

"SEANAPPS" smart technology:

For monitoring the boat's status and receiving alerts as well as maintenance advice via the associated mobile application.

The type of information collected varies according to the boat's configuration: safety indicators (GPS position, battery status, bilge level, engine condition), navigation data (distance covered, speeds, depth), and comfort information (tank level, cabin temperature and humidity).

Many possible applications dedicated to dealers and an opportunity to develop a new approach to customer relations

seanapps

CONNECT YOUR BOAT FREE YOUR MIND



sea@apps

WHAT IS sea@apps ?

It is a boat equipped with a telematics package



Equipped as standard on new boats

Included in the prices of the boats

or

Retrofitted on used boats

available via the Spare Parts channel

Compatibility / All types of boats

All generations

06

sea@apps



First year = free
Annual renewal 180€ excl. vat



... CONNECTED TO YOUR CLIENTS

- | Remote monitoring
- | Alerts & reminders
- | News feed
- | Navigation book
- | Maintenance book
- | Manuals & owner files



... AND TO YOUR BUSINESS

Fleet view (manager)

- | Dashboard (maintenance, handovers)
- | Real time monitoring
- | Ticketing tool for the workshop

Operational view

- | Technical logbook of each boat
- | Task allocation to the technical team
- | Intervention report

Annual license
Mandatory from January 2022 (SAAS)



The latest innovations for Easy Sailing



A USEFUL AND USER-FRIENDLY INTERFACE TO HAVE ALL THE KEY FEATURES OF THE BOAT AT YOUR FINGERTIPS

Ship Control can be accessed via the boat's navigation screen or a tablet connected to the boat's Wi-Fi router and it unites all the functions onboard on the same web interface. Completely secure, this system is based on multiplexing and has been present on racing boats for a number of years.

COMPREHENSIVE AND USER-FRIENDLY

The main electronic functions on board are displayed as pictograms on the home screen. A quick tap on the icon you want and you can manage the lights, air-conditioning, Hi-Fi, electrical sources (AC), bilge pumps or a page dedicated to navigation. It also controls the battery and fluid levels, and gives an overview of the engine gauges. With instant and ergonomic access to this data, you feel considerably more in control of your boat.

A CLEAR ADVANTAGE

Ship Control interface is a built-in onboard computer. It assists with navigation and life on board. Since you can connect several tablets to this interface, each member of the crew can access all the available functions from wherever he is on the boat.



Luxury Cruiser



The yacht has instant appeal, with a stylish interior using noble materials.

By day it is bathed in natural light and in the evening, it is lit by indirect lighting.

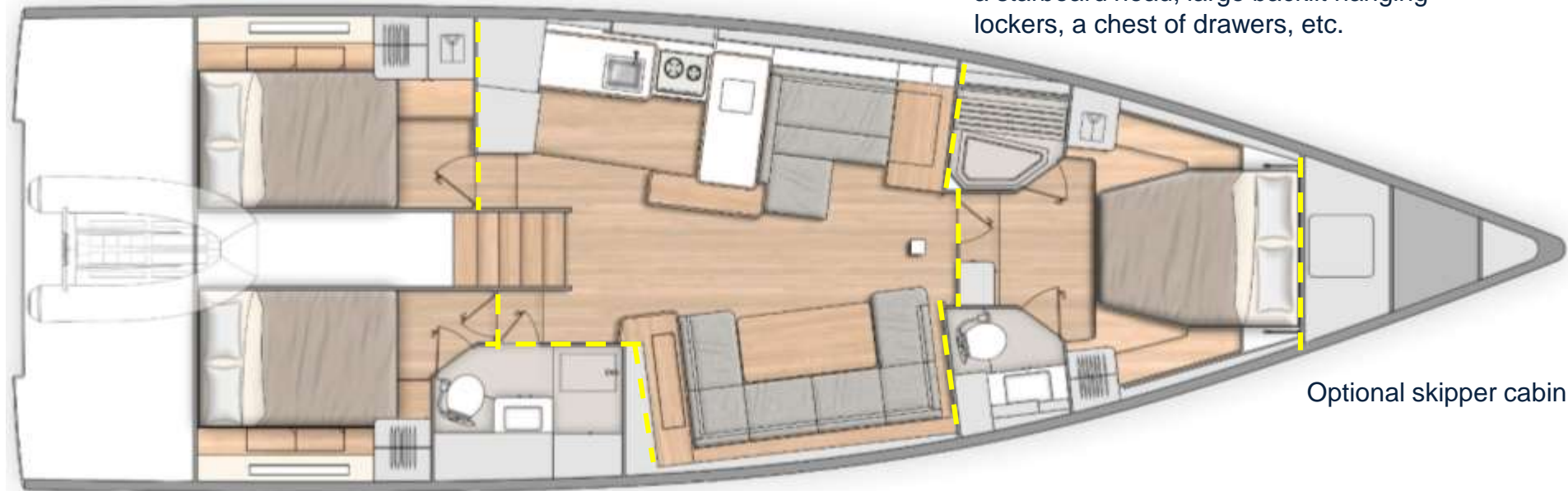
- Large saloon with top-of-the-range upholstery providing optimum comfort.
- Dedicated chart table: very comfortable spacious lounge-style space with a seat on which you can rest
- Large spacious ergonomically designed galley with all the comforts you need during long cruises



Spaces specifically for owners: luxury cruiser

The standard version has a very spacious galley with top-quality equipment and large storage spaces.

Designed for life aboard: the master cabin has a large easy-to-access double bed with a sea view, a large portside shower with a teak seat, a starboard head, large backlit hanging lockers, a chest of drawers, etc.



Optional skipper cabin

Guests enjoy real comfort!
Bright cabins, classy feel, big storage spaces
Large shower room with large independent shower space.

A comfortable layout with 2 distinct areas:

- Long chart table with a comfortable seat that is a joy to rest on.
- Large bright saloon with a very comfortable sofa



Large sea view

Large comfortable gently sloping 40° companionway, long handrails, backlit steps.

Easily accessible electrical control panel

Spacious ergonomic galley with top quality equipment as standard.

Spot for lifting 32" TV

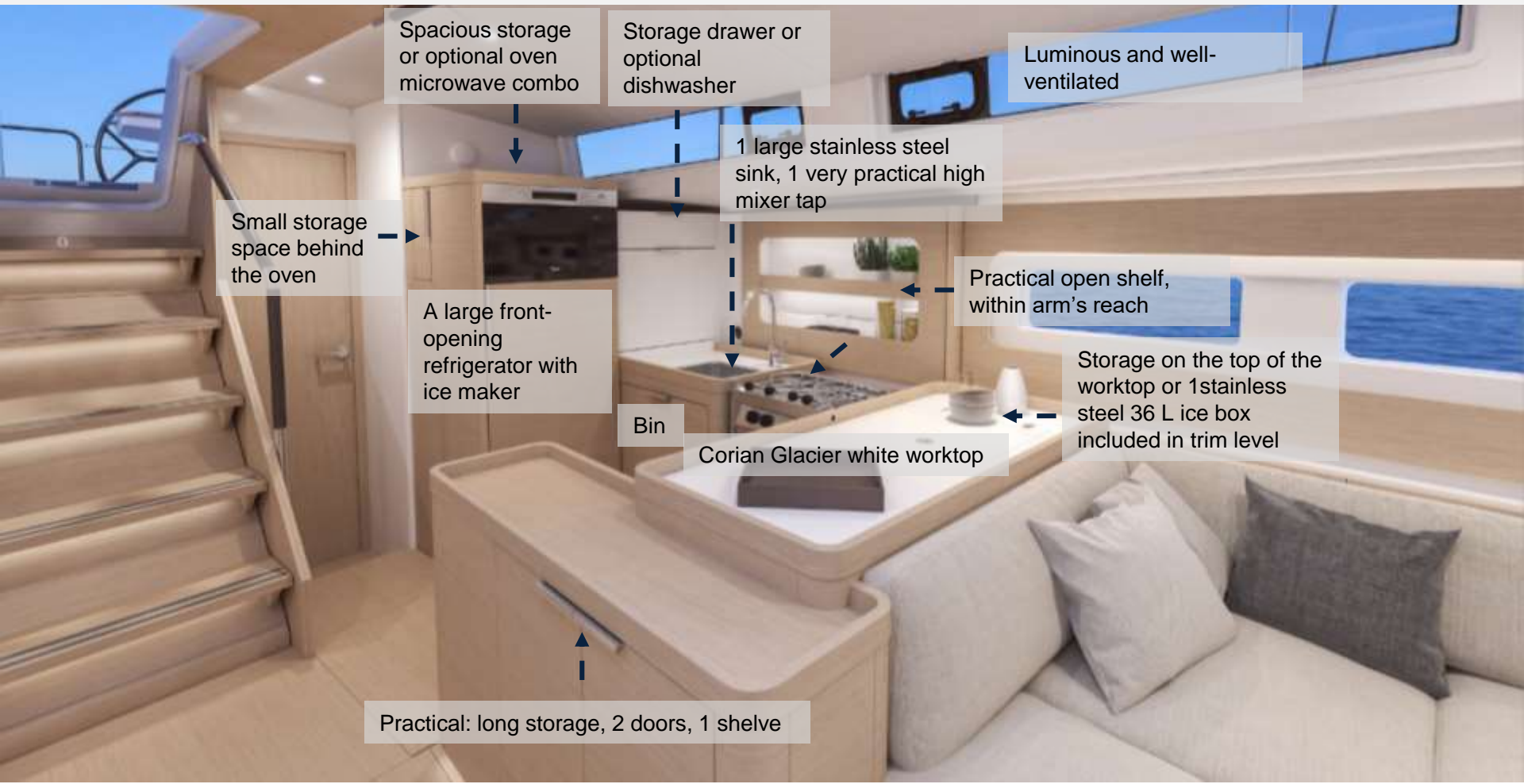
Fixed table with large top 1.35 m x 0.74 m

Beautiful lounge-style chart table facing the saloon. Also perfect for relaxing

Open passageway forward: flowing movement

Really comfortable with a HR foam core sofa with a soft welcoming overlay.

The galley combines qualitative equipment and large storage volumes



Spacious storage or optional oven microwave combo

Storage drawer or optional dishwasher

Luminous and well-ventilated

1 large stainless steel sink, 1 very practical high mixer tap

Small storage space behind the oven

A large front-opening refrigerator with ice maker

Practical open shelf, within arm's reach

Storage on the top of the worktop or 1 stainless steel 36 L ice box included in trim level

Bin

Corian Glacier white worktop

Practical: long storage, 2 doors, 1 shelf

Oceanis Yacht 54

E -BOOK



Plenty of openings for a nice natural light
Blinds as standard for protection against heat.

Beige padded ceilings and alpi
in the central part of the saloon
with 2 long handrails on each
sides

White lacquered wood

Solid alpi
fiddles

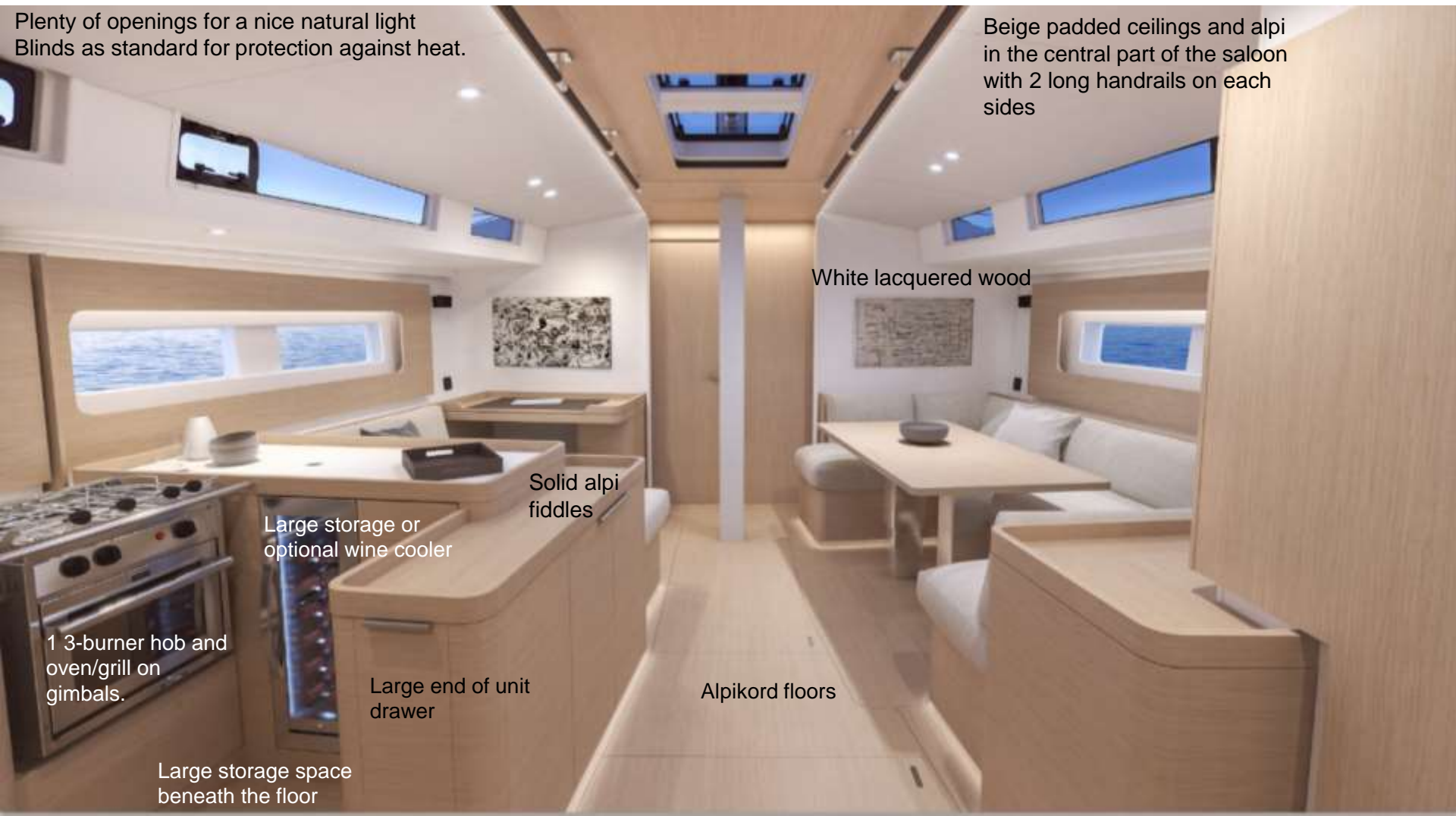
Large storage or
optional wine cooler

1 3-burner hob and
oven/grill on
gimbals.

Large end of unit
drawer

Alpikord floors

Large storage space
beneath the floor



Owner's cabin: designed for life aboard



LED back lighting enhancing the comfy atmosphere

Good sea view from the bed

Greige padded bed head.

Hanging locker with in-built LEDs

Ultra comfort luxury trim spring mattress

Seats on either side of the bed.

Head compartment

2 shoe racks under the bed

Large independent shower with wooden seat

Easy access to both sides of the bed

Owner's cabin: designed for life aboard



Hanging
locker with in-
built LEDs

Head
compartment
door

A full height
storage unit with
shelves and
drawers

Owner's cabin: designed for life aboard



Guest cabin



Good bed height throughout the cabin: bed head located aft

Hard blackout blind

Long hanging locker as standard. The locker size in the 3C3T version is reduced by half

Note: The optional washing machine is placed in this hanging locker. In the 3C3T version this option takes up the whole hanging locker space

Large drawer for storage

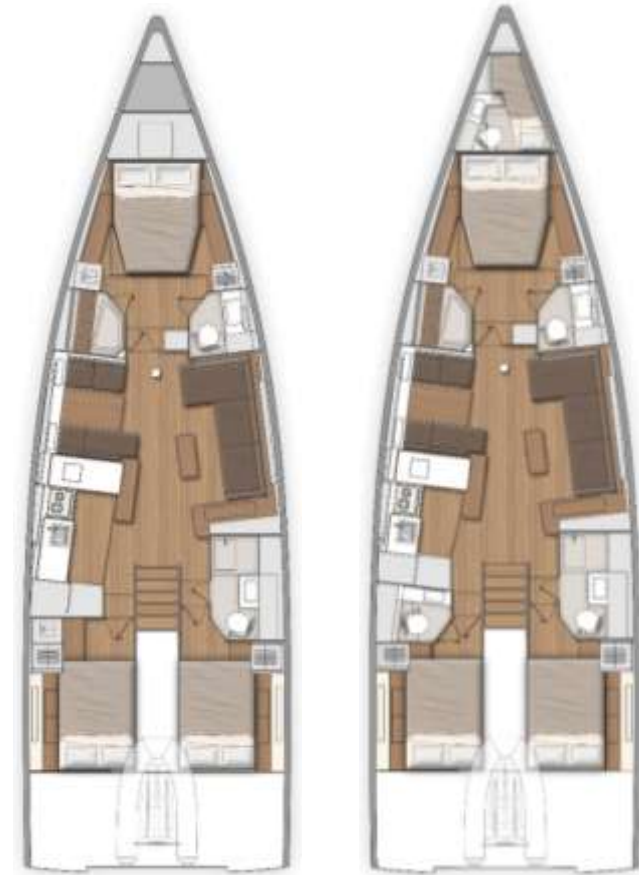
First Yacht version: sofa layout

Keep the benefits of the Oceanis Yacht's deck and cockpit and enjoy the modern interior design created for the First Yacht 53:

- Large lounge sofa
- Low table
- Portside saloon near galley

Available with oak or walnut alpi.

Oak alpikord floors.



3C2T

3C3T

Sofa version: Oak alpi - Lounge Méga Rabbit 160 upholstery



Sofa version: Oak alpi - Lounge Méga Rabbit 160 upholstery



Sofa version: Oak alpi - Lounge Méga Rabbit 160 upholstery



The background is a solid blue color with several large, overlapping, semi-transparent circular shapes in a lighter shade of blue. These shapes are positioned in the top-left and bottom-right corners, creating a sense of depth and movement. The word "Ambiance" is centered in the middle of the page in a white, sans-serif font.

Ambiance

AMBIANCE – Standard walnut

AMBIANCE – Optional oak alpi



Wood & Floor

		54
Standard ambiance	Walnut alpi + Oak Alpikord floors / Alpi noyer + planchers Alpikord chêne	✓
Optional ambiance	3 gloss oak alpi + Oak alpikord floors / Alpi chêne 3 gloss + planchers alpikord chêne	✓

INTERIOR UPHOLSTERY /SELLERIES INTERIEURES

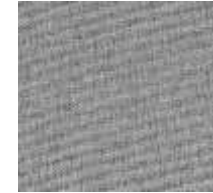
		54
Interior upholstery / Sellerie intérieure	Lounge Greige 160	✓
	Lounge Falcon 162	✓
	Lounge Méga Rabbit 160	✓
Covering on handrails / Gainage mains courantes	Meteor	✓



Lounge Greige 160
Standard



Lounge Falcon 162



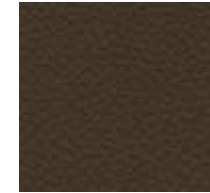
Lounge Méga Rabbit 160

LUXE UPHOLSTERY / SELLERIES LUXE

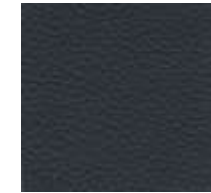
		54
Leather / Cuirs	DK 45 (Taupe)	✓
	DK02 (chocolat)	✓
	DK26 (bleu marine)	✓
Nubuck	LG14 (Taupe)	✓
	LG 13 (chocolat)	✓
Ultraleather	Pelican 291-5676	✓
	Stone 291-3602	✓



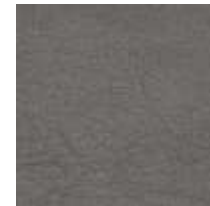
DK 45 (taupe)



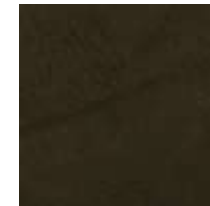
DK 02 (chocolat)



DK 26 (bleu
marine)



LG 14 (taupe)



LG 13 (chocolat)



Pelican 291-5676



Stone 291-3602

✓ = standard ✓ = option

OUTDOOR

Upholstery – Protection / Selleries - Protections

54

Exterior upholstery / Sellerie extérieure	Cockpit seats and backrests - sunbeds on each side of companionway – helm seat backrest / Assises et dossiers cockpit - Bains de soleil de descente- dossier barreur	<i>Diamante snow</i>	✓
		<i>Dolce 51</i>	✓
Outside protections / Protections extérieures	Sprayhood / Capote de roof	<i>Charcoal Grey</i>	✓
	Cockpit bimini/ Bimini de cockpit		✓
	Side Sunshades for bimini (Batyline) / Toiles d'ombrage latérales du bimini (Batyline)		✓
	Bimini Closure / Fermeture du bimini		✓
	Forward Sunshade / Toile d'ombrage avant		✓

Hull colour / Couleur de coque

54

Hull colour / Couleur de coque	White gel coat + hull decorated in metallic grey / Gel coat blanc + déco de coque gris métal	✓
	Pearl grey gel coat + hull decorated in white / Gel coat gris perle + déco de coque blanche	✓
	Light paint + hull decorated in metallic grey or dark paint + hull decorated in pearl white / Peinture claire + déco de coque gris métal ou peinture foncée + déco de coque blanc nacré	✓

Covers / Housses – Lazy Bag

54

Covers / Housses	Cockpit table / Table de cockpit	<i>Charcoal Grey</i>	✓
	Wheels / Barres à roue		✓
Lazy Bag	Natural		✓



Diamante Snow



Dolce 51



Charcoal Grey

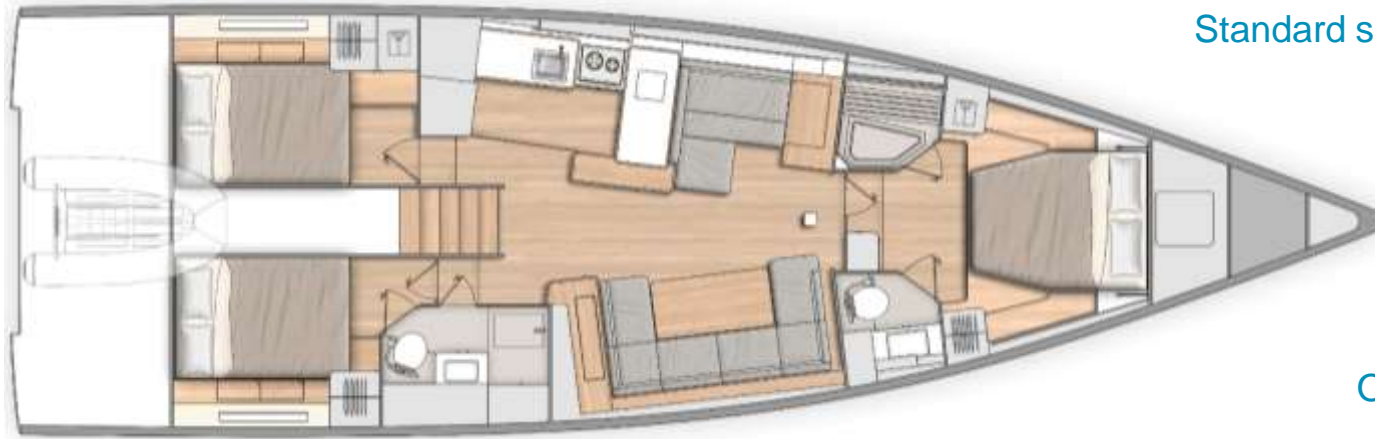
Gel-coat



Pearl Grey / Gris Perle

Offered layouts

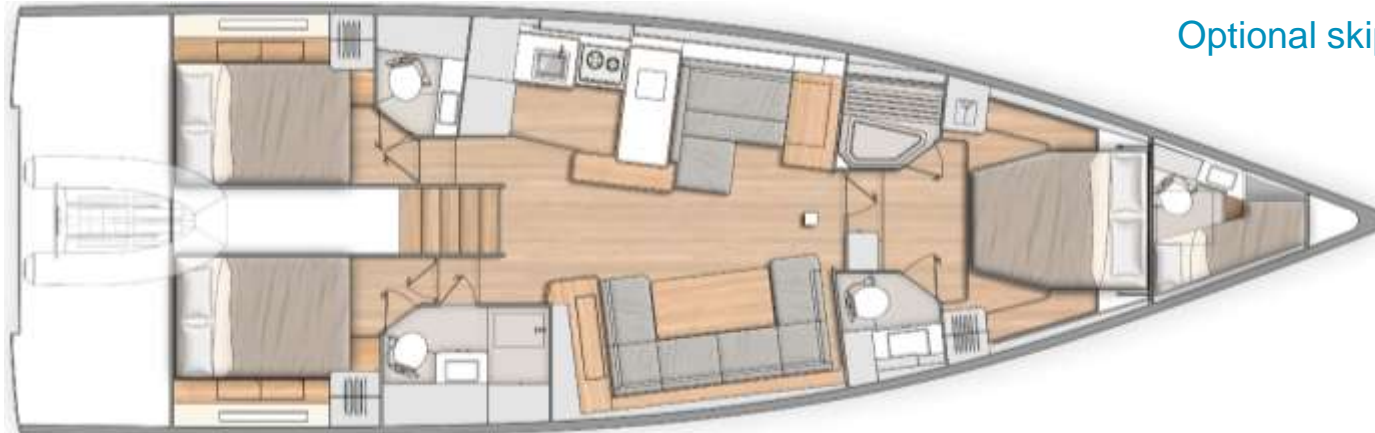
Standard : 3 cabins 2 heads



Standard sail locker

OR

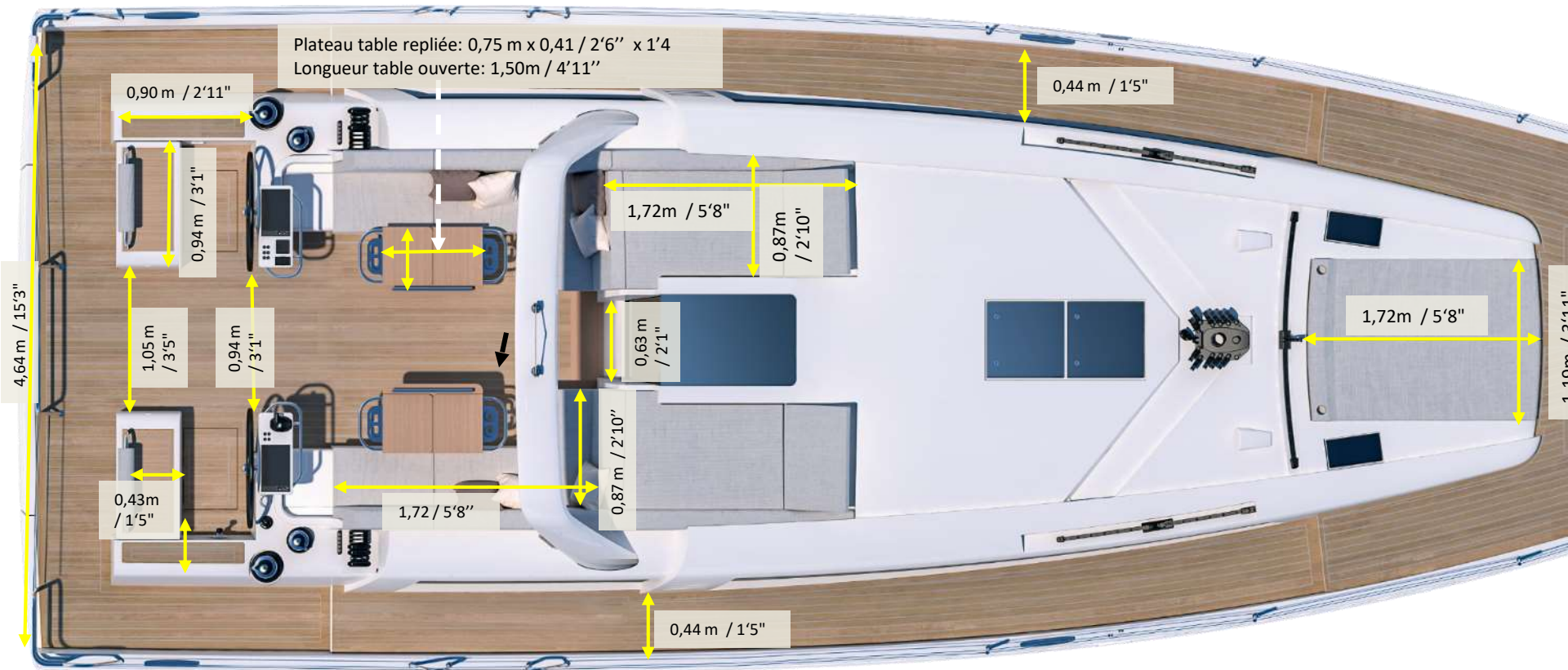
Option : 3 cabins 3 heads



Optional skipper cabin

Exterior dimensions

Exterior dimensions / Dimensions extérieures

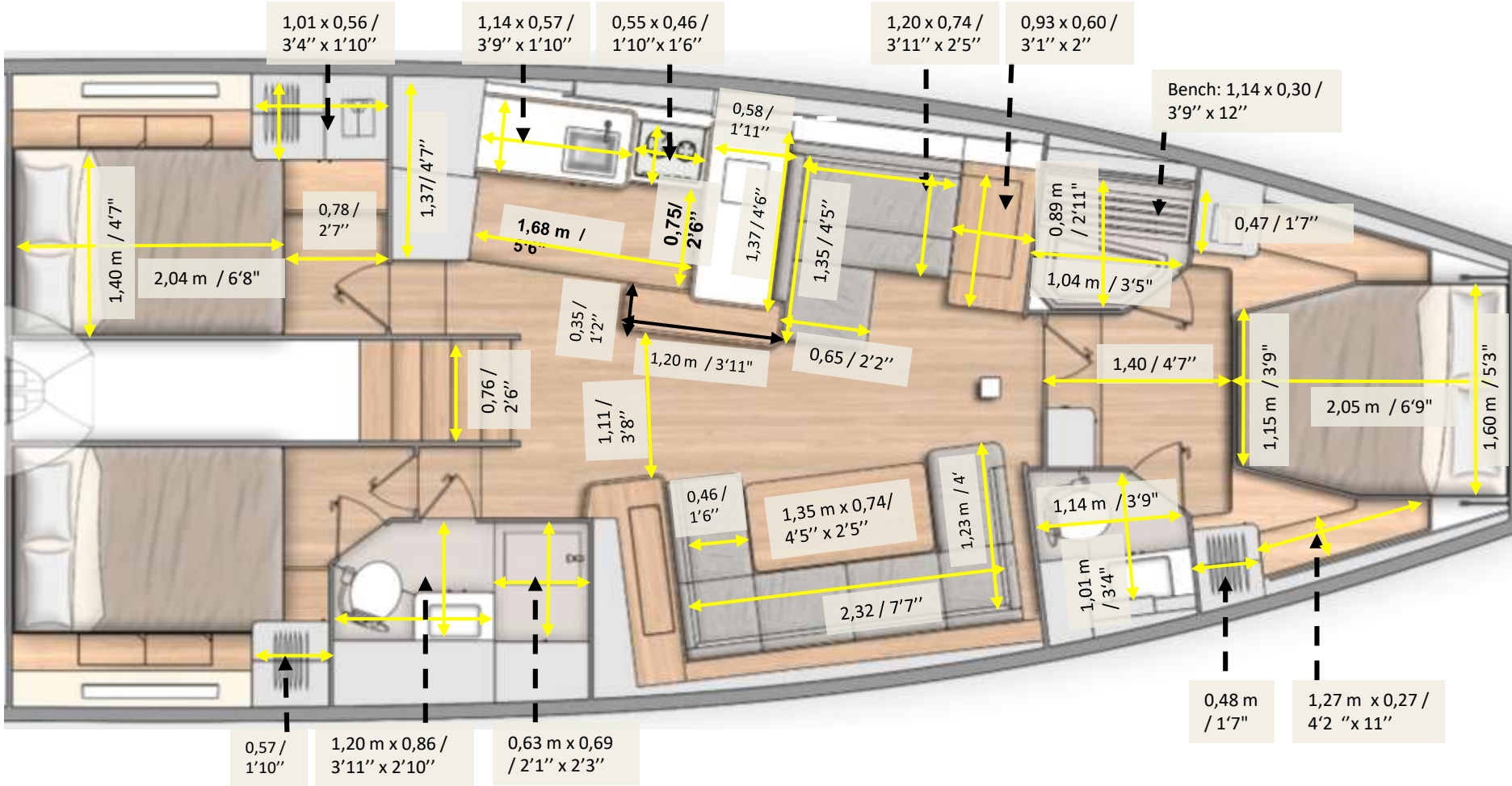


Aft platform opened/ Plateforme ouverte:
2,61 m x 0,93 m / 8'7" x 3'1"

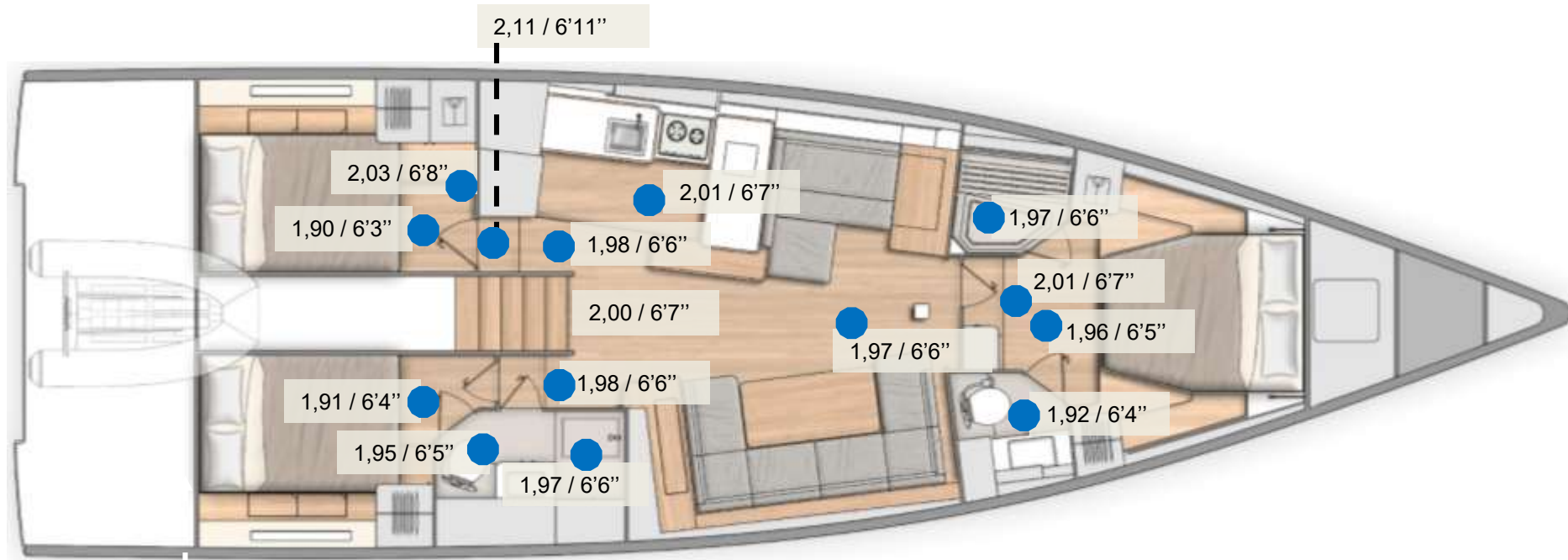
0,76 x 0,48 m / 2'6" x 1'7"

Interior dimension & headroom

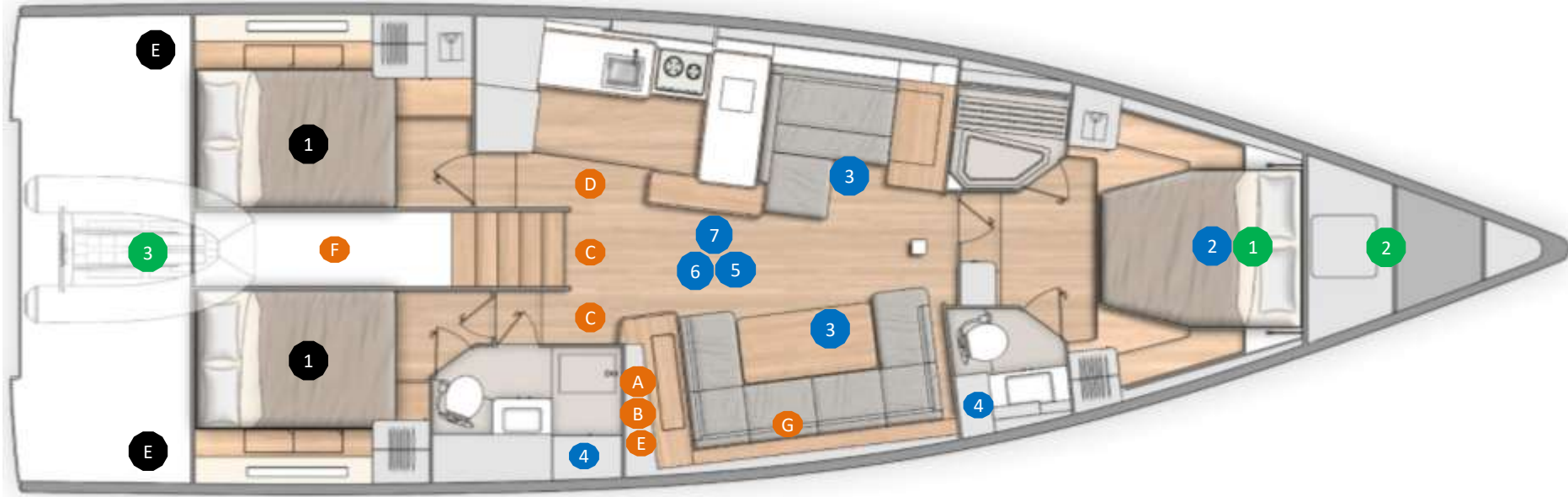
Interior dimensions / Dimensions intérieures



Headroom



Location for technical equipments

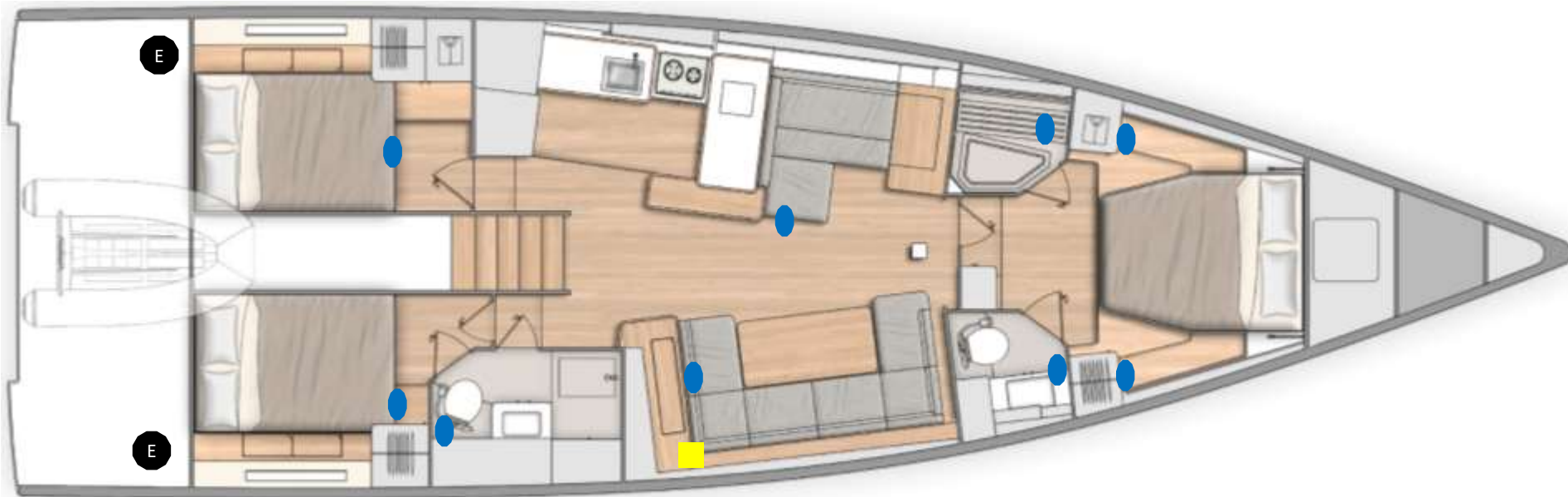


- 1** Fuel tank 200 L / 53 US Gal - standard
- 2** Fresh water tank 380 L / 100 US Gal - standard
- 3** Fresh water tank 150 L / 40 US Gal - standard
- 4** Holding tank – 80 L / 21 US Gal - standard
- 5** Water heater 40 L / 11 US Gal- standard
- 6** Plumbing board (accumulator tank- water units....)
- 7** Water maker 60L/h - **option**


- A** Electrical panel
- B** Inverter 2 000 VA 12 V – 230 V - **option**
- C** 3 AGM service batteries (140 Ah), 1 engine battery AGM (100 Ah)
- D** 2 x 140 Ah additional service batteries- **option**
- E** 1 battery charger (60 Ah) - standard
1 battery charger (40 Ah) - **option**
- F** Generator 7,4 KVA - **option**
- G** Electric panel


- 1** Bow thruster
- 2** Retractable bow thruster
- 3** Retractable stern thruster
- E** Boiler 5 500W - **option**

Heating system

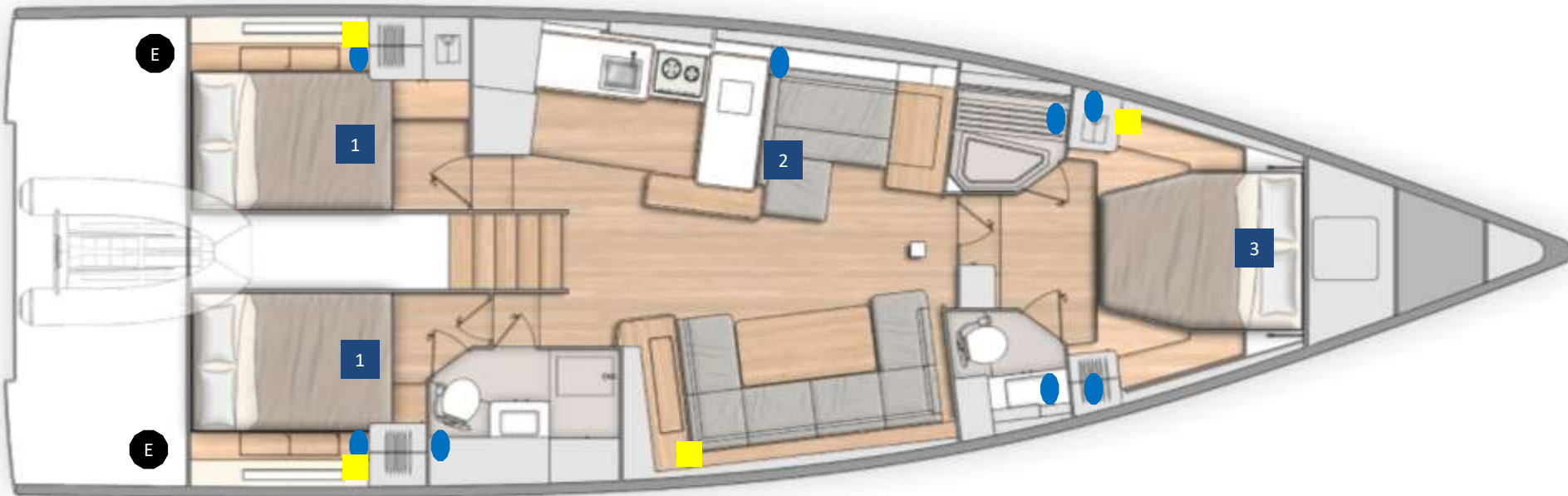


E Boiler 5 500W - *option*

 Hot air outlet

 Thermostat


Air conditioning




1 Air conditioning unit 8 000 BTU

2 Air conditioning unit 16 000 BTU

3 Air conditioning unit 12 000 BTU

 Air conditioning outlet

 Thermostat