

OCEANIS 34.1

E-BOOK



BENETEAU
AVANT-GARDE IN BOATING



BENETEAU

1. Key Points

GENERAL SPECIFICATIONS *

• L.O.A	10,77m	35'4"
• Hull length	9,96m	32'8"
• L.W.L.	9,50m	31'2"
• Beam	3,57m	11'9"
• Deep draft (Cast iron)	2,00m	6'7"
• Deep ballast weight	1 580kg	3,482 lbs
• Shallow draft (Cast iron)	1,50m	4'11"
• Shallow ballast weight	1 860kg	4,099 lbs
• Performance draft (Hydraulic retractable keel)	1,25 -	
	2,550m	4'1" - 8'4"
• Ballast weight performance	1 506kg	
	3,319 lbs	
• Air draft (all masts), with aerial	15,57m	51'1"
• Light displacement	5 470kg	12,056 lbs
• Fuel capacity (standard)	130L	34 US Gal
• Fresh water capacity:	231L	61 US Gal (std)
	130L	34 US Gal (opt)
• Engine power	21 HP	21 HP (std)
	30 HP	30 HP (opt)

EC CERTIFICATION *

- Category A - 6 people
- Category B - 8 people

ARCHITECTS / DESIGNERS

- Naval Architect: Marc Lombard
- Outside & interior design: Nauta Design

STANDARD SAILS DIMENSIONS *

• Classic mainsail (standard)	31,40m ²	338 sq ft
• Furling mainsail (Option)	26,20m ²	282 sq ft
• Self-tacking jib (standard)	17,10m ²	184 sq ft
• Furling genoa (106 %)	23,30m ²	251 sq ft
• Code 0	50,40m ²	542 sq ft
• Asymmetric spinnaker	80,00m ²	861 sq ft
• Classical mast:		
- I	12,82m	42'1"
- J	3,65m	12'
- P	12,66m	41'6"
- E	4,15m	13'7"
• Furling mast:		
- I	12,79m	42'
- J	3,65m	12'
- P	12,56m	41'2"
- E	4,50m	14'9"

PERFORMANCE SAILS (Requires standard classical mast)

- Square top mainsail 35,30m² 380 sq ft
- Genoa (on flatdeck furler) 27m²

Oceanis 34.1

E -BOOK



The latest-generation cruiser



Oceanis 34.1

E -BOOK



The latest-generation cruiser



This new 34' boat from the Family Cruiser range offers numerous advantages:

Easy Sailing for calmer cruising with more sail than its predecessor, while being easier to use

Performance to make the most of the flared hull, the slim profile and the square-top mainsail maximise its potential.

Space and comfort for all, thanks to the work on the hull and the layout



The latest-generation cruiser: Easy Sailing



A standard designed for simplicity

- Classic mast
- Dacron self-tacking jib
- 1 rigging winch on the coachroof

Family and life on board with young children or guests who are new to pleasure-boating are at the heart of any new Oceanis project.

The Oceanis 34.1 is no exception and, although it has more canvas than its predecessor, this boat can be handled easily by crews of all abilities for safe outings.

The latest-generation cruiser: Comfort & Space

Designed for comfort

The large volume of the hull above the waterline provides an unrivalled level of comfort.

Exterior:

- Spacious cockpit with long seats
- Large bathing platform, adding a delightful living area when the boat is moored

Interior:

- The saloon fills the full width of the hull with a large drop-leaf table
- Highly ergonomic L-shaped galley, practical when sailing
- Cabins fitted with large beds
- An 'owner' version with a 2-cabin layout, featuring a very large aft head compartment with a large shower area, along with a good workshop area

For sailing:

- The hull chine reduces heel.
- The lack of a backstay completely frees up the stern of the boat, providing a very comfortable helm area



The latest-generation cruiser: **FIRST LINE**



Designed for performance: the slim hull profile lends itself particularly well to the First Line configuration

A **First line** package to upgrade the standard deck fittings combined with **optional Performance Sails**: a powerful square-top mainsail thanks to its rigidity and its volume at the masthead, combined with a FlatDeck genoa furler, the latter providing a larger genoa area than a traditional furler.

This Performance version should preferably be combined with the standard deep-draught ballast or the hydraulic swing keel to give the best feeling and to make the most of the hull's potential, thanks to the lower centre of gravity.

*First Line version compatible with the shallow-draught keel.
First Line version not compatible with the Upwind & Downwind packs.*

FIRST LINE

Boast supplied without sail - Performance sails optional

- Polyester bowsprit with integrated anchoring gear and bobstay
- Flatdeck genoa furler
- Additional jammers
- Performance, Punch, Dyneema core running rigging
- Asymmetrical spinnaker rigging / Code 0 (sheets, Blocks, Halyards)
- German system
- 1 Starboard manual (H35.2 STA) rigging winch + halyard bag
- 2 Manual (H40.2 STA) genoa sheet winches + Aluminum "Speed Grip" winch handle + Winch handle box
- Performance hull decoration (Red sticker)



The swing keel : an appendage with a number of advantages.

Deep draught performance with the appeal of dinghies

Performance under sail: the performance of very deep ballast in all points of sailing with limited drag (no bulb)

Incredible stability without increasing the light displacement (weight identical to a deep draught fixed keel)

Beachable boat: ideal for areas with a high tidal range, hull strengthened for the use of legs

Inaccessible sites become explorable: in the lifted position the shallow draught gives access to shores and mooring areas with shallow waters

Extremely easy to work: just press on the control button in the cockpit to raise and lower

A very safe system: in the event of collision the cylinder pressure is released so as not to damage the keel.

A completely watertight structure: the casing is moulded along with the hull. In addition, in the raised position, the centreboard always remains outside the hull.

Several openings have been anticipated to facilitate maintenance
The centreboard can only be worked when the engine is underway: no risk of a badly positioned centreboard under sail



Oceanis 34.1

E-BOOK

Thought for all uses

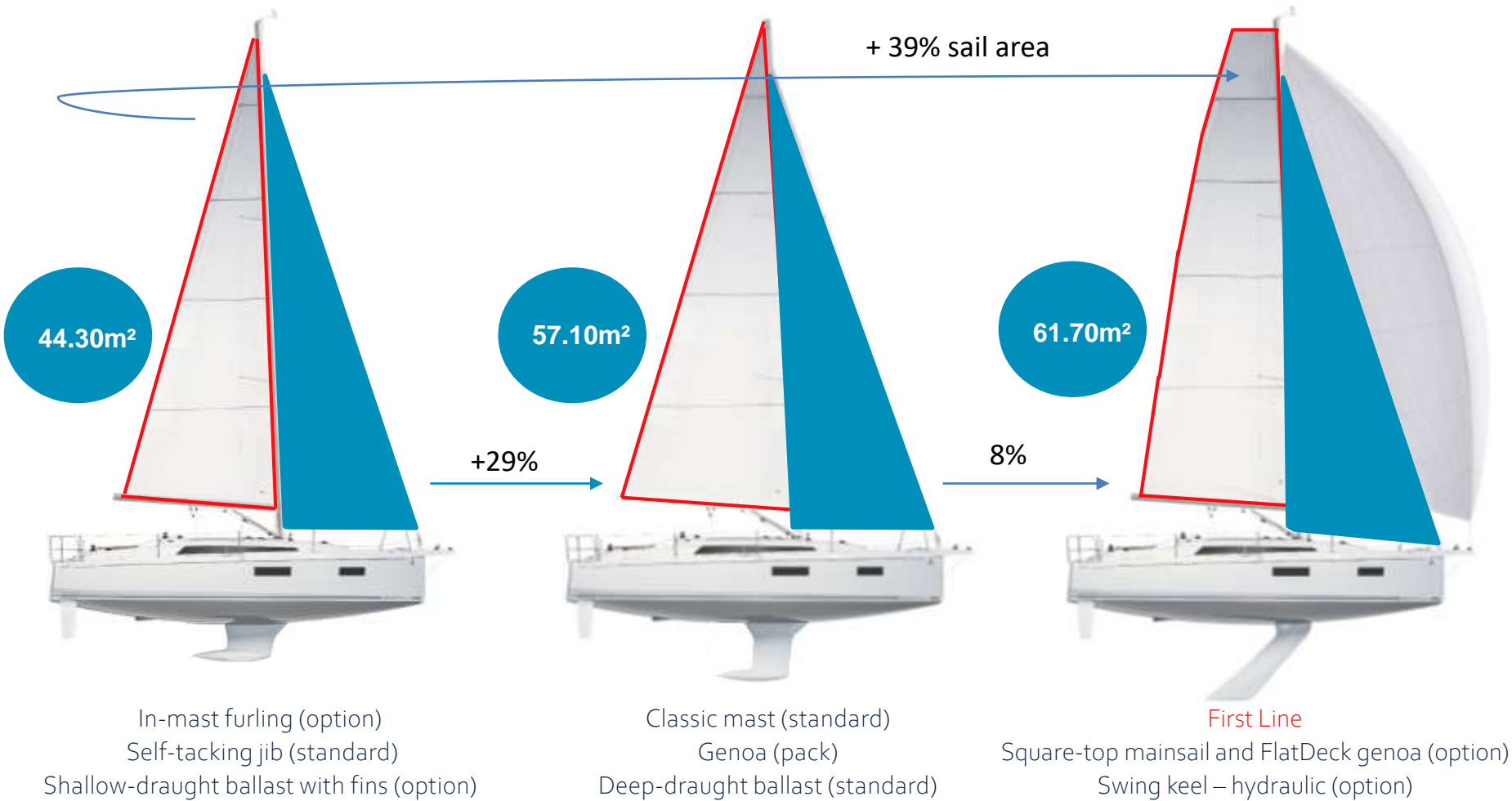


Smart cruiser

Comfort cruiser

Fast cruiser

Multiple configurations for all sailing profiles: 3 rigs - 3 ballasts



Deck - Cockpit

Oceanis 34.1

E -BOOK



Standard deck equipment

Standard cockpit table

2 polyester drop leaves, stainless steel structure with handrail function

1 winch on the coachroof to port

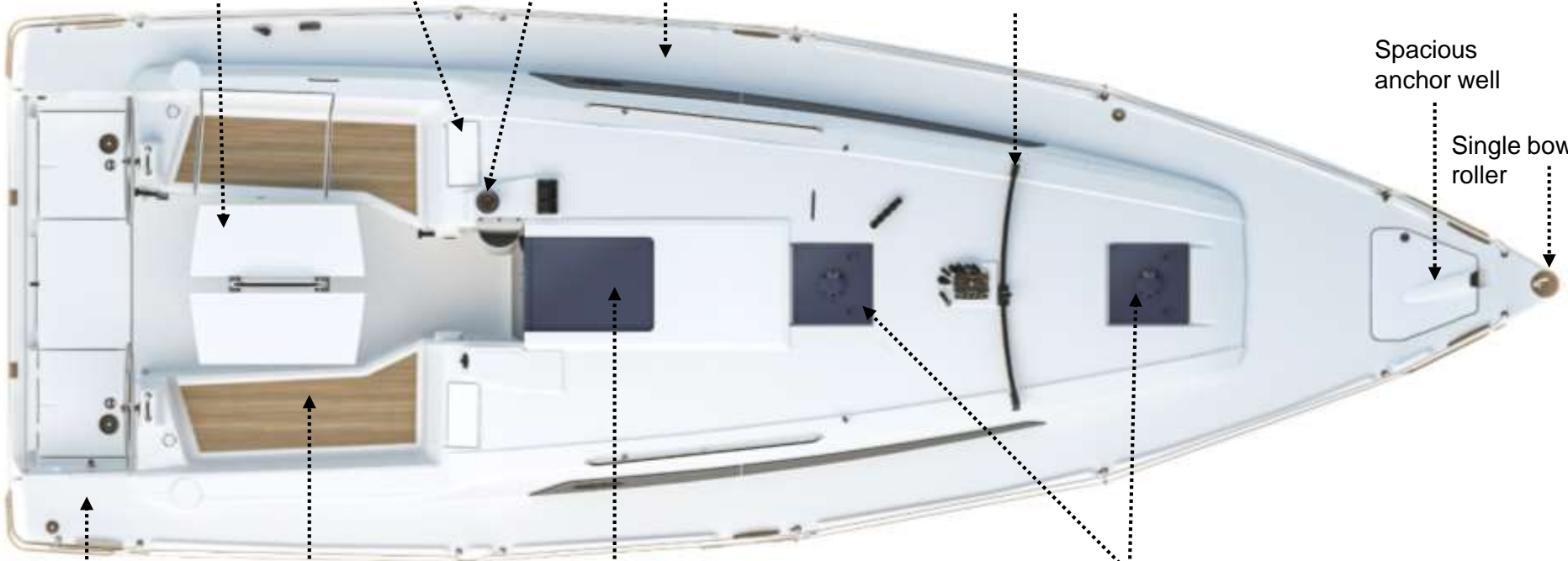
Opening portholes in the aft cabins (standard)

Wide catwalks, even at cockpit exit for safe movement

Self-tacking jib track fitted on deck as standard

Spacious anchor well

Single bow roller



Large side helm area
Lifting stern seats to match trim

Good length seats for guests
1.56 m x 0.50 m / 5'1" x 1'8"
Cockpit locker on port side

Large companionway door with Plexiglas cover, which helps to provide light inside

2 T44 deck hatches with fan to provide plenty of light and ventilation

Oceanis 34.1

E -BOOK



Optional deck equipment

“Luxe” wooden drop-leaf cockpit table: central stowage (15 L/4 US Gal), cup holder, 2 handrails, USB socket. Included in Family trim level with polyester drop leaves

Offshore electronics pack

Opening portholes in the aft cabins (standard)

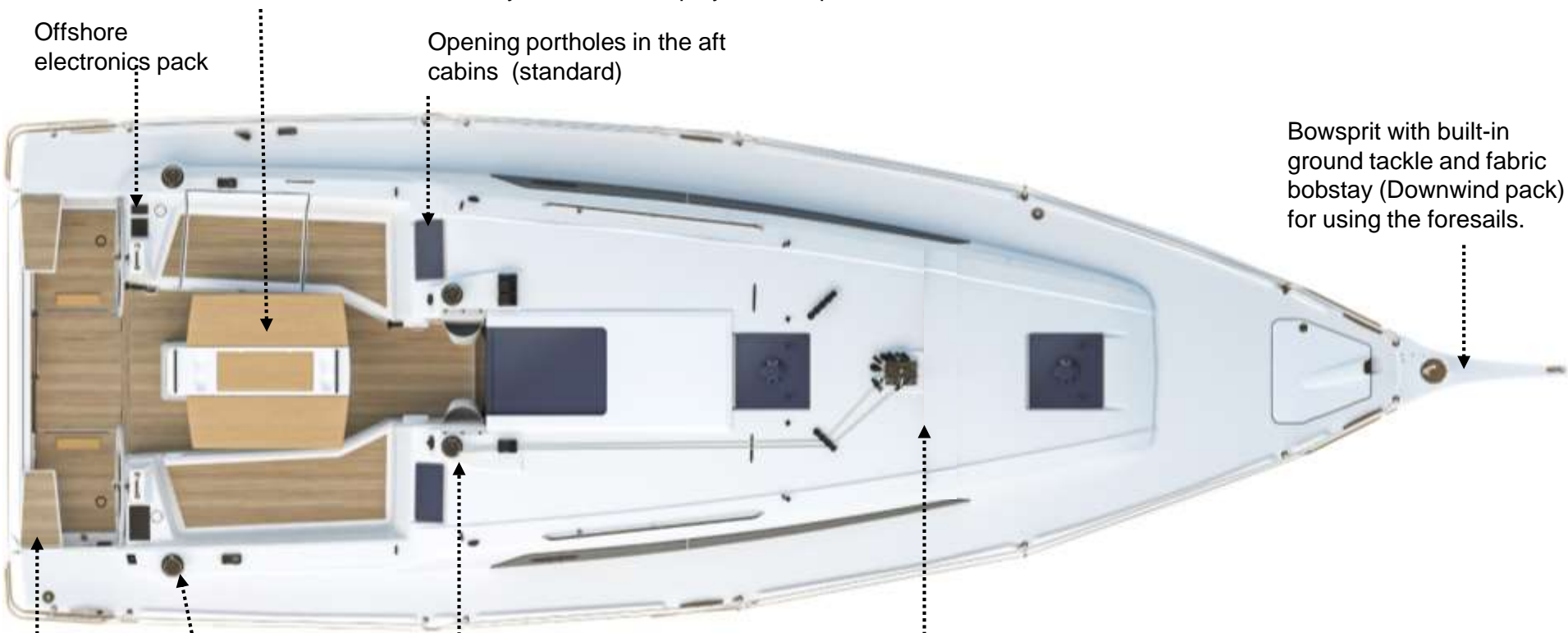
Bowsprit with built-in ground tackle and fabric bobstay (Downwind pack) for using the foresails.

Lifting stern seats (to match trim)

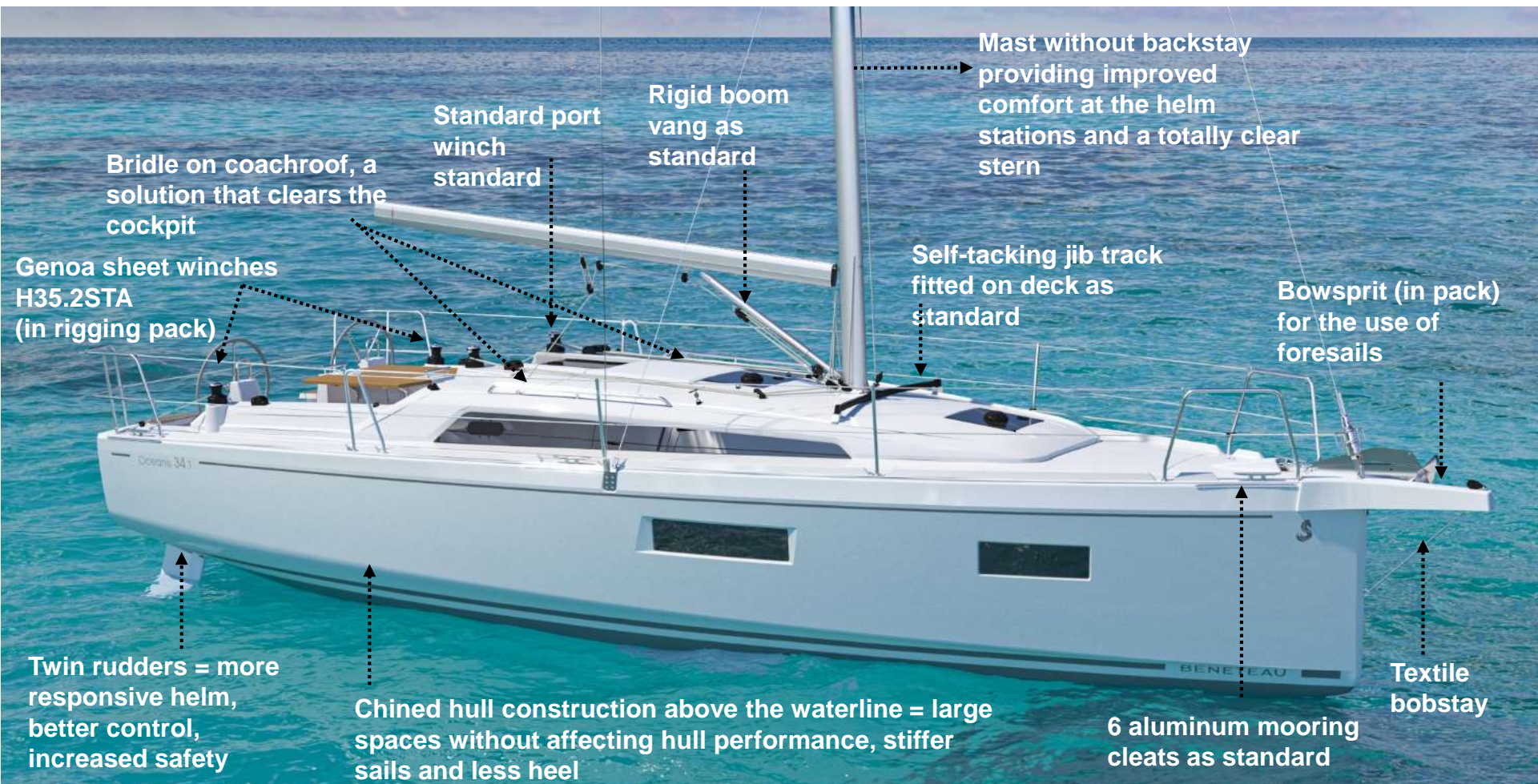
H35.2 genoa winches (rigging pack)

Starboard winch with halyard bag (rigging pack)

Self-tacking jib track removed in Upwind pack: the self-tacking jib is replaced by a genoa furler



Deck equipment



Mast without backstay providing improved comfort at the helm stations and a totally clear stern

Rigid boom vang as standard

Standard port winch standard

Bridle on coachroof, a solution that clears the cockpit

Self-tacking jib track fitted on deck as standard

Bowsprit (in pack) for the use of foresails

Genoa sheet winches H35.2STA (in rigging pack)

Twin rudders = more responsive helm, better control, increased safety

Chined hull construction above the waterline = large spaces without affecting hull performance, stiffer sails and less heel

6 aluminum mooring cleats as standard

Textile bobstay

Cockpit equipment



Opening portholes for aft cabins . (standard)

Luxe cockpit table (option)

Display included in Offshore pack

No backstay: frees up aft movement.

Big aft platform with manual opening in trim level
2,35 m x 0,70 m / 7'9" x 2'4".
With fixed telescopic stainless steel swimming ladder

1 starboard manual (H35.2 STA) coachroof winch + Cadet Grey halyard bag (in rigging pack)

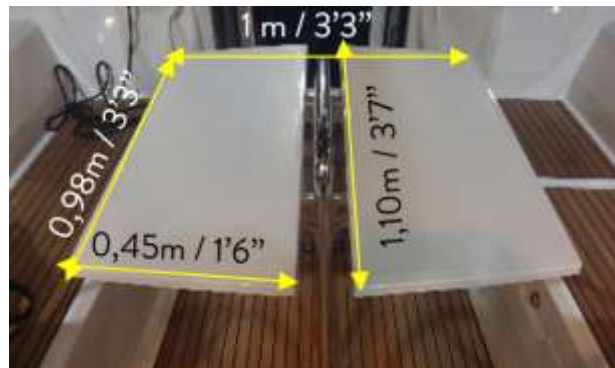
7" screen in Offshore pack

Slatted teak helm seats (trim level)

Liferaft storage accessible from the platform and the cockpit sole. Useful dimensions: 800mm x 505mm x 370mm / 2'7" x 1'8" x 1'3")

Cockpit options: tables

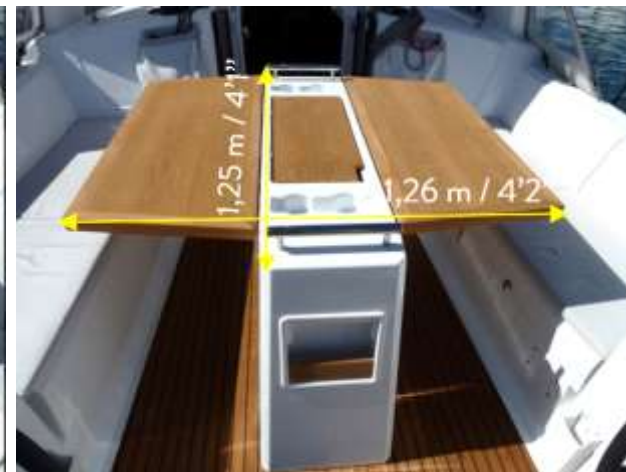
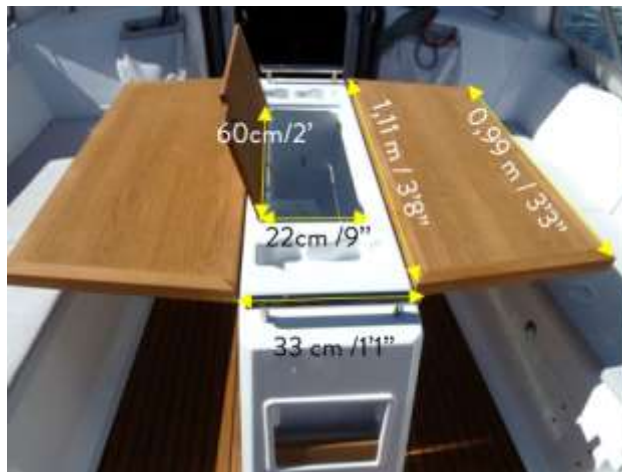
Standard



Luxe cockpit table with GRP flaps.

Included in Family trim level

"Luxe" cockpit table with wooden flaps . Requires Confort trim level



- 2 Stainless steel handrails
- 1 Waterproof USB socket for charging smartphone or using LED lighting (lighting not supplied)
- Central storage (15L / 4 US Gal) 60cm x 22cm / 2'x9", depth: 32cm / 13"
- Cup holders

Cockpit options: sprayhood and upholstery

Cadet Grey coachroof sprayhood

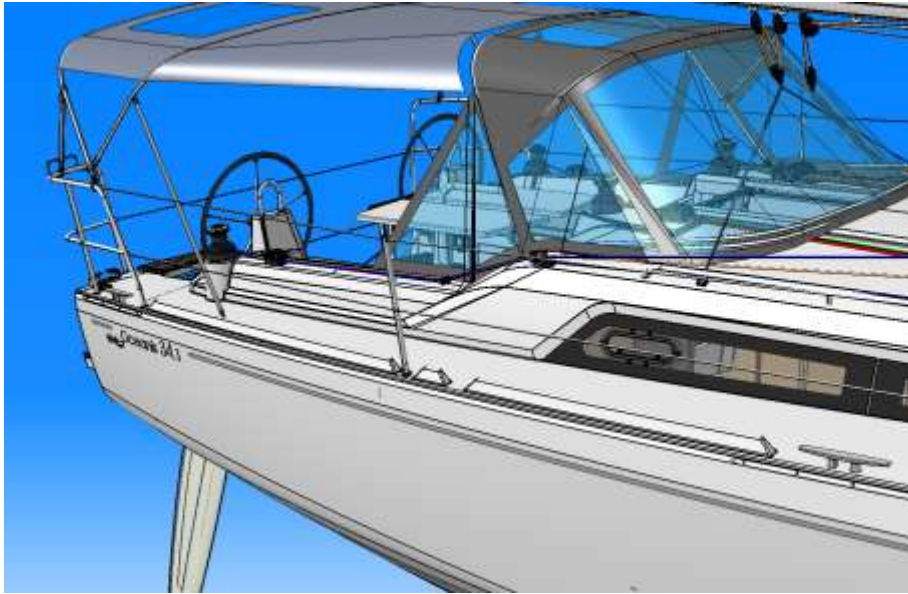


Outside upholstery: Dolce 51 seats

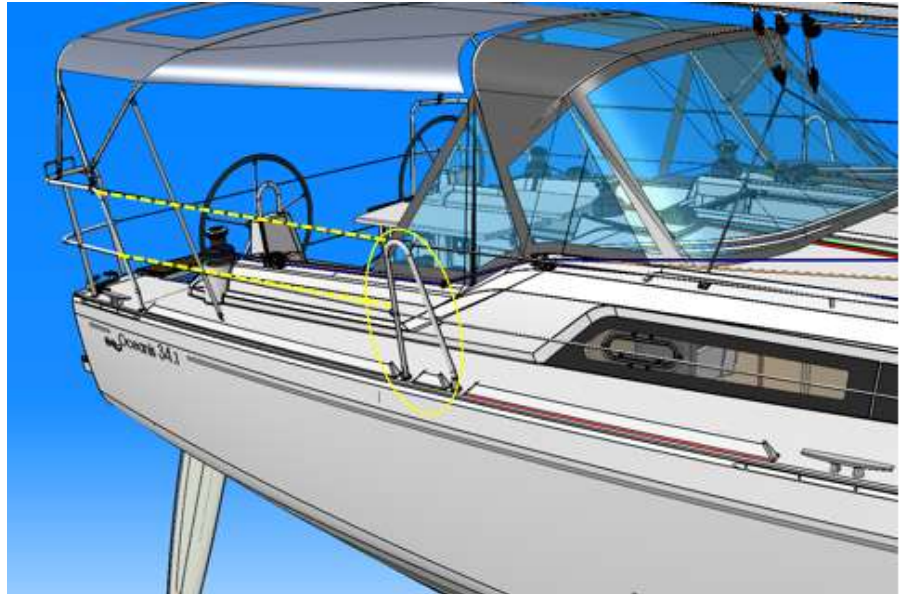


Cockpit option: access openings to port and starboard / bimini

Standard double guard lines

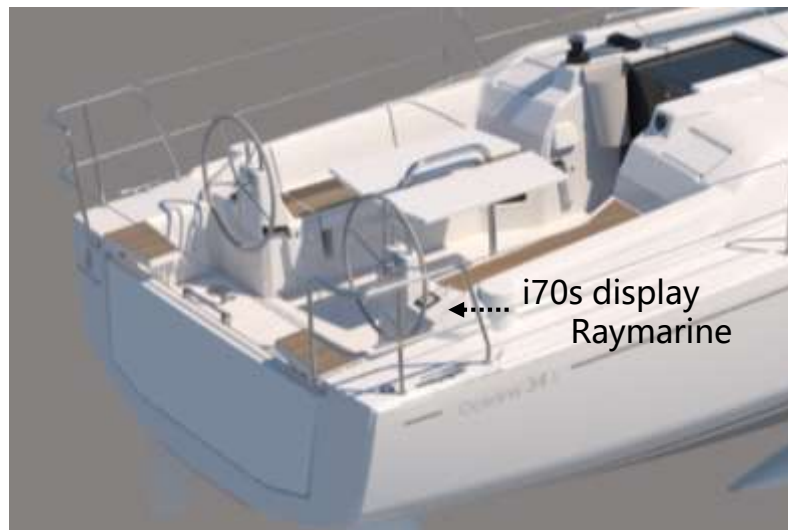
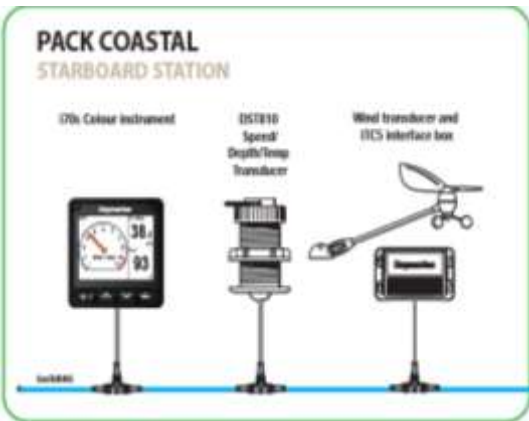


Optional access openings



Raymarine Electronic

Raymarine Coastal pack



Raymarine Offshore pack



OPTIONAL AUTOPILOT REMOTE CONTROL

S100 wireless
Remote control



B&G Electronic: Offshore Pack



Pilot control p70s
& i70s display

Multifunction touchscreen
Axiom + 7"

New comfort option:

**Pre-wiring autonomous air conditioning on Lithium battery in forward cabin and saloon 8,000 BTU *+
recharging and use of motor or shore power - (12V-230V)**

Allows to use air conditioning at anchor
Very convenient for cruises in warm areas

Autonomy: 3 hours on battery, useful when at anchor.

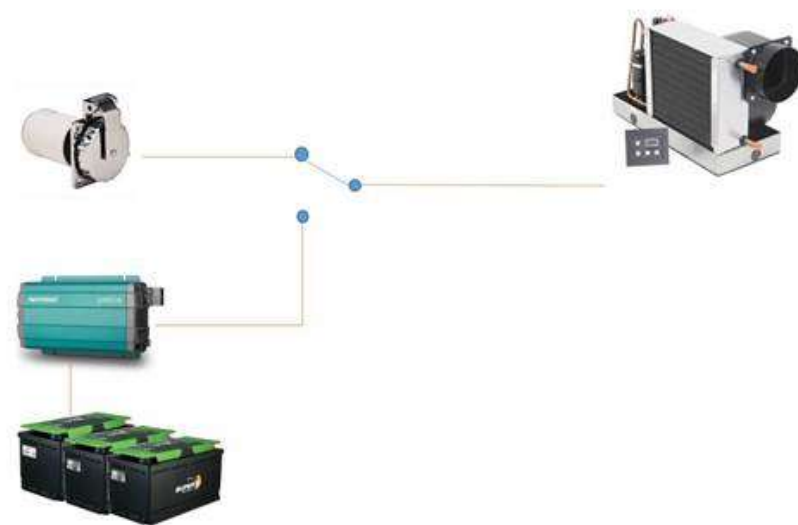
Can also be used with engine or shore power

Recharge via shore supply or with the engine.

Included:

- 1 12 V/230 V - 2 000 W inverter
- 3 Lithium batteries (90 Ah)
- 1 60 Ah service battery charger (replacing the 40 Ah charger for the trim level)
- Navicolor 3.5" screen for displaying the battery charge level

Autonomy depends on the comfort equipments used in 12V (lighting, refrigerator, USB sockets, fans, etc.) simultaneously with the air conditioning



*Not compatible with heating, inverter, lithium battery options

- Required Confort or Family trim level

New comfort option:

**Pre-wiring autonomous air conditioning on Lithium battery in forward cabin and saloon 8,000 BTU *
+ recharging and use of motor or shore power - (12V-230V)**

Energy performance

Example of discharge with use of the air conditioning on the inverter for 3 hours at anchor

Equipment	Usage time	Power consumption (Ah)
HIFI	30 min.	3.5
Water pump	1 h	7.5
Electric WC	10 min.	1.25
Refrigerator	3 h	13.8
Lights	20min.	1
1 USB telephone charge	2 h	1.6
air conditioning on inverter	3 h	215.4
	Total power consumption	244.05

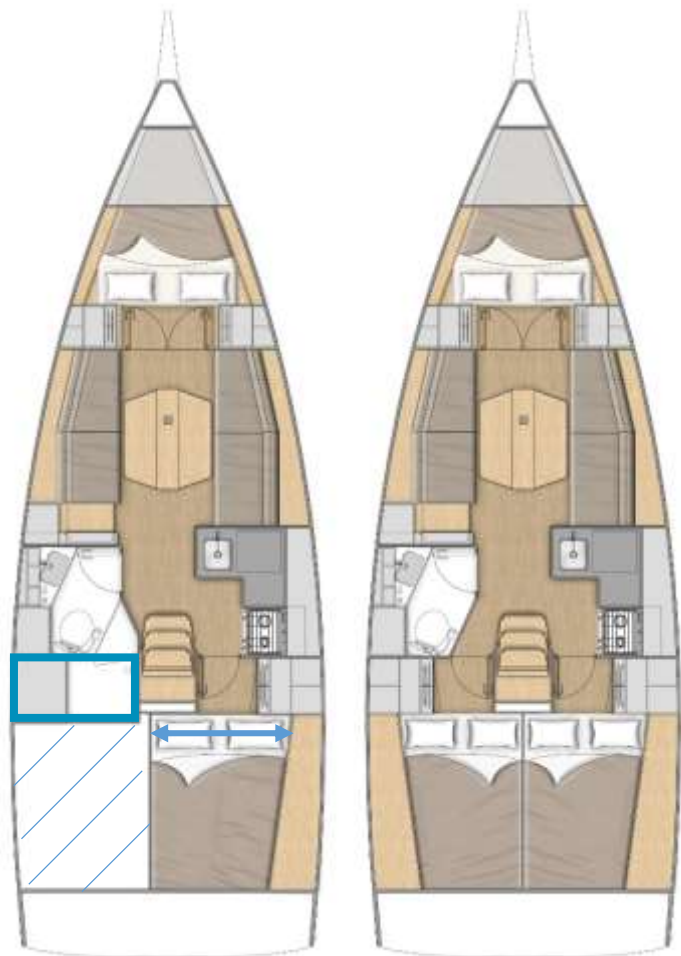
The Lithium battery bank provides a capacity of 270 Ah

Information on the battery charging status is available on the built-in Navicolor screen

Layouts

Interior

2 layout versions



Version 2C1T

for cruising in complete comfort:

This version has the benefit of a large aft head compartment with a very spacious separate shower area

Extensive storage space accessible from the cockpit bench and from inside via an access hatch in the shower bulkhead

A very comfortable aft cabin with a large double guest bed (1.60 m at headboard)

Version 3C1T

for larger seating capacity and with a view to cruising with a couple of guests

The aft cabins are symmetrical.

The head compartment is smaller to allow for the port aft cabin.

L-shaped ergonomic galley, saloon filling the full width of the hull, chart table and forecabin remain unchanged



Shelving on each side along the entire length of the saloon

Very long hull portholes

L-shaped galley, practical when the boat is heeling. With opening porthole

Chart table with open shelves

Saloon table with storage on top and 2 drop leaves

Saloon filling the width of the hull; long, comfortable bench seats
They can be used as single berths

Oceanis 34.1

E -BOOK



Saloon

Fixed coaming window for more light

Access to owner's cabin with double door, giving the impression of more space

Indirect LED lighting under top shelves (trim level)

Beige upholstery as standard

Open storage space behind the saloon seat backs



Oceanis 34.1

E -BOOK



Chart table



2-cabin version with large aft head compartment

3 companionway steps, for ease of movement to cockpit.

Standard folding chart table with storage under the tabletop. 2 shelves with fiddle rail on top. 12 V panel and electronics nearby

Oceanis 34.1

E -BOOK



Saloon

Fixed coaming window for more light

Access to owner's cabin with double door, giving the impression of more space

Indirect LED lighting under top shelves (trim level)

Beige upholstery as standard

Open storage space behind the saloon seat backs



Chart table



The cushion under the chart table extends the length of the port side sofa, making a very long single berth

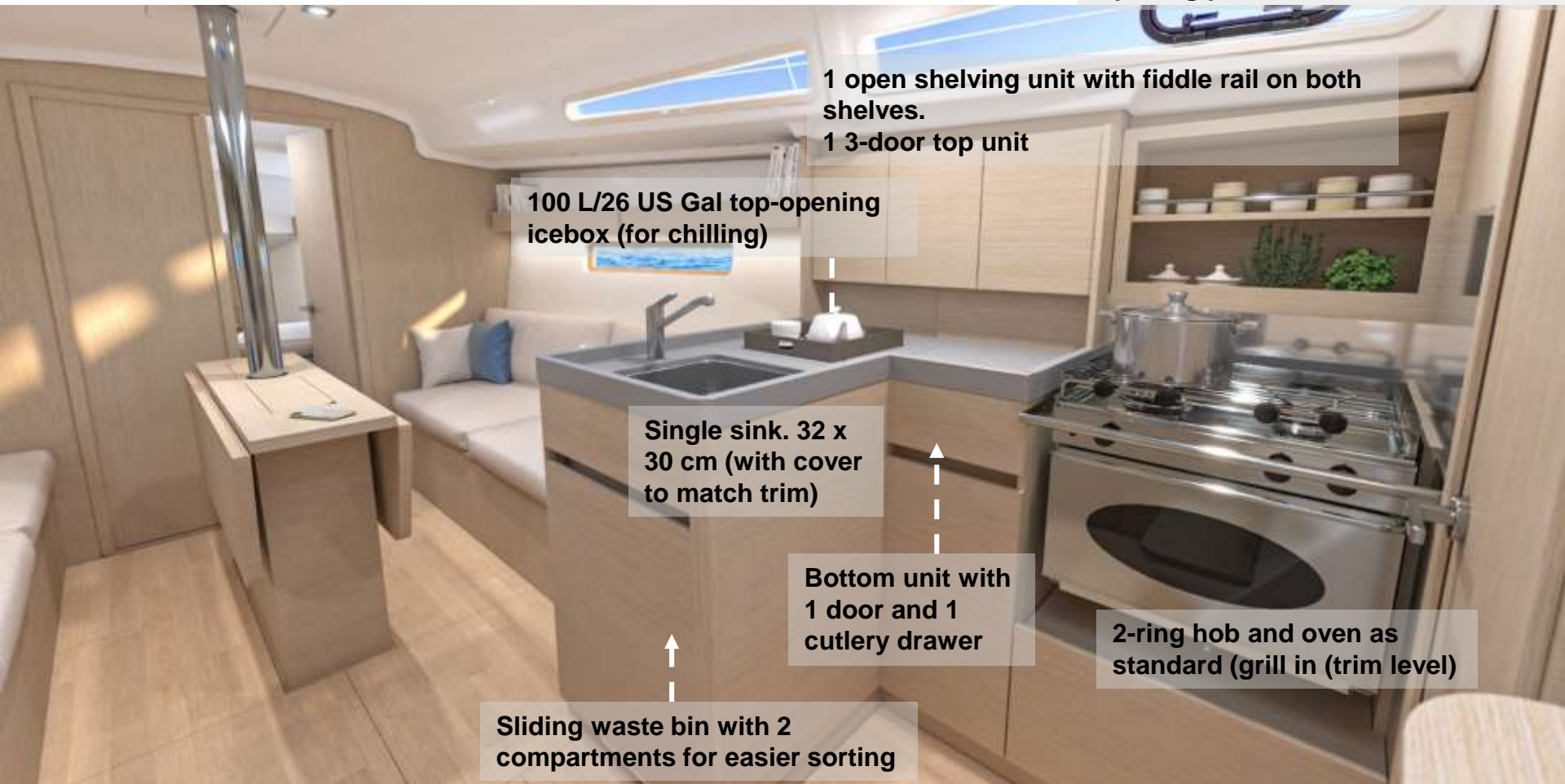
Oceanis 34.1

E -BOOK



Galley

Opening porthole above the hob.



1 open shelving unit with fiddle rail on both shelves.

1 3-door top unit

100 L/26 US Gal top-opening icebox (for chilling)

Single sink. 32 x 30 cm (with cover to match trim)

Bottom unit with 1 door and 1 cutlery drawer

2-ring hob and oven as standard (grill in (trim level))

Sliding waste bin with 2 compartments for easier sorting

Oceanis 34.1

E -BOOK



Forecabin



1 T44 deck hatch with fan and blind/mosquito net

Its double door gives a lovely feeling of space when opened to the saloon

Beige upholstery as standard

2 adjustable LED spotlights

1 double USB socket on either side of the bed (trim level)

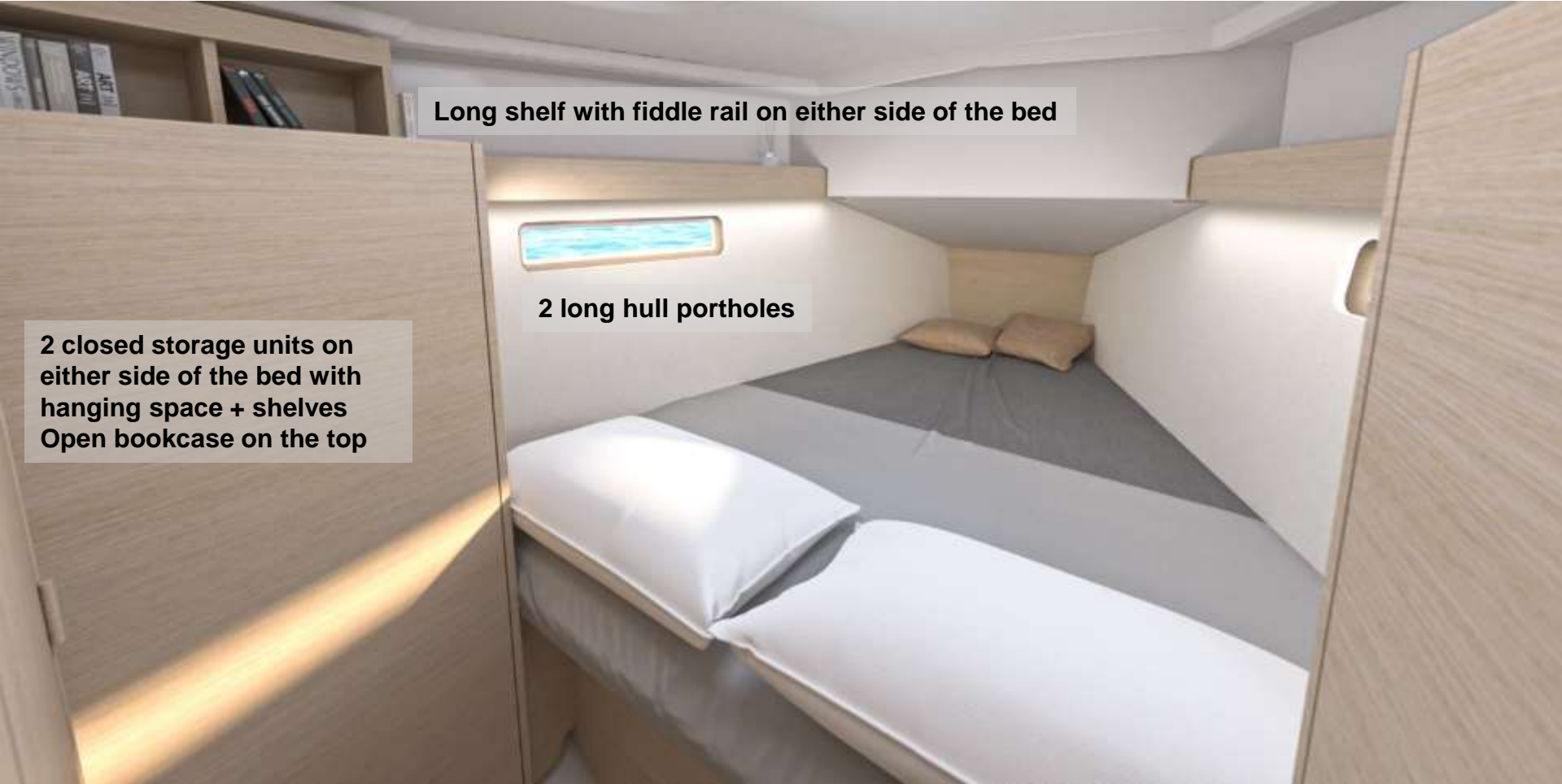
Spacious bed: (2.02 m x 1.60 m - 0.55 m / 6'8" x 5'3" - 1'10")

Oceanis 34.1

E -BOOK



Forecabin



Long shelf with fiddle rail on either side of the bed

2 long hull portholes

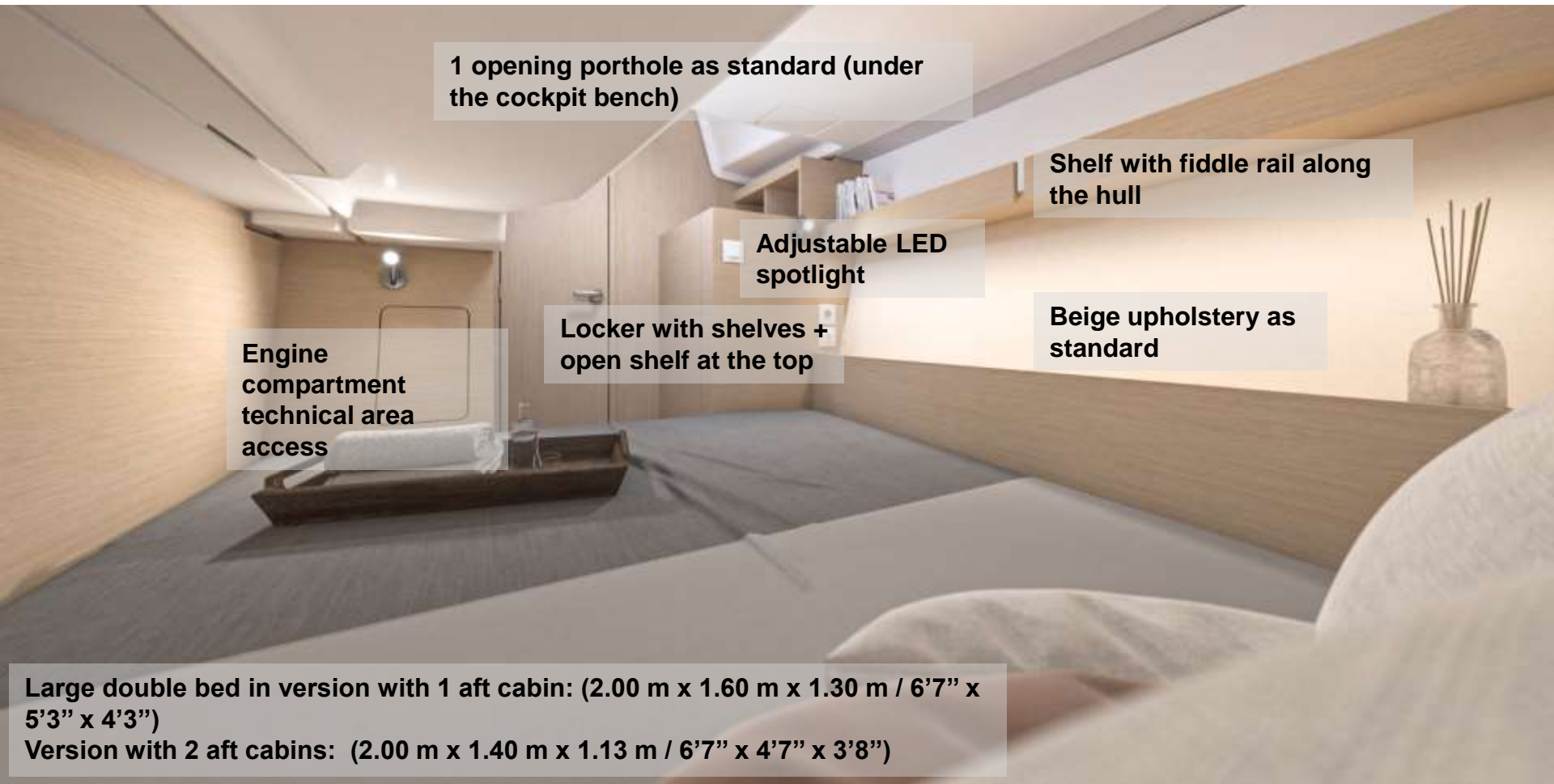
2 closed storage units on either side of the bed with hanging space + shelves
Open bookcase on the top

Oceanis 34.1

E -BOOK



Aft cabins



1 opening porthole as standard (under the cockpit bench)

Shelf with fiddle rail along the hull

Adjustable LED spotlight

Beige upholstery as standard

Engine compartment technical area access

Locker with shelves + open shelf at the top

Large double bed in version with 1 aft cabin: (2.00 m x 1.60 m x 1.30 m / 6'7" x 5'3" x 4'3")

Version with 2 aft cabins: (2.00 m x 1.40 m x 1.13 m / 6'7" x 4'7" x 3'8")

The background is a solid blue color with several large, overlapping, semi-transparent circular shapes in a lighter shade of blue. These shapes are positioned in the top-left and bottom-right corners, creating a sense of depth and movement. The word "Ambiance" is centered in the middle of the page in a white, sans-serif font.

Ambiance

WALNUT AMBIANCE - STANDARD



Clay worktop

Beige padding
(saloon and
cabins)

Néo 05
upholstery

Optional
wooden
steps

7gloss walnut
alpi

Rovere alevé laminated
flooring

Oceanis 34.1

E -BOOK



WALNUT AMBIANCE - STANDARD



Oceanis 34.1

E -BOOK



WALNUT AMBIANCE - STANDARD



Oceanis 34.1

E -BOOK



WALNUT AMBIANCE - STANDARD



WHITE OAK AMBIANCE - OPTION



Clay worktop

Beige padding
(saloon and
cabins)

Néo 05
upholstery

Optional
wooden
steps

7gloss white oak
alpi

Rovere alevé laminated
floor

Oceanis 34.1

E -BOOK



WHITE OAK AMBIANCE - OPTION



Oceanis 34.1

E -BOOK



WHITE OAK AMBIANCE - OPTION



Oceanis 34.1

E -BOOK



WHITE OAK AMBIANCE - OPTION



Oceanis 34.1

E -BOOK



WHITE OAK AMBIANCE - OPTION



AMBIANCE

Ambiance standard: Walnut

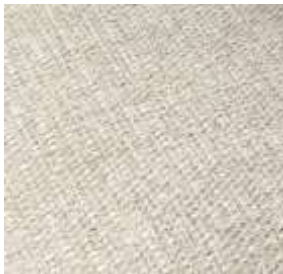
Walnut alpi



Rovere Alevé laminated floors



Interior upholstery
Néo 05



Padding
Beige



Ambiance option: White Oak

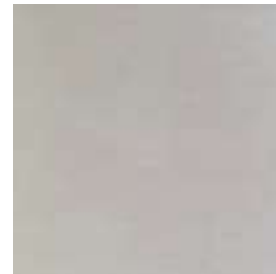
White Oak alpi



Rovere Alevé laminated floors



Padding
Macadamia



Brown oak laminated floors
(available only with white oak alpi)



AMBIANCE

Optional interior upholstery

PVC Marlin Weiss



Lounge Winner Silver
139



Optional padding (saloon and cabins)

Macadamia

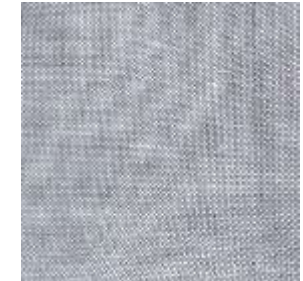


Outside

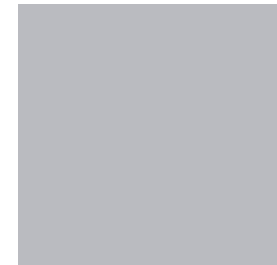
Protections
Cadet Grey



Upholstery:
Dolce 51



Pearl Grey Gel-coat
RAL 7004



2. Exterior dimensions

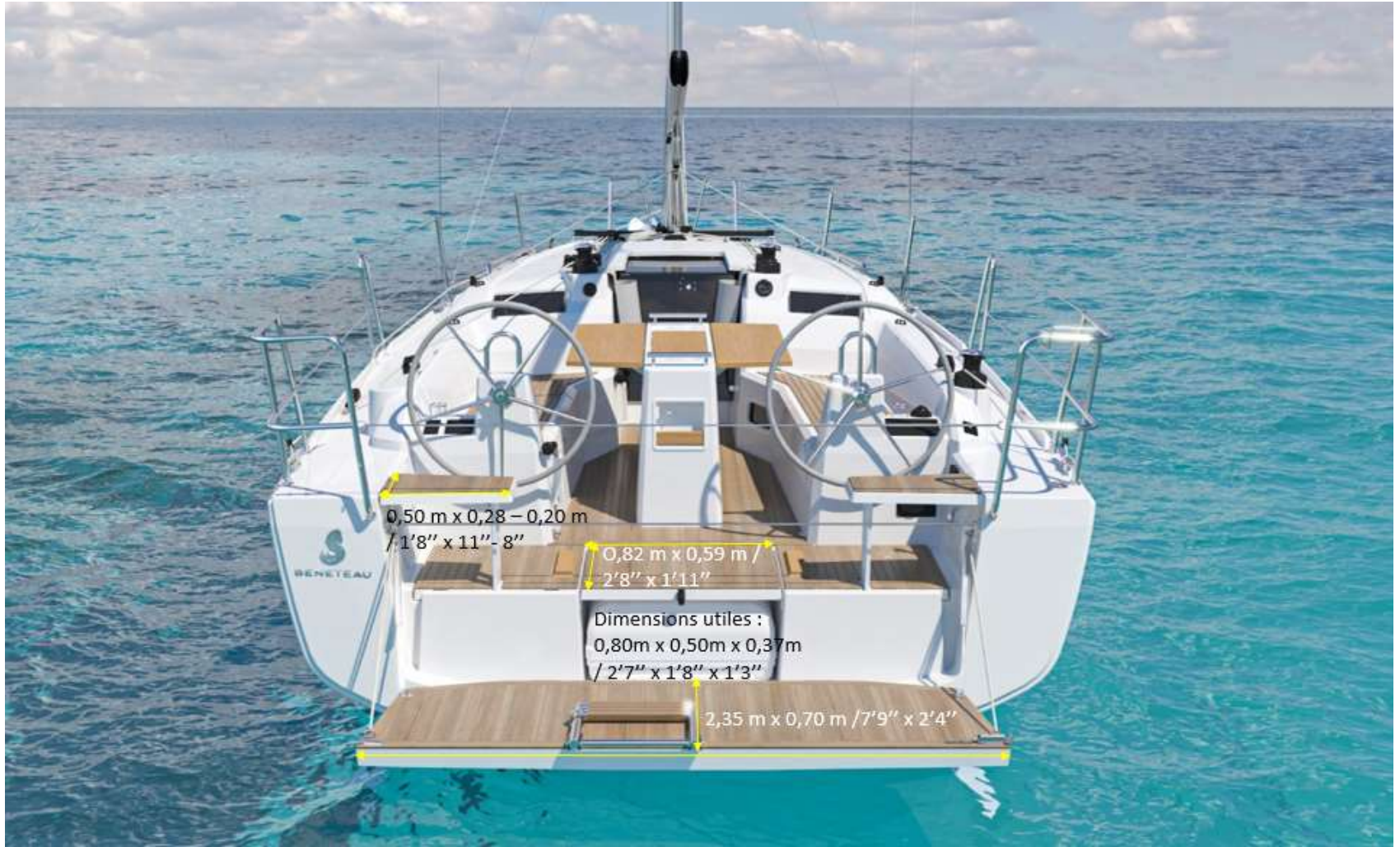
Oceanis 34.1

E -BOOK



Oceanis 34.1

E -BOOK



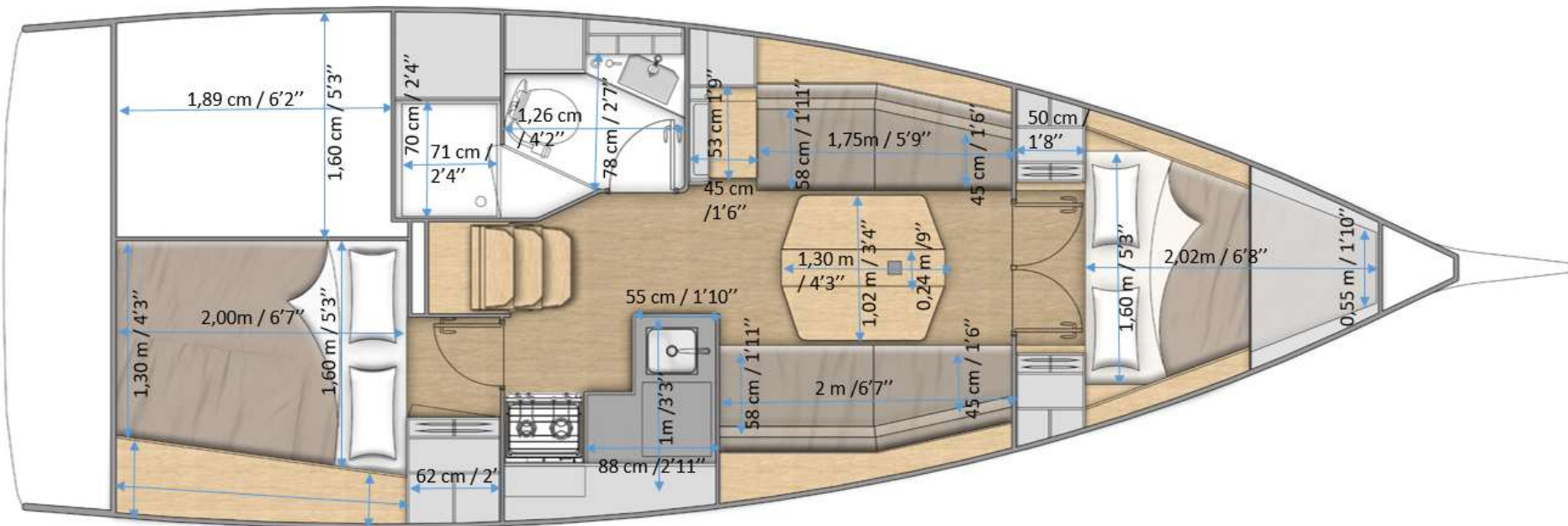
3. Interior dimensions

Oceanis 34.1

E-BOOK



2C1T

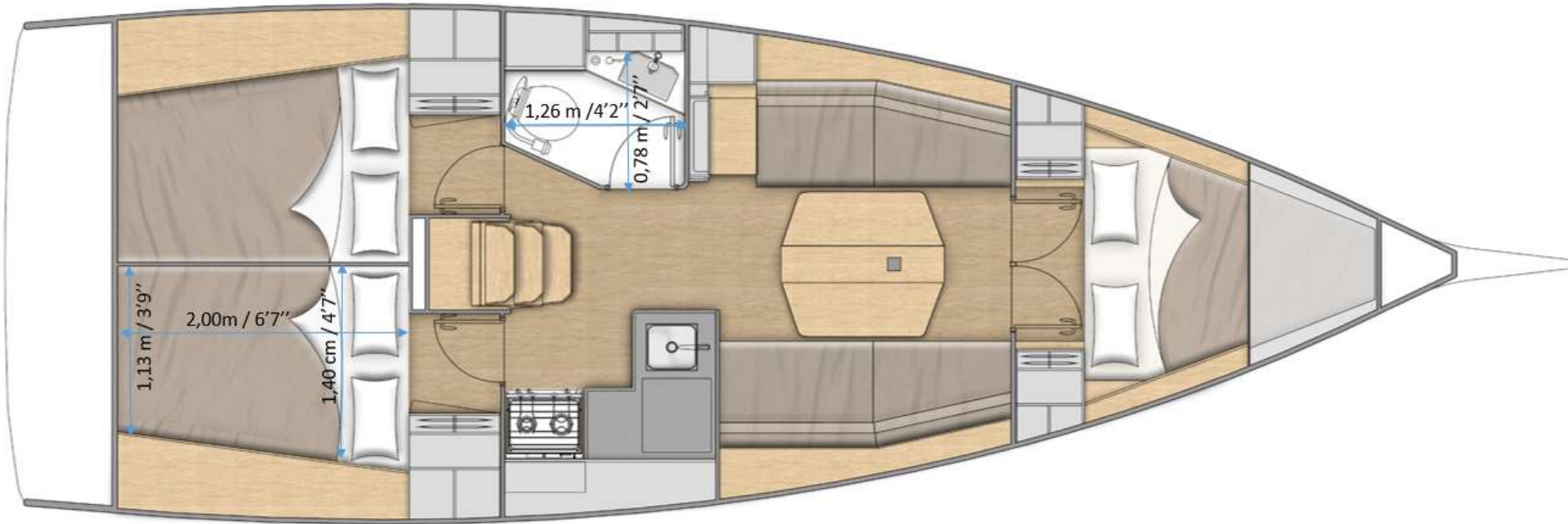


Oceanis 34.1

E -BOOK



3C1T



1,13 m / 3'9"

2,00m / 6'7"

1,40 m / 4'7"

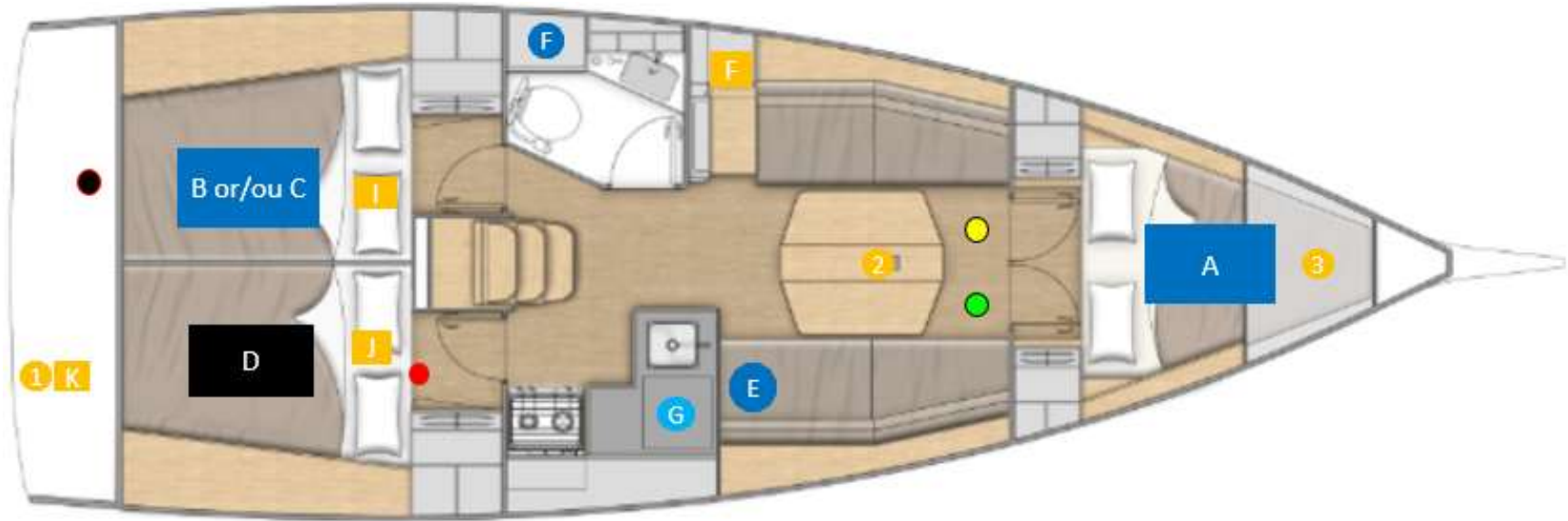
1,26 m / 4'2"

0,78 m / 2'7"

4. Location for technical equipments

Oceanis 34.1

E -BOOK

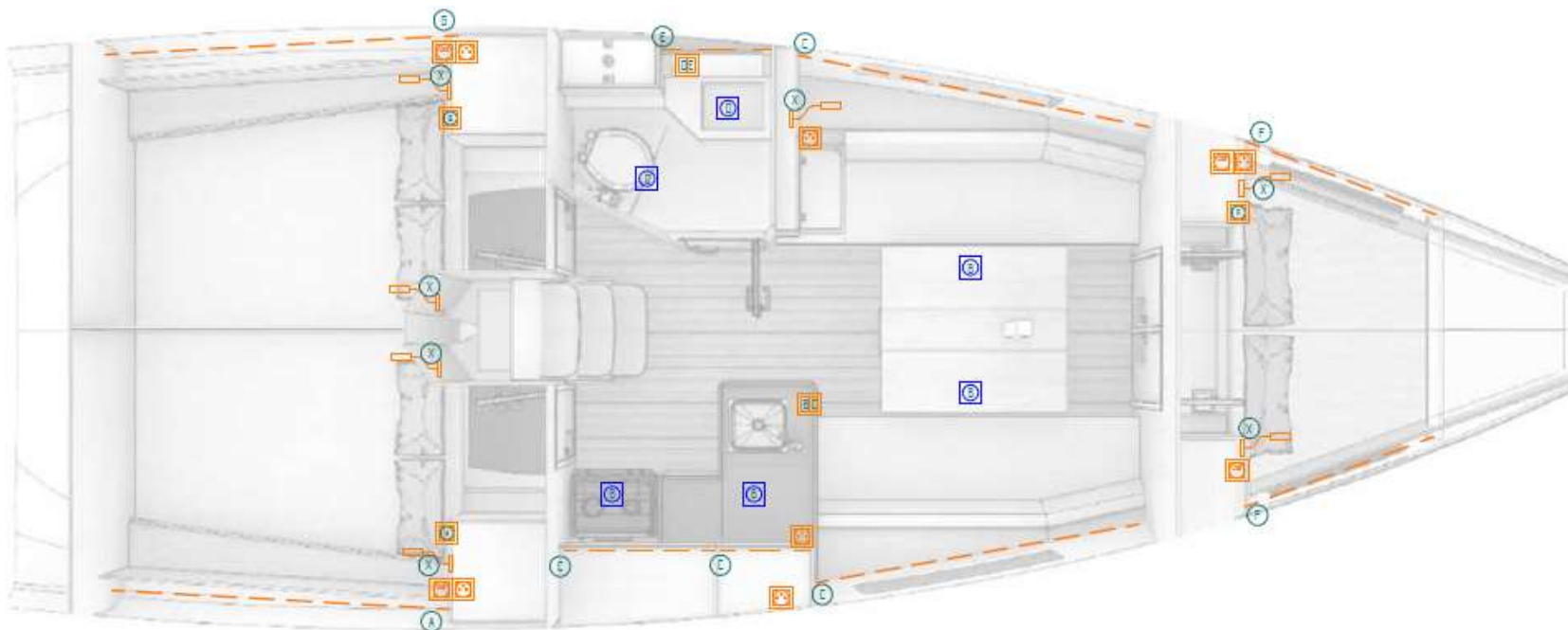




- A** Fresh water tank 206 L / 54 US Gal- Standard
- B** Extra Fresh water tank (130 L / 34 US Gal)- Option
- C** Grey water recovery tanks (130 L / 34 US Gal)- Option
- D** Fuel tank 130 L / 34 US Gal
- E** Water heater - 25 L / 7 US Gal
- F** Rigid blackwater tank 80L / 21 US Gal - standard

- G** Cool box 100 L / 26 US Gal top opening (Positive cold)
- H** 12V Electrical panel
- I** 2 AGM service batteries - 100 Ah –trim level
- J** 1 AGM engine battery– 50 Ah - standard
- K** 1 40Ah battery charger – trim level
- 1** 2 000 VA 12 V – 230 V Inverter- option
- 2** Bilge pump

- Battery breaker
- 3** Bow thruster- option
- Loch –speedo – Sensor- option
- Forward Scann sensor - option
- 5500 W boiler - option

Lights and sockets location / Implantation lumières et prises de courant



-  Ceiling light / Plafonnier
-  Led lighting garland / Guirlande Led

 Reading light / Liseuse

-  USB socket/ Prise USB
-  Prise 230V ou 115V / 230V or 115V socket