

Oceanis Yacht⁶⁰

E-BOOK



BENETEAU
AVANT-GARDE IN BOATING

Key Points

GENERAL SPECIFICATIONS *

• L.O.A	18,95m	62'2"
• Hull length	17,60m	57'9"
• L.W.L.	17,00m	55'9"
• Beam	5,25m	17'3"
• Standard draft (L-keel)	2,66m	8'9"
• Standard ballast weight (Cast iron)	5 010kg	11,042 lbs
• Shallow draught keel	2,20m	7'3"
• Weight of shallow draft keel (Cast iron)	5 650kg	12,453 lbs
• Air draft (excluding antennae)	24,44m	80'2"
• Performance air draught (excluding antennae)	26,44m	86'9"
• Light displacement	21 700kg	47,827 lbs
• Fuel capacity (standard)	500L	132 US Gal
• Fresh water capacity (standard)	860L	227 US Gal
• Engine power:		
- Propeller shaft	150 HP	150 HP

ARCHITECTS / DESIGNERS

- Naval Architect: BISCONTINI YACHT DESIGN
- Outside & interior design: LORENZO ARGENTO

EC CERTIFICATION *

- Category A - 10 people
- Category B - 14 people
- Category C - 14 people

STANDARD SAILS DIMENSIONS *

ALUMINUM MAST WITH IN-BUILT FURLER

• Furling mainsail	77,00m ²	829 sq/ft
• Self-tacking jib	62,00m ²	667 sq/ft
• Furling genoa (105 %)	75,00m ²	807 sq/ft
• Code 0	125,00m ²	1,345 sq/ft
• Asymmetric spinnaker	250,00m ²	2,690 sq/ft
• I	21,00m	68'11"
• J	7,02m	23'
• P	20,50m	67'3"
• E	7,50m	24'7"

PERFORMANCE CLASSICAL MAST, BLACK LACQUERED ALUMINIUM(+ 1,50M / 4'11")

• Performance version mainsail	98,00m ²	1,055 sq/ft
• Self-tacking jib	78,00m ²	840 sq/ft
• Furling genoa (105 %)	85,00m ²	915 sq/ft
• Code 0	140,00m ²	1,507 sq/ft
• Asymmetric spinnaker	270,00m ²	2,906 sq/ft
• I	22,50m	73'10"
• J	7,02m	23'
• P	22,00m	72'
• E	7,50m	24'7"

This **beautiful ocean-cruising yacht** immerses us in a world of elegance and sophistication.

Designed by Roberto Biscontini, the hull definitely attracts the eye: neat water inlets, discreet freeboard, elegant transom platform, moderately chined hull, etc. **a modern timelessly elegant profile.**

Despite being designed for easy sailing, there has been no concessions to performance, with hull power harnessed in the slightest breeze.

Entrusted to Lorenzo Argento, the interior is strongly marked by the world of large Yachts.

Designed for living on board with no concessions to comfort: spaces, storage, brightness, beauty of the woodwork and the materials selected. Each space was conceived with comfort on board in mind.





1. The cockpit is ideal for guests. It is well protected, far from manoeuvres, spacious and modular with cockpit tables converting to comfortable sun pads, with carefully designed upholstery made from good quality foam.

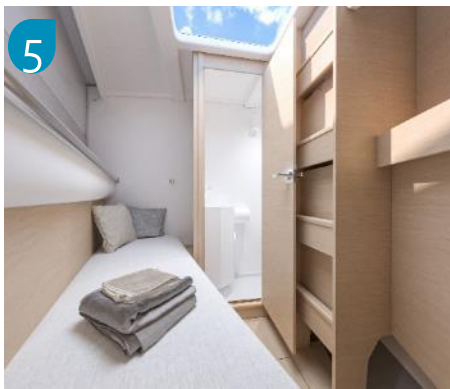
A selection of outdoor protection increases comfort, such as a semi-rigid Bimini top, which strengthens the identification with the world of Yachts.

2. Huge helm stations are designed to simplify the skipper's life, but also to make every sailing trip a unique experience. With safe access to the side decks from the stern, the boat's unique layout reinvents the central cockpit concept.

3. Spacious fore deck with the addition of a sun pad on the coachroof: a quiet living space, far from the cockpit, that will be popular at anchor.

4. When the platform is open it reveals a large tender garage which is an absolute must. It can hold a 2.8 m long jet-propelled tender. The winch and guiding roller system make for effortless launching and lifting, promising active stopovers and lots of fun.

5. The large skipper cabin designed for a crew of 2 people houses a shower room that is completely separate from the night space for greater comfort.





Instantly visible, you cannot miss the amount of space and light, and you will love the variety of social spaces:

1. A large saloon in which six people can sit comfortably, with an electrically operated table that can be lowered to create a large lounge space.
2. A long comfortable sofa facing the saloon, ideal for relaxing at sea or at anchor. The upholstery quality and trim level invite you to relax.
3. Ideal location for the chart table at the bottom of the companionway with a view of all the spaces. The owner has their own very comfortable space: curved chart table, rotating contoured leather seat – perfect when navigating.
4. The forward galley is full beam with 2 U-layouts: refrigeration to port and cooking to starboard close to the sink. There are lots of storage spaces on either side and the worktop surfaces are impressively long.



5. The owner cabin is designed for privacy and has large storage spaces. The bed is visible to starboard, only after passing the ensuite shower room, with large storage spaces along the full hull length. Detailed work on the linings creates depth and adds style. A luxurious and relaxing space.



An elegant and timeless yacht with a slender profile

Mainsail arch as standard: multi-functional equipment. Gets rid of lines lying about in the cockpit. Provides a support for outdoor protection. Is fitted with handrails on the side. LED lighting. The hallmarks of a Yacht

Designed for easy use:
aluminium furling mastn deck stepped, 2aft spreaders, ° self tacking jib as standard

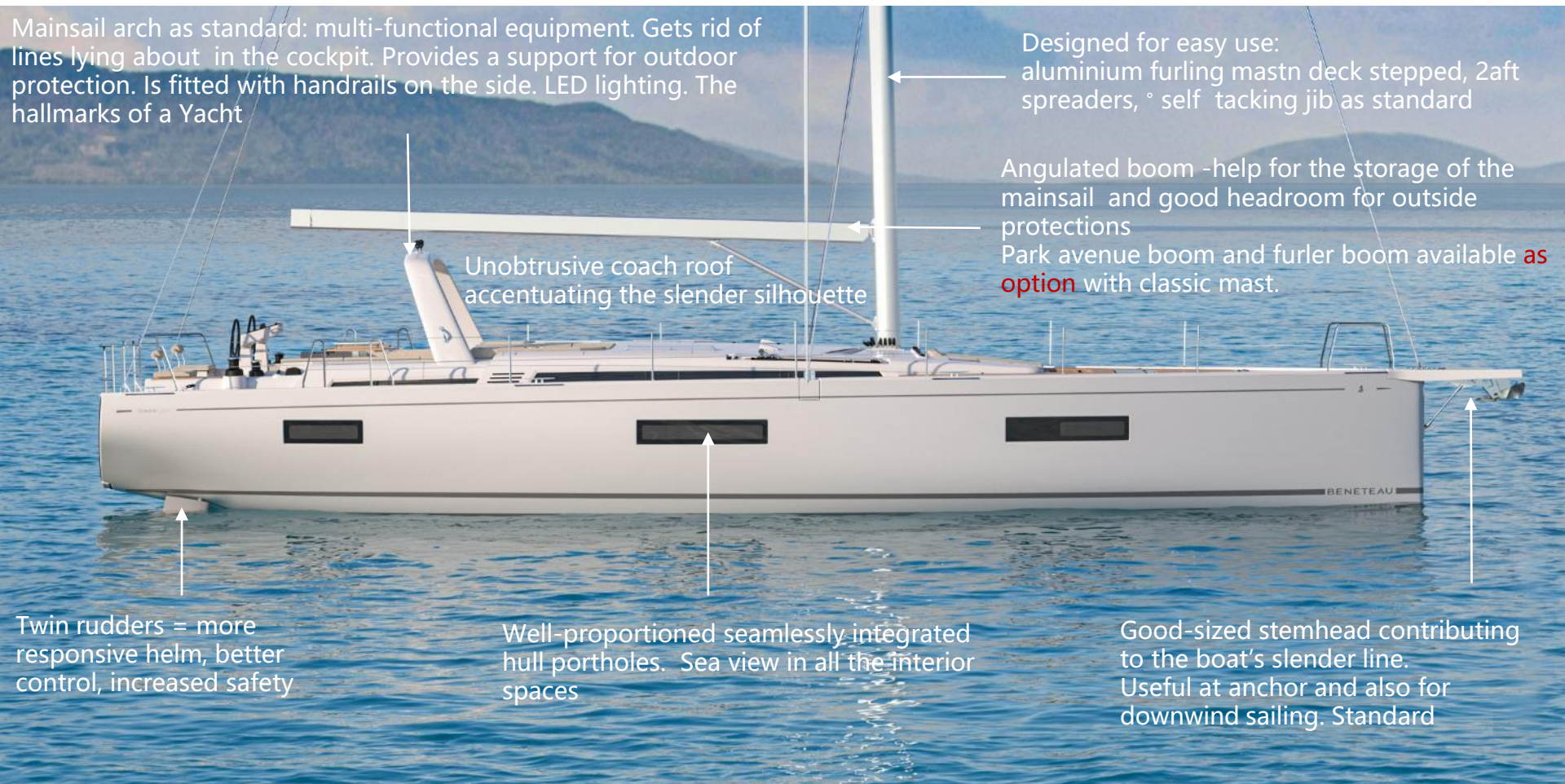
Angulated boom -help for the storage of the mainsail and good headroom for outside protections
Park avenue boom and furler boom available as **option** with classic mast.

Unobtrusive coach roof accentuating the slender silhouette

Twin rudders = more responsive helm, better control, increased safety

Well-proportioned seamlessly integrated hull portholes. Sea view in all the interior spaces

Good-sized stemhead contributing to the boat's slender line. Useful at anchor and also for downwind sailing. Standard





Portside winches:

- 1 electric manœuvre winch (H50.2 STAEH - 24 V). Standard
- 1 electric genoa winch (H70.2STAEH - 24 V). **Rigging Pack**

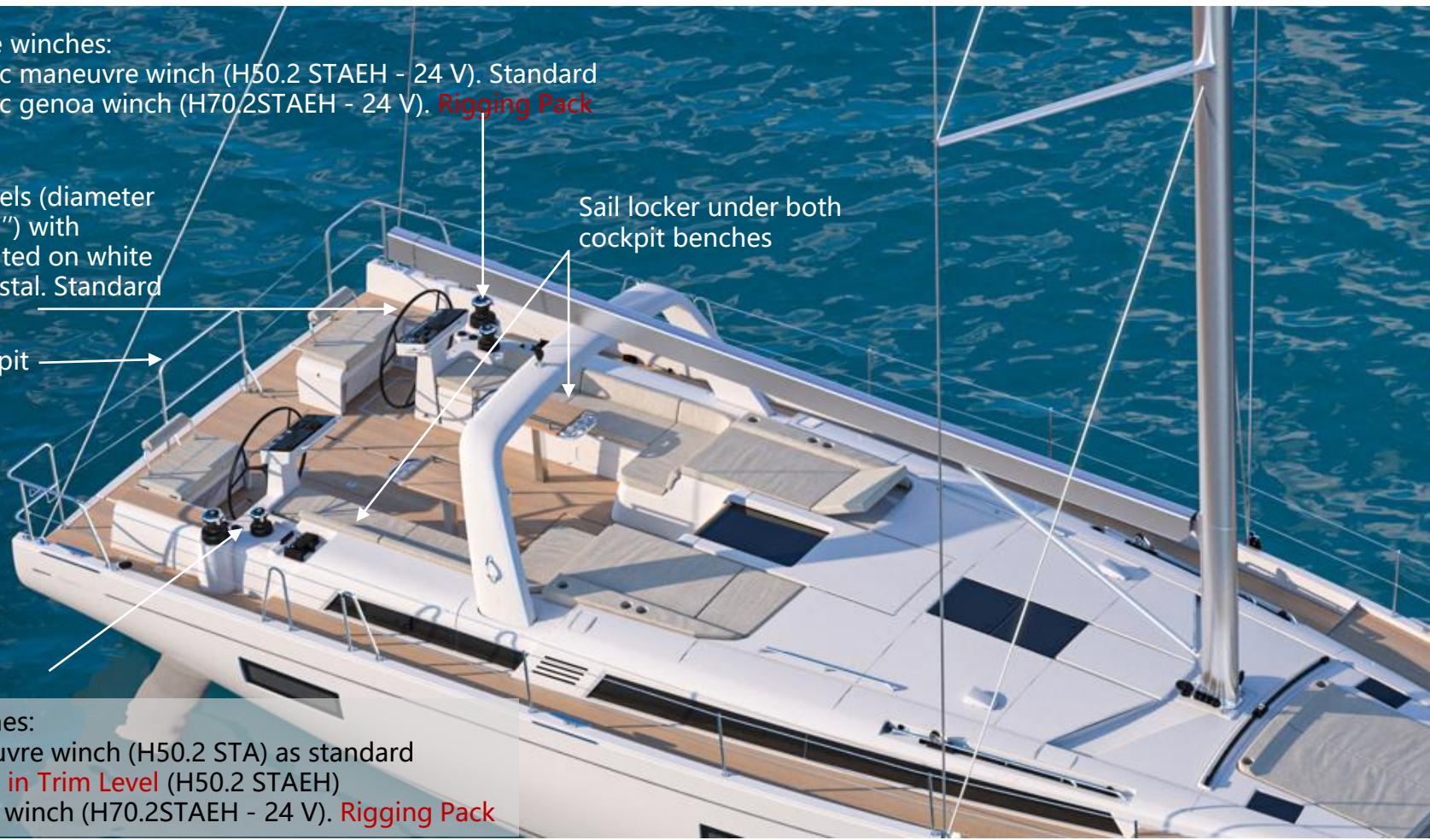
2 Steering wheels (diameter 1 100 mm / 3'7") with consoles mounted on white polyester pedestal. Standard

Sail locker under both cockpit benches

Protective pushpit

Starboard winches:

- 1 manual manœuvre winch (H50.2 STA) as standard
- electric upgrade in Trim Level** (H50.2 STAEH)
- 1 electric genoa winch (H70.2STAEH - 24 V). **Rigging Pack**



Unobtrusive latest generation consoles with space for an Axiom Pro12" display and commands for the engine, thruster, windlass, platform, lighting, etc.
Hand rail on the side

Raymarine electronic packs included in trim level
Coastal Pack in Comfort trim level
Offshore Pack in Luxe trim level

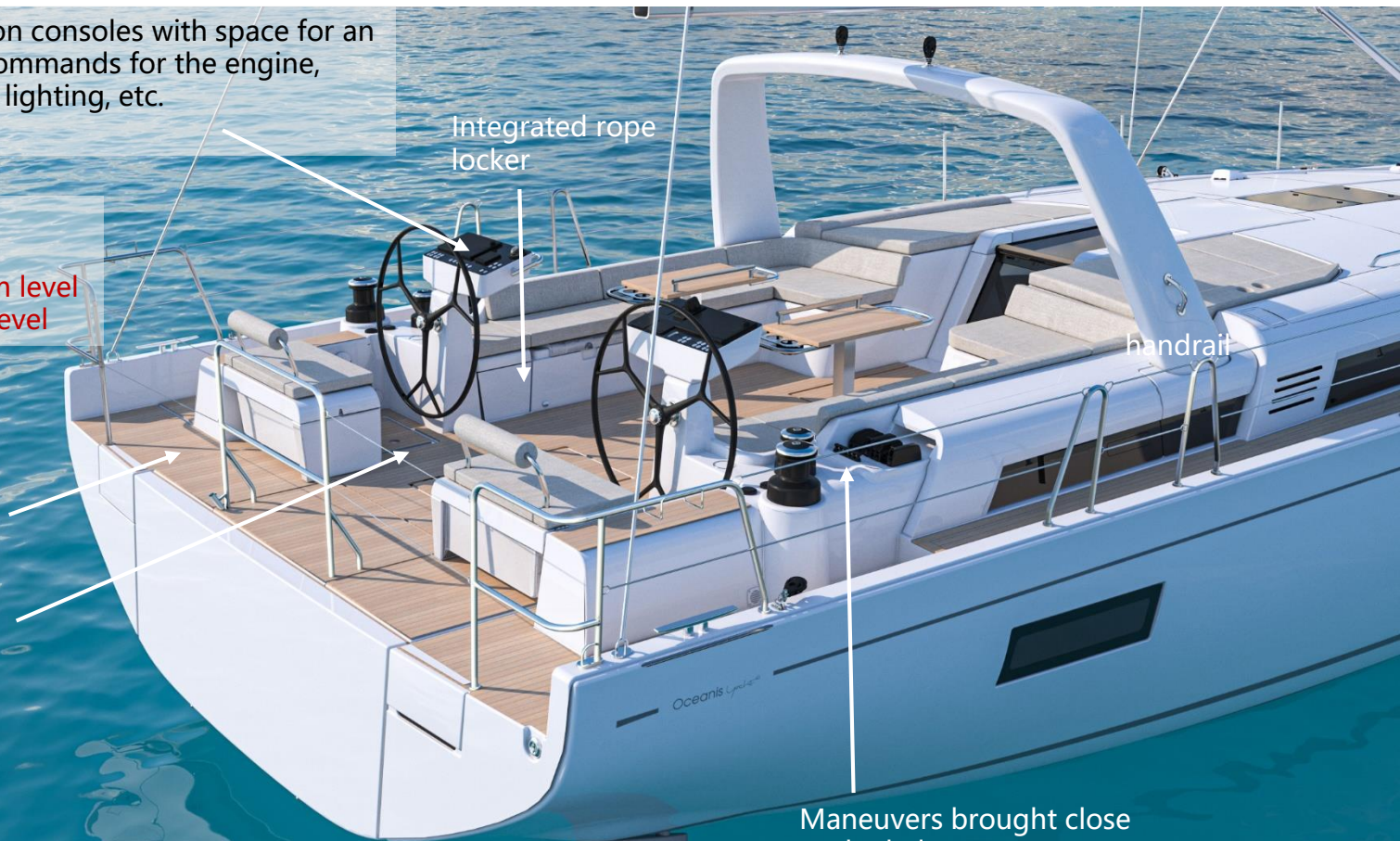
Large secured passage behind helmsman seat

Large foldable footrest.
Standard

Integrated rope locker

handrail

Maneuvers brought close to the helmsman



Cockpit Comfort

3 large relaxation areas: more than 4m of sunbathing on each side of the cockpit

Cockpit / helm seat / companionway and foredeck sunbathing: slatted teak as standard.

Diamante Snow upholstery included in Comfort trim level.

Dolce 51 upholstery available as an **option**



Trim level: electric legs for the 2 solid wood cockpit tables to convert the 2 cockpit benches into a large sunbathing area.



3 optional steering wheels:
Black composite Y-shaped
White composite - 5 spokes
Carbon Y-shaped

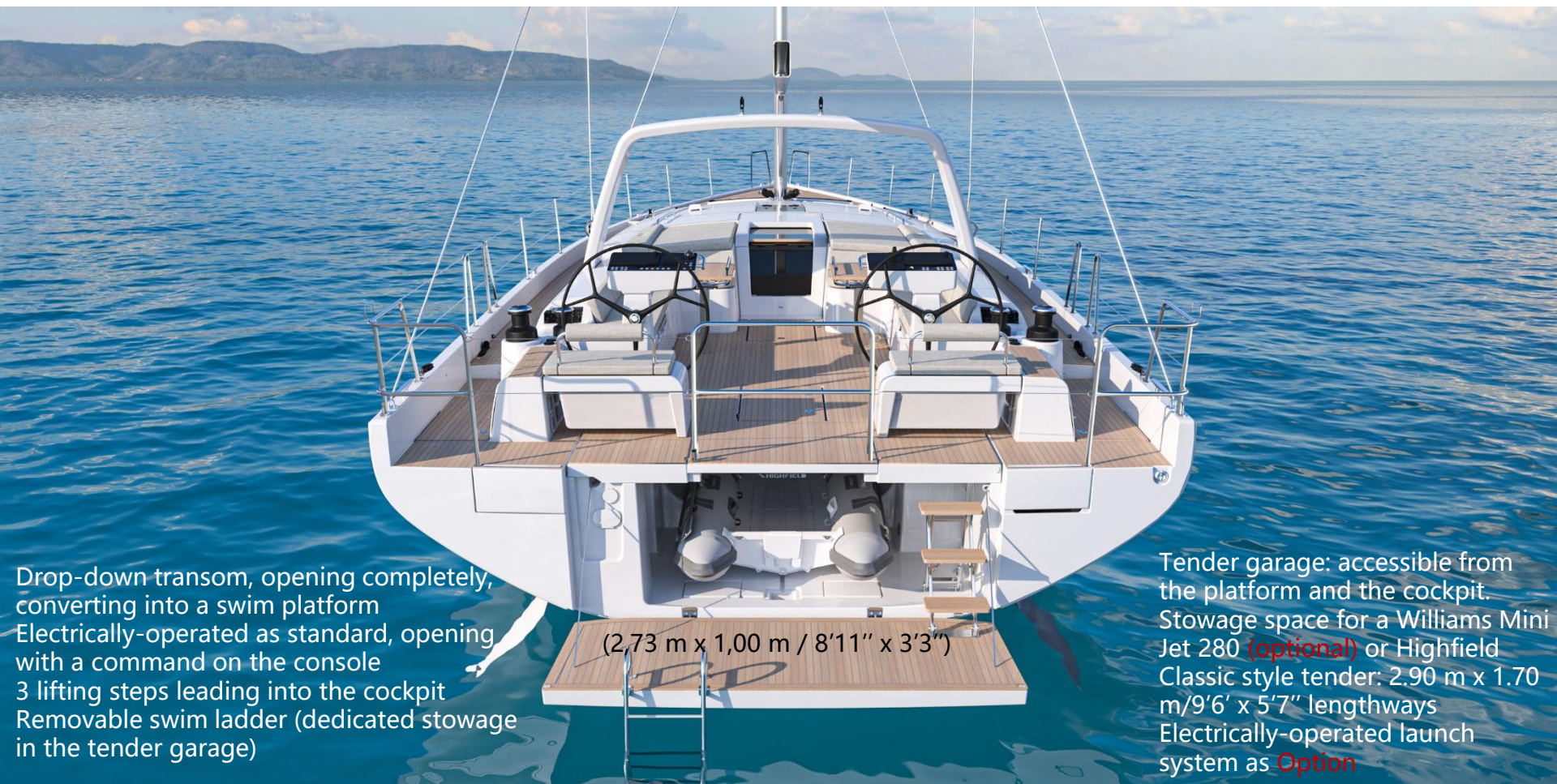
Storage under port seat or
30 L / 8 US Gal **optional**
cool box

Location for Integrated
hydraulic telescopic
gangway **(option)**

Liferaft locker in front of
companionway door

Acess to tender garage from
cockpit floor

Storage under starboard
seat or storage for
optional removable
cockpit gas grill



Drop-down transom, opening completely, converting into a swim platform
Electrically-operated as standard, opening with a command on the console
3 lifting steps leading into the cockpit
Removable swim ladder (dedicated stowage in the tender garage)

(2,73 m x 1,00 m / 8'11" x 3'3")

Tender garage: accessible from the platform and the cockpit.
Stowage space for a Williams Mini Jet 280 (optional) or Highfield Classic style tender: 2.90 m x 1.70 m / 9'6" x 5'7" lengthways
Electrically-operated launch system as Option

Perfect circulation: it has never been so easy to move about.

- Seamless access to the very wide side decks: marrying safety and simplicity.
- Completely seamless helm stations and cockpit
- The choice of 2 cockpit tables: on top of being able to propose 2 spaces that convert to twin sunbathing areas, they facilitate central circulation, with nothing hindering your path through the boat's interior, and they have a long hand rail.



Hand rails on: consoles, mainsail arch, cockpit tables, coachroof

Numerous choices for Charcoal Grey outside Protections

The semi-hardtop Bimini option boasts the following features:

The cockpit can be adapted to weather conditions in a flash. The central canvas is easy to fold and unfold manually, depending on the time of day and the amount of shade or sun required.

The rigid structure attached to the arch gives the boat the look of a Yacht. It is supported by 2 stainless steel feet close to the helm stations: large hand rails for moving to the front of the cockpit.

Long handrails along the full length for moving around outside the cockpit.



Coachroof sprayhood with removable rigid Lexan glazing

Also available :

- Cockpit bimini with LED lighting
- Batyline side sunshade for Bimini
- Full closure for bimini
- Sunshade on foredeck

Designed for living on board with no concessions to comfort: spaces, storage, brightness, beauty of the woodwork and the materials selected. Each space was conceived with comfort on board in mind.







Full width forward galley: plenty of storages, long worktops, very high level of standard appliances

Very comfortable sofa facing saloon, dedicated for relaxing moments

Central furniture with 2 drawers

Large C-shaped sofa, large table with wooden top, electric legs included in trim level that allows to create a spacious lounge area. Storages under seats

Owner's place near companionway: chart table/desk with comfortable DK02 Chocolat leather covered pivoting armchair

An interior that is a joy to live in



Head compartment for starboard aft cabin and for day use with 2nd access from saloon

12" electronic screen (option)
Audio with 2 Fusion interior
loudspeakers as standard

24V Electric panel:
easy access

Easy 5 steps companionway,
gentle sloop, 2 long handrails
with chocolat leather covered.



2 T44 opening
deck hatches with
blind/mosquito nets

Large windows in coamings with pleated blinds
2 integrated opening porthole on either side

24V Electric
panel. 7" screen
dedicated to ship
control

Hull portholes with integrated blinds

Armchairs not
available



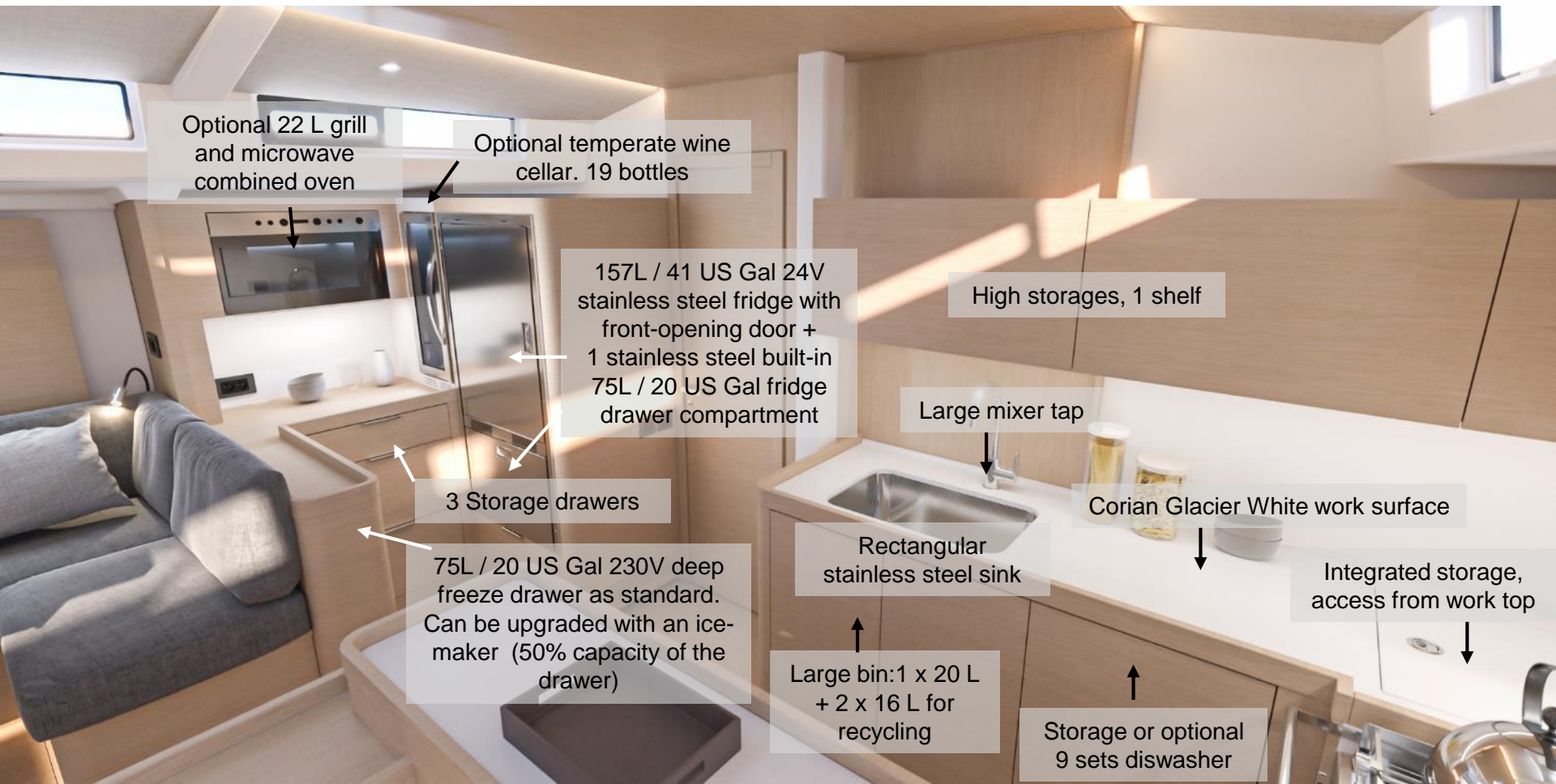
Indirect Led lighting under low furnitures / hull porthole / under companionway's steps / in the central part of the ceiling: enhance the high quality
woodwork

An interior that is a joy to live in

Four attractive distinctive areas

1. Saloon to port
2. Sofa to starboard
3. Chart table with a 180° view
4. Forward galley





Optional 22 L grill
and microwave
combined oven

Optional temperate wine
cellar. 19 bottles

157L / 41 US Gal 24V
stainless steel fridge with
front-opening door +
1 stainless steel built-in
75L / 20 US Gal fridge
drawer compartment

High storages, 1 shelf

Large mixer tap

Corian Glacier White work surface

Integrated storage,
access from work top

Rectangular
stainless steel sink

Large bin: 1 x 20 L
+ 2 x 16 L for
recycling

Storage or optional
9 sets dishwasher

3 Storage drawers

75L / 20 US Gal 230V deep
freeze drawer as standard.
Can be upgraded with an ice-
maker (50% capacity of the
drawer)



Extractor hood as standard

Storages under
work top

ENO Bretagne 3-ring gas
stove 19 L thermostatic
oven with grill

Large storage below the floor with
space for 18 bottles

Owner's area: studying for comfort and privacy

Privacy and storage take pride of place in the owner cabin.

The bed lies against the ensuite shower room bulkhead: the bed is located away from the saloon for significant sound insulation. It is not visible from the entrance to the cabin.



Hull portholes with
rigid sliding blind

Cabin perimeter with
padded grey lining

Hanging
locker

Starboard access provided for
access to berth

Spring mattress included in Trim level
Berth: 2.00 m x 1.60 m - 1.01 m / 6'9" x 5'3" - 3'4"

Large drawers all
along the port side

Owner's area: studying for comfort and privacy



An impressive amount of storage space

2 wardrobes

Several drawers along the hull

1 drawer under the side of the bed

1 storage space under the foot of the bed

Owner's area: studying for comfort and privacy

Lots of natural light:

4 T44 deck hatches with blinds/mosquito screens

1 T10 hatch at the entrance

2 hull portholes with rigid blinds

And when daylight diminishes, indirect LED lighting takes over to provide a relaxing atmosphere.

Positioned around the ceilings, the linings and under the bed



Optional TV wall mount pre-fitting, for a large screen

Beautiful moulded solid wood bed head, lined with padding on the inside for comfort

Owner's area: studying for comfort and privacy

Ensuite shower room at the cabin entrance:
Shower cubicle with wood seat, grating, and Plexiglas shower screen
Tecma electric toilet
Washbasin with Corian Glacier White worktop
2 door storage cabinet under washbasin
Large mirror with LED lighting along its full length
1 opening deck panel





A large amount of space, bright, airy, large berth

Hanging locker with
incorporated LED lighting
(accommodates washer
dryer **option**)

Opened storage
along the hull

Berth : 2,00 x 1,55 m / 6'7" x 5'1"

Mattress can be
separated

drawer under the bed



1 bunk beds cabin to portside with its own forward head compartment fitted with electric TECMA fresh/sea water toilet



The owner cabin to starboard: 1 double berth with nice head compartment including a separate shower area and an electric TECMA fresh/sea water toilet

! This layout is not compatible with the RH R4600 option: RA670 Apollo amplifier and P&W speakers in owner's cabin

Owner cabin



Lounge Greige 160 padding
upholstery along hull.

High locker
with shelves

Lounge Greige 160 bed head

Access to head
compartment

Berth:
1,99 x 1,52 - 1,02 m / 6'6" x 5' - 3'4"

Large drawer
under bed

Owner cabin



1 T44 deck panel in cabin
and head compartment
+
1 T10 deck panel at the
entrance of the cabin

← Location for pre wiring
TV (32"max) with
retractable bracket

Spring mattress included in Comfort trim level

← Location for optional
safe inside the wooden
furniture

Owner cabin



1 Bathroom cabinet - 1 door with mirror

Holding tank 64 L /
17 US Gal

Glacier White corian
work top with sink and
mixer tap

Standard Tecma fresh
water/seawater electric WC

Separate shower with plexiglass door -
Wooden retractable seat= extends the
area when folded
Wood on shower floor

Portside cabin : bunk beds + private head compartment



Lounge Greige 160 padding upholstery along hull and at the bed head..

Upper berth

1,99 m x 0,90 m- 0,45 m / 6'6" x 2'11"- 1'6"

Lower berth

1,99 m x 0,95 m- 0,68 m / 6'6" x 3'1"- 2'3"

Wooden furniture
with shelves

Port side cabine: privative head compartment



1 Bathroom cabinet - 1 door with mirror

Holding tank 64 L /
17 US Gal

Mixer tap with shower function

Access through T70 deck hatch

Headroom: 1,85 m / 6'1"

Upper bed:

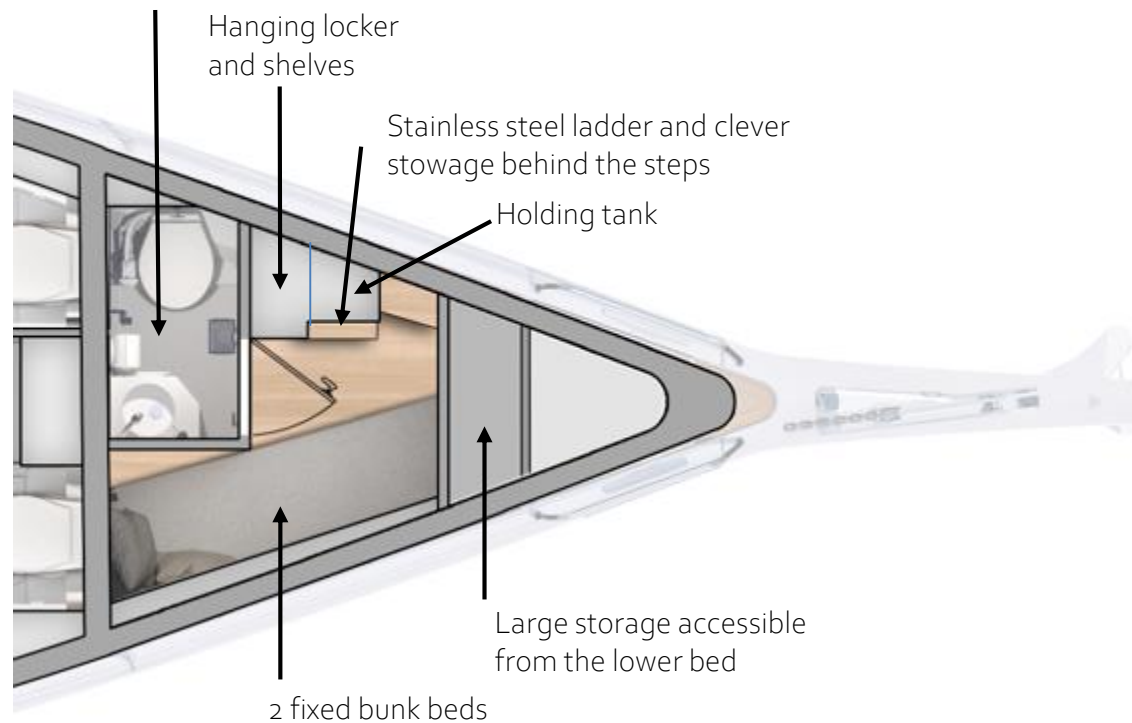
2,00 m x 0,58 m x 0,53 / 6'7" x 1'11" - 1'9"

Lower bed:

2,00 m x 0,61 m - 0,56 m / 6'7" x 2' - 1'10"

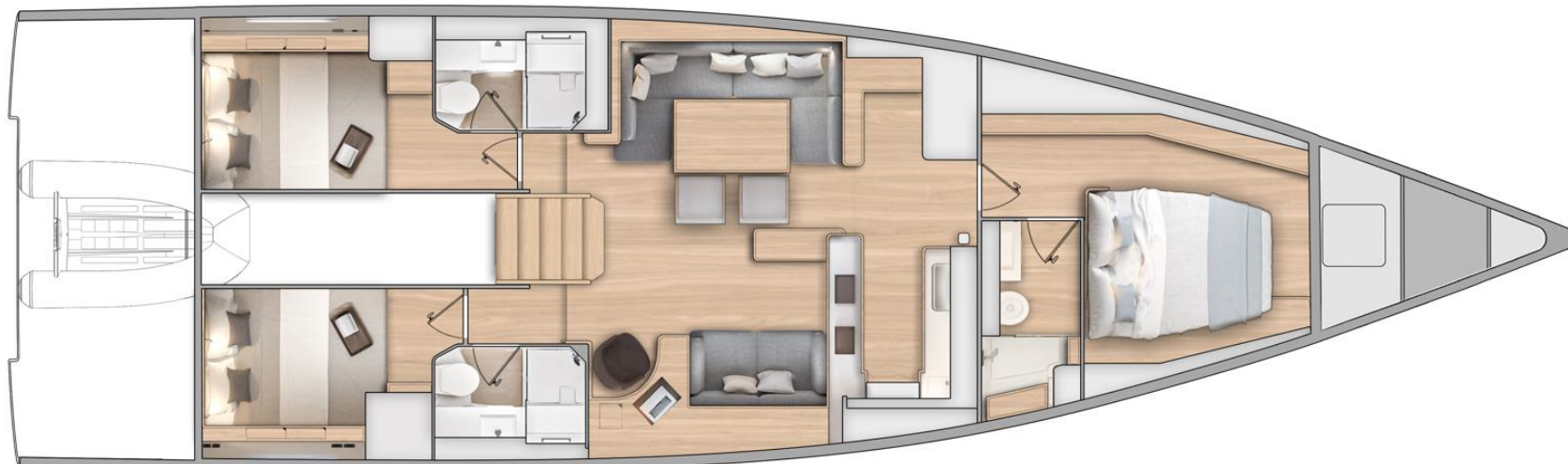
A real shower room completely separated from the berth space, for greater comfort for the crew

Shower room with shower,
manual toilet and washbasin.



Offered layouts

3C3H



4C4H + skipper cabin



The background is a solid blue color. In the top-left corner, there are several overlapping, curved, light-blue shapes that resemble stylized waves or the edge of a circle. In the bottom-right corner, there is a single, larger, light-blue curved shape, also resembling a stylized wave or a partial circle.

Ambiance

Outside Upholstery – Protections

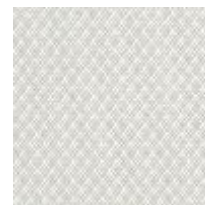
60			
Exterior upholstery	Cockpit seats and backrests - sunbeds on each side of companionway – helm seat backrest	<i>Diamante snow</i>	✓
		<i>Dolce 51</i>	✓
Outside protections	Sprayhood	<i>Charcoal Grey</i>	✓
	Semi rigid Bimini withsliding canvas		✓
	Cockpit bimini		✓
	Side Sunshades for bimini (Batyline)		✓
	Bimini Closure		✓
	Forward Sunshade		✓

Hull colour

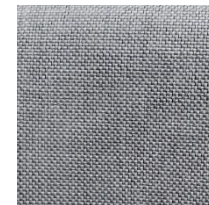
60		
Hull colour	White gel coat + hull decorated in metallic grey	✓
	Light paint + hull decorated in metallic grey or dark paint + hull decorated in pearl white	✓

Covers – Lazy Bag

60			
Covers	Cockpit table	<i>Charcoal Grey</i>	✓
	Wheels		✓
Lazy Bag	Natural		✓



Diamante Snow



Dolce 51



Charcoal Grey

Hull Paint





Standard

Standard Walnut alpi + Oak Alpikord floors + Lounge Greige 160 upholstery



Option

3 gloss oak alpi + Oak alpikord floors + optional Lounge Mèga Rabbit 160 upholstery

Wood & Floor

		60
Standard ambiance	Walnut alpi + Oak Alpikord floors	✓
Optional ambiance	3 gloss oak alpi + Oak alpikord floors	✓

✓ = standard ✓ = option

INTERIOR UPHOLSTERY

		60
Interior upholstery	Lounge Greige 160	✓
	Lounge Falcon 162	✓
	Lounge Méga Rabbit 160	✓
Covering on handrails	Leather Brown DK02	✓

		60
Leather	DK 45 (Taupe)	✓
Nubuck	LG 13 (chocolat)	✓
Ultraleather	Pelican 291-5676	✓
	Stone 291-3602	✓

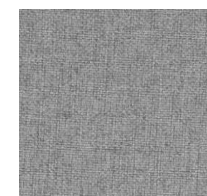
✓ = standard ✓ = option



Lounge Greige 160
Standard



Lounge Falcon 162



Lounge Méga
Rabbit 160



DK 45 (taupe)



LG 13 (chocolat)



Pelican 291-5676



Stone 291-3602

The background is a solid blue color. In the top-left corner, there are several overlapping, semi-transparent, curved shapes in lighter shades of blue, resembling stylized waves or abstract patterns. In the bottom-right corner, there is a single, larger, semi-transparent curved shape, also in a lighter shade of blue, which appears to be part of a larger abstract design.

The latest innovations for Easy Sailing



SEANAPPS: connected boat as standard

"SEANAPPS" smart technology:

For monitoring the boat's status and receiving alerts as well as maintenance advice via the associated mobile application.

The type of information collected varies according to the boat's configuration: safety indicators (GPS position, battery status, bilge level, engine condition), navigation data (distance covered, speeds, depth), and comfort information (tank level, cabin temperature and humidity).

Many possible applications dedicated to dealers and an opportunity to develop a new approach to customer relations

seanapps

CONNECT YOUR BOAT **FREE YOUR MIND**

seanapps

WHAT IS seanapps ?

It is a boat equipped with a telematics package

SECURITY

- GPS location
- Engine hours
- Battery state
- Bilge pump

NAVIGATION

- Depth
- Wind speed
- Average speed
- Maximum speed
- Mileage

COMFORT

- Fuel level
- Tank level
- Cabin humidity
- Cabin temperature



Equipped as standard on new boats

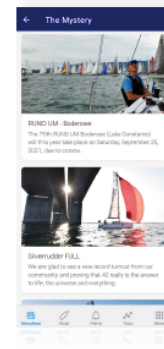
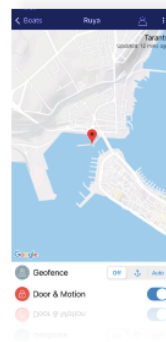
Included in the prices of the boats

or

Retrofitted on used boats

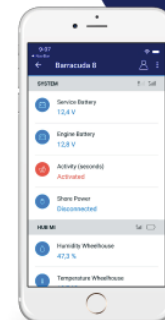
available via the Spare Parts channel

Compatibility | All types of boats
| All generations



... CONNECTED TO YOUR CLIENTS

- Remote monitoring
- Alerts & reminders
- News feed
- Navigation book
- Maintenance book
- Manuals & owner files



First year
= free
Annual renewal
180€ exc-vat

... AND TO YOUR BUSINESS

Fleet view (manager)

- Dashboard (maintenance, handovers)
- Real time monitoring
- Ticketing tool for the workshop

Operational view

- Technical logbook of each boat
- Task allocation to the technical team
- Intervention report



Annual license
Mandatory from
January 2022
(SAAS)

06



A USEFUL AND USER-FRIENDLY INTERFACE TO HAVE ALL THE KEY FEATURES OF THE BOAT AT YOUR FINGERTIPS

Ship Control can be accessed via the boat's navigation screen or a tablet connected to the boat's Wi-Fi router and it unites all the functions onboard on the same web interface. Completely secure, this system is based on multiplexing and has been present on racing boats for a number of years.

COMPREHENSIVE AND USER-FRIENDLY

The main electronic functions on board are displayed as pictograms on the home screen. A quick tap on the icon you want and you can manage the lights, air-conditioning, Hi-Fi, electrical sources (AC), bilge pumps or a page dedicated to navigation. It also controls the battery and fluid levels, and gives an overview of the engine gauges. With instant and ergonomic access to this data, you feel considerably more in control of your boat.

A CLEAR ADVANTAGE

Ship Control interface is a built-in onboard computer. It assists with navigation and life on board. Since you can connect several tablets to this interface, each member of the crew can access all the available functions from wherever he is on the boat.

The background is a solid blue color. In the top-left corner, there are several overlapping, semi-transparent light blue curved shapes that resemble stylized waves or the edge of a circle. In the bottom-right corner, there is a similar light blue curved shape, also semi-transparent, with a small dark blue line segment extending from it.

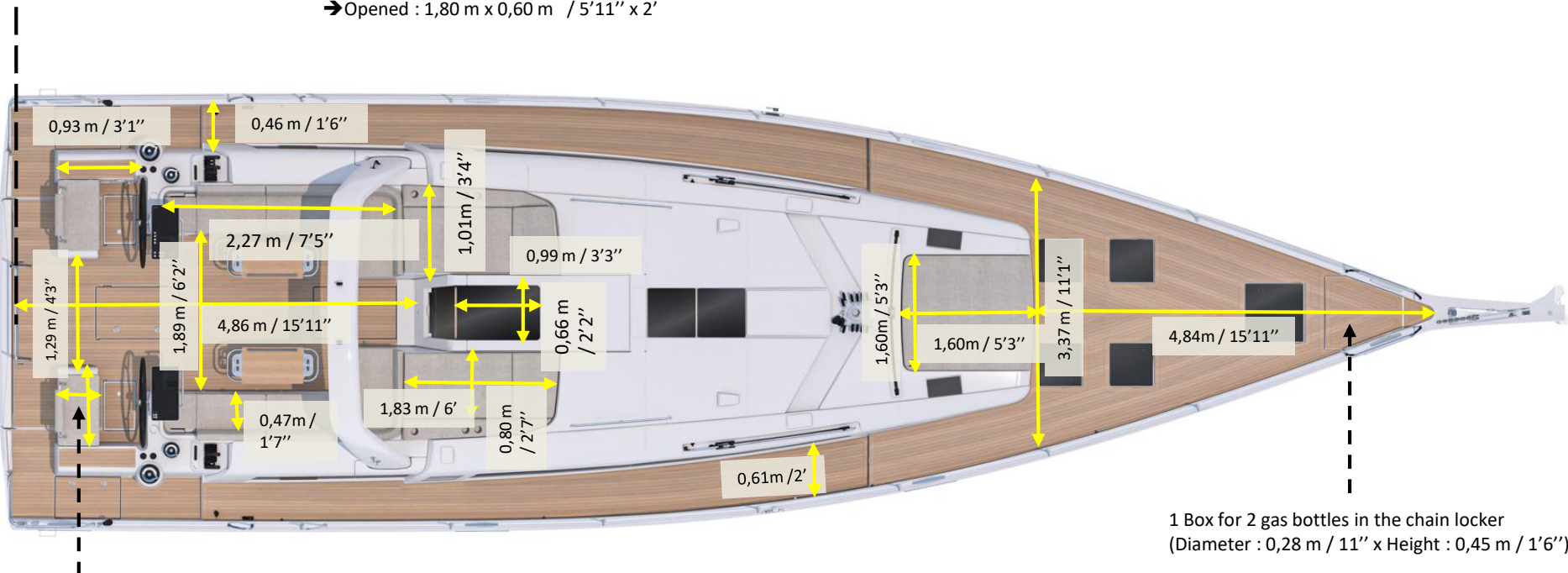
Outside dimensions

Aft paltform:
2,70 m x 1m / 8'10" x 3'3"

Cockpit table dimensions

➔Folded : 0,90 m x 0,60 m / 2;11" x 2'

➔Opened : 1,80 m x 0,60 m / 5'11" x 2'



Helm seat:
0,94 x 0,47 / 3'1" x 1'7"

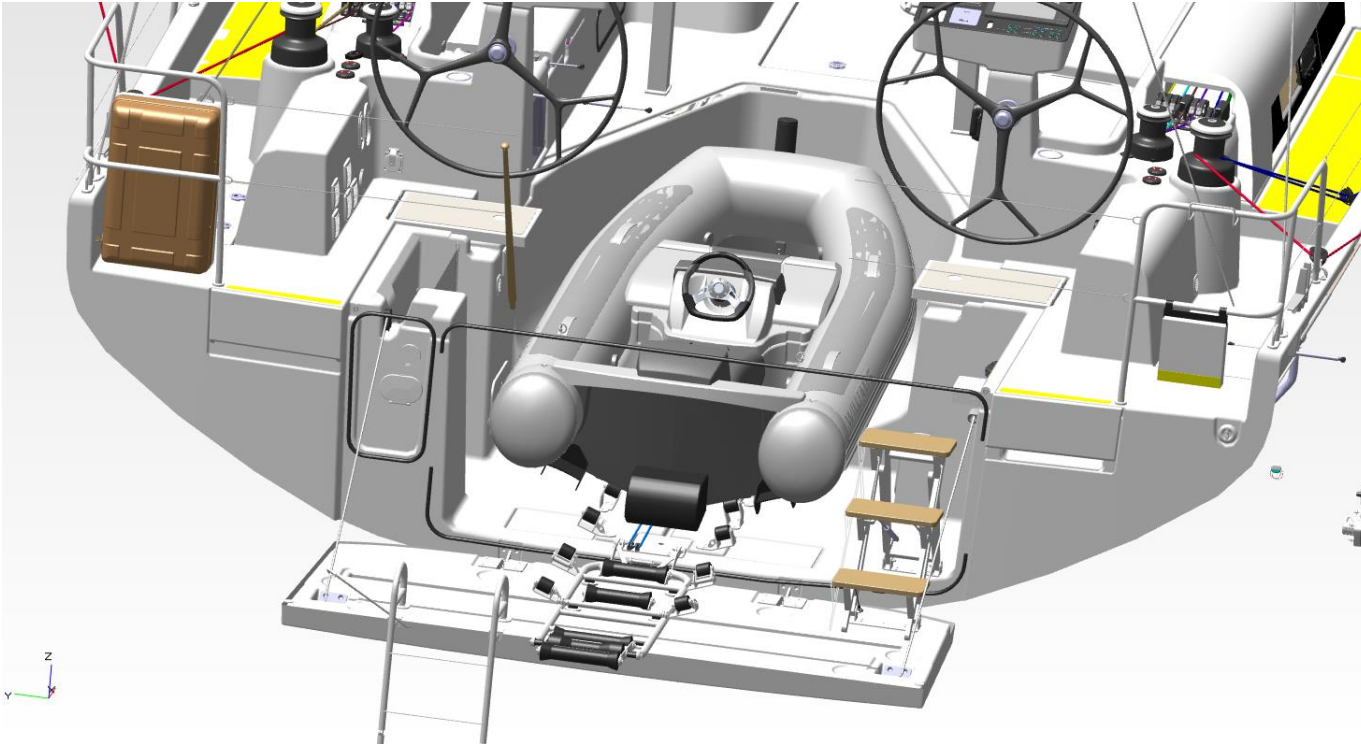
1 Box for 2 gas bottles in the chain locker
(Diameter : 0,28 m / 11" x Height : 0,45 m / 1'6")

Dinghy garage dimensions

Max. tender length : 2,90m / 9'6"

Allows to store:

- Minijet 280 tender (2,48m x 1,69m x 0,80m / 8'2" x 5'7" x 2'7")
- Or / ou Highfield classic: 2,90m x 1,70m / 9'6" x 5'7"



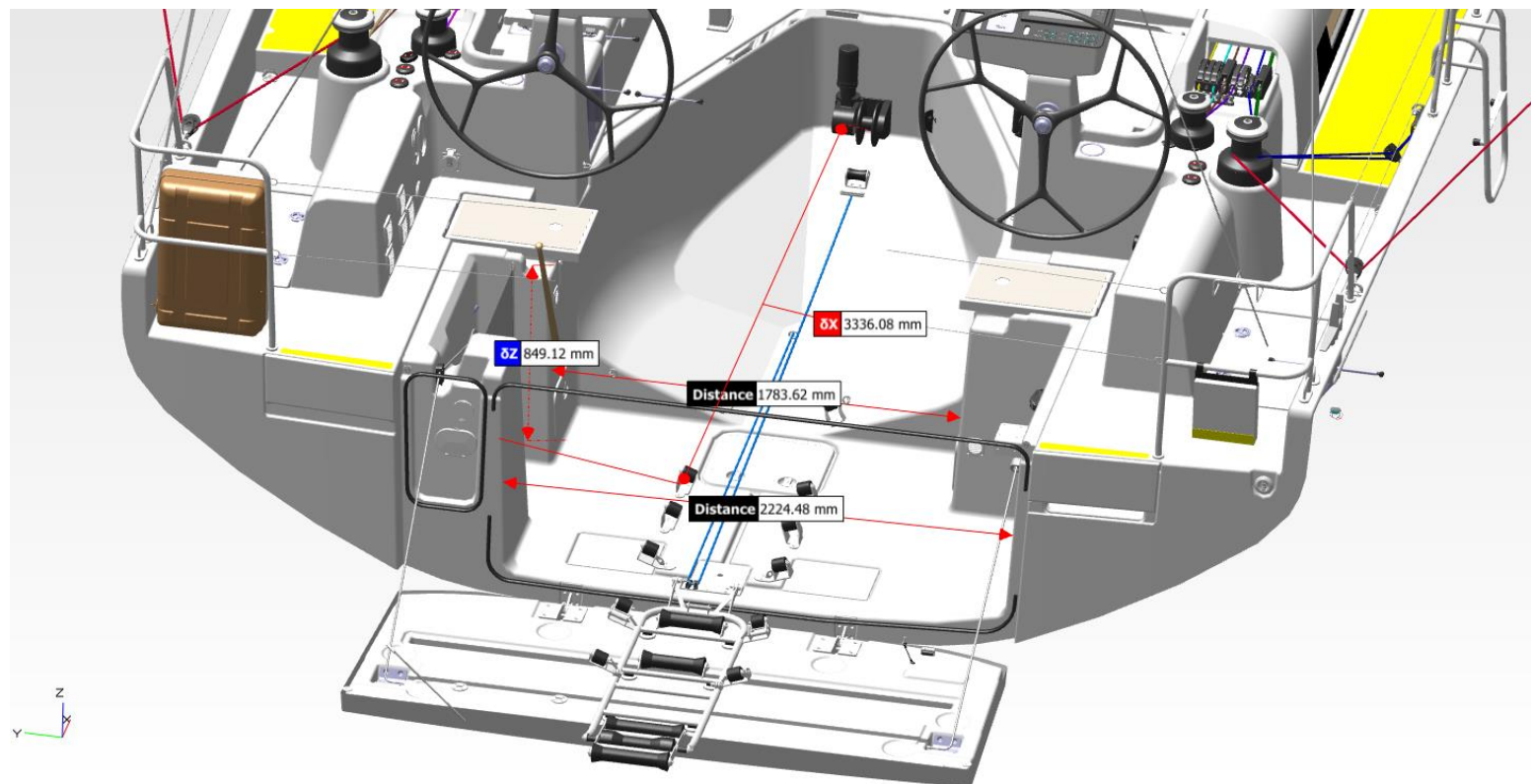
Dinghy garage dimensions:

Width at the entrance = 2,22 m / 7'4"

Dinghy passage width = 1,78 m / 5'10"

Length between the door and the front of the winch = 3,33 m / 10'11"

Garage height = 0,849 m / 2'9"

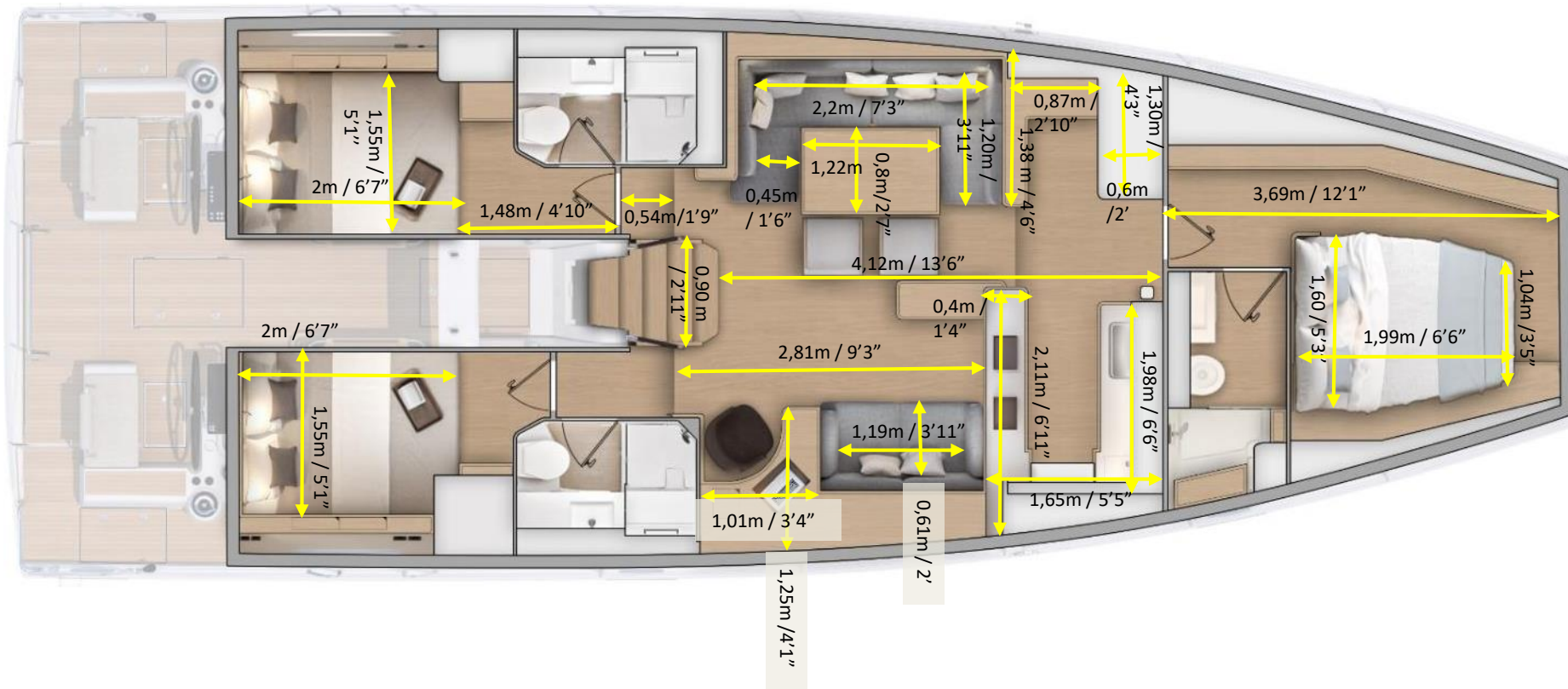


The background is a solid blue color with several large, overlapping, curved shapes in a lighter shade of blue, creating a modern, abstract design.

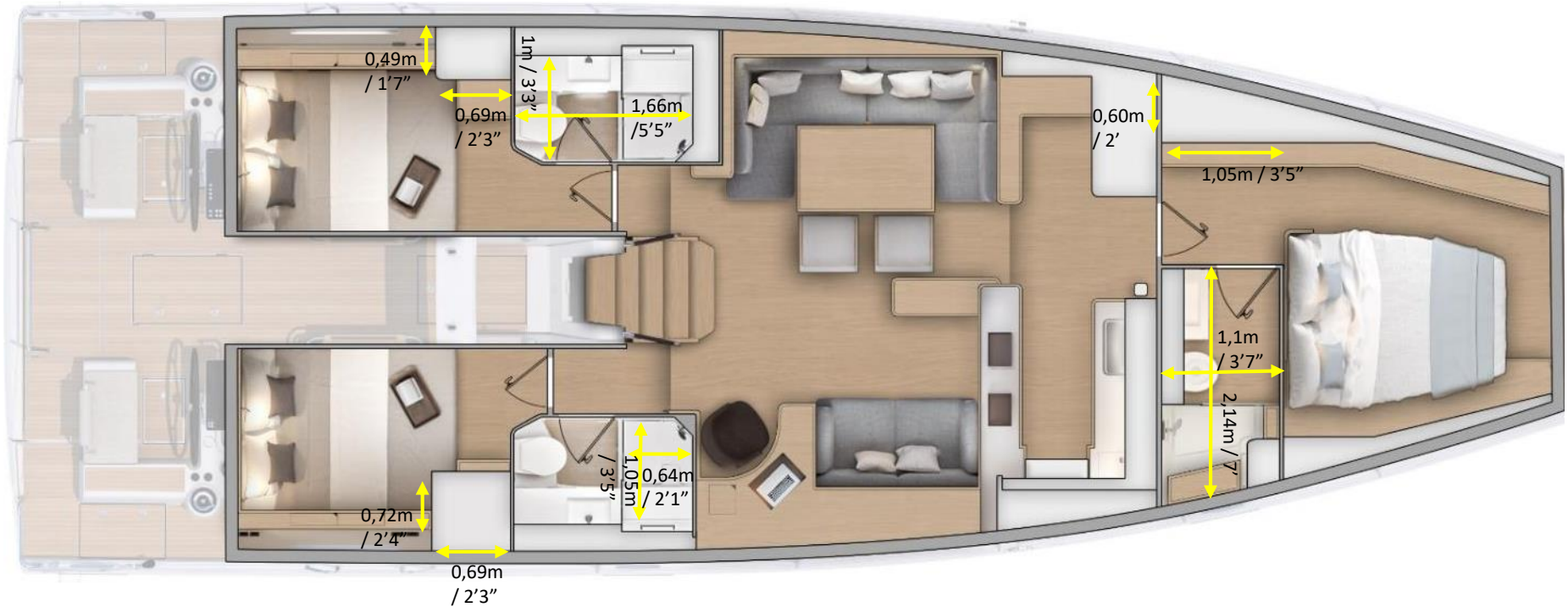
Interior dimensions & Headrooms

3 cabins 3 heads version

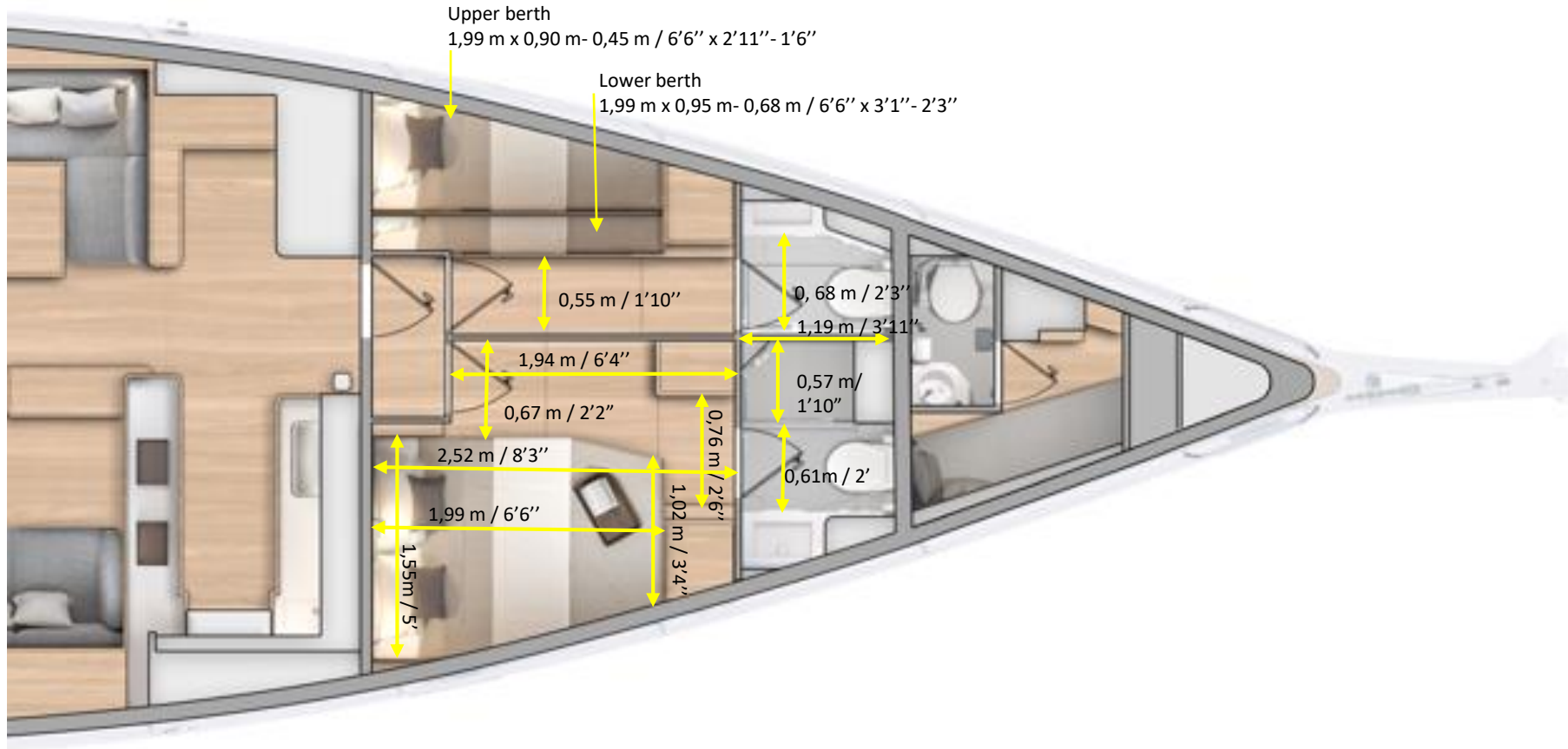
Useful dimensions for seat length
(backrest not included).

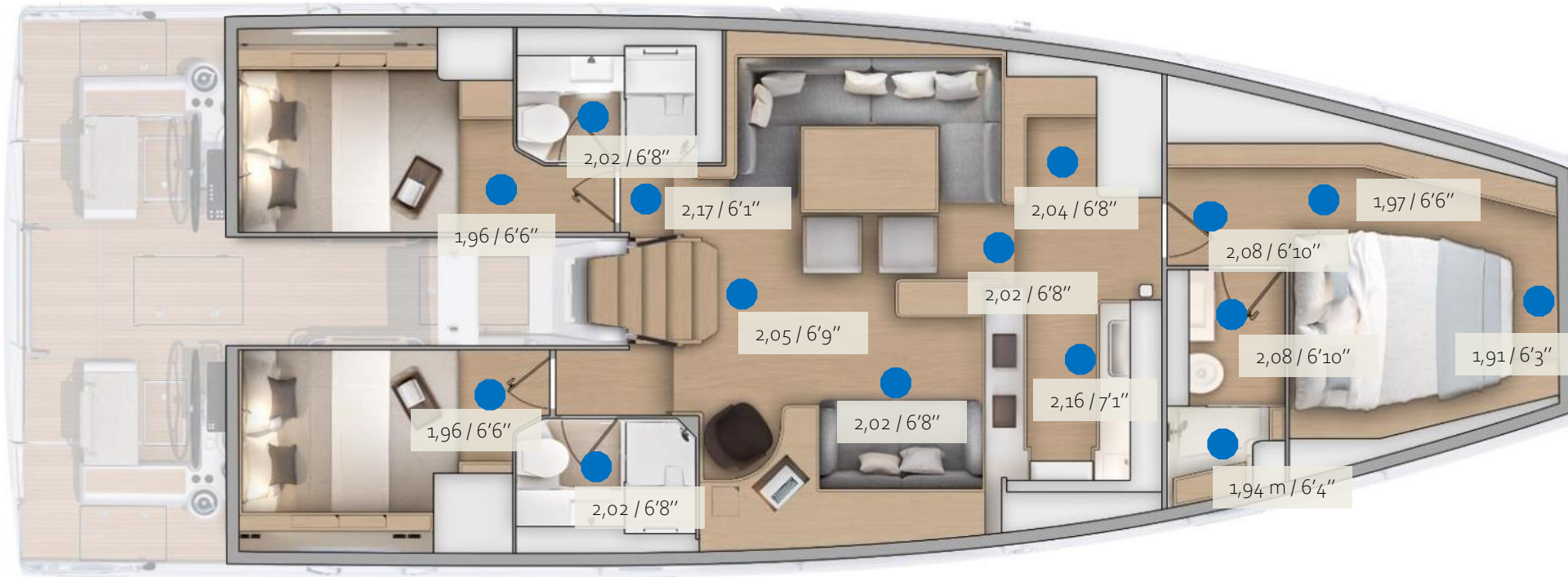


3 cabins 3 heads version

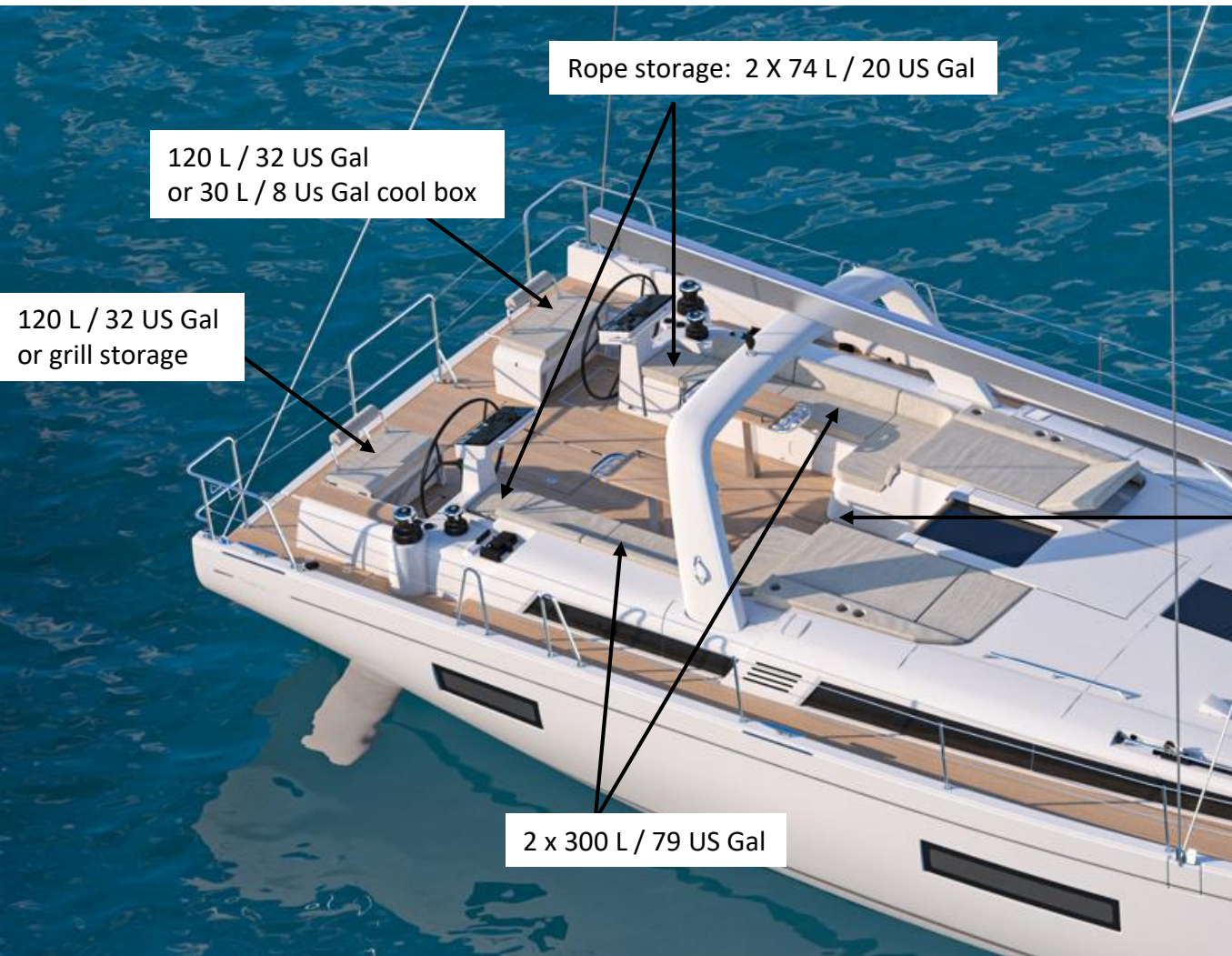


4 cabins 4 heads version





Storage volumes



Rope storage: 2 X 74 L / 20 US Gal

120 L / 32 US Gal
or 30 L / 8 Us Gal cool box

120 L / 32 US Gal
or grill storage

2 x 300 L / 79 US Gal

Space for 12 place liferaft:
0,96 m x 0,59 m x 0,40 m /
3'2" x 1'11" x 1'4"

Galley:

Standard storage volume: 1324 L / 350 US Gal

Storage volume with full options: 881 L / 233 US Gal



Port galley:

Standard storage volume : 413 L / 109 US Gal

with full options : 150 L / 40 US Gal

14 L = 4 US Gal
 15 L = 4 US Gal
 40 L = 11 US Gal
 44 L = 12 US Gal
 52 L = 14 US Gal
 65 L = 17 US Gal
 143 L = 38 US Gal

Galley :

Standard storage volume: 1324 L / 350 US Gal

Storage volume with full options: 881 L / 233 US Gal



Port galley:

Standard storage volume: 911 L / 241 US Gal

with full options: 731 L / 193 US Gal

Low unit:

3 drawers: 3 X 7 L / 2 US Gal

+

260 L / 69 US Gal below drawers

18 L = 5 US Gal

65 L = 17 US Gal

75 L = 20 US Gal

76 L = 20 US Gal

140 L = 37 US Gal

180 L = '8 US Gal

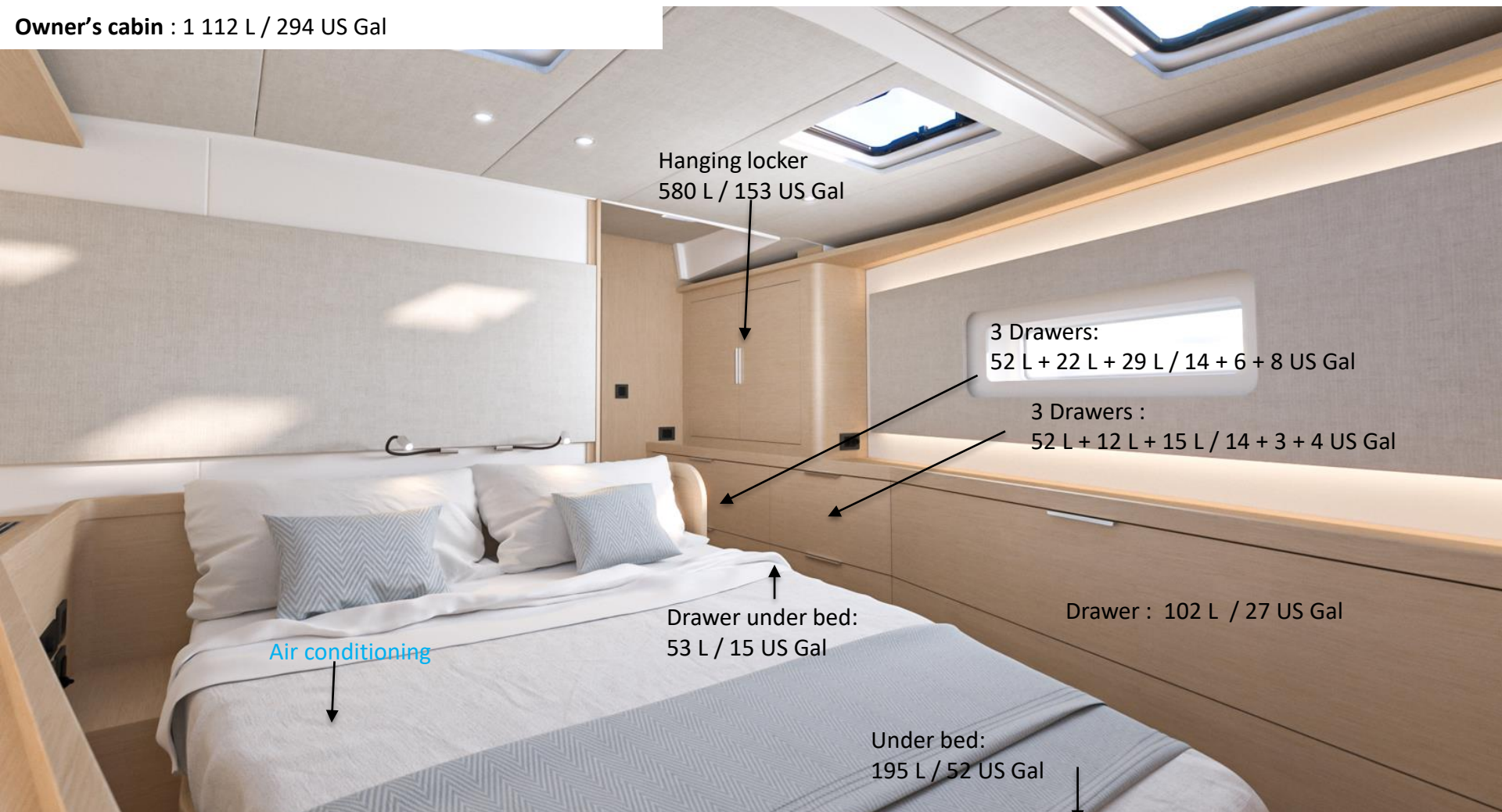
Saloon:

Standard storage volume: 597 L / 158 US Gal

Storage volume with AC: 447 L / 118 US Gal



Owner's cabin : 1 112 L / 294 US Gal



Hanging locker
580 L / 153 US Gal

3 Drawers:
52 L + 22 L + 29 L / 14 + 6 + 8 US Gal

3 Drawers :
52 L + 12 L + 15 L / 14 + 3 + 4 US Gal

Drawer under bed:
53 L / 15 US Gal

Drawer : 102 L / 27 US Gal

Air conditioning

Under bed:
195 L / 52 US Gal

Starboard aft cabin:

Standard storage volume : 662 L / 175 US Gal
with full options: 52 L / 14 US Gal



100 L / 26 US Gal under bed
or air conditioning unit

Port aft cabin:

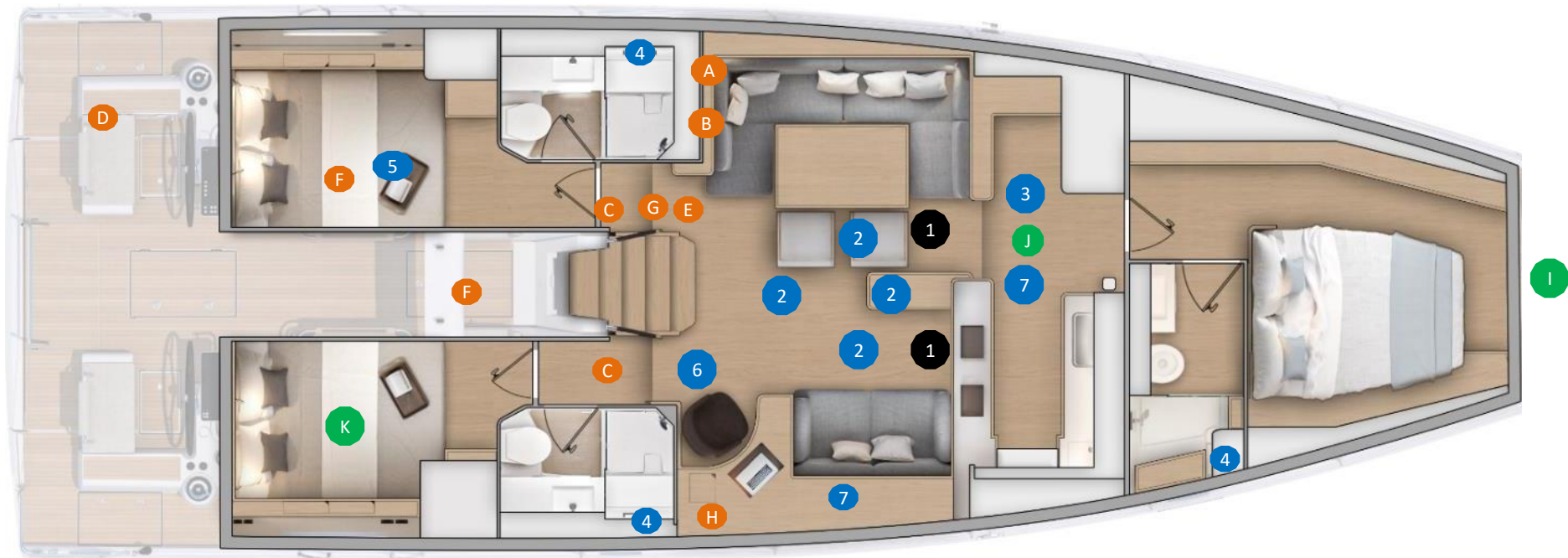
Standard storage volume: 493 L / 130 US Gal
with full options: 393 L / 104 US Gal



100 L / 26 US Gal under bed
or air conditioning unit

The background is a solid blue color. In the top-left corner, there are several overlapping, semi-transparent light blue curved shapes that resemble stylized waves or the edges of large circles. In the bottom-right corner, there is a single, larger light blue curved shape, also semi-transparent, that appears to be part of a larger circle or wave pattern.

Location for technical equipments



1 Fuel tank. 2 x 250 L / 66 US Gal - standard

2 Freshwater tank. 4 x 200 L / 53 US Gal - standard

3 Water maker. 100 L - 26US Gal /h - **option**

4 Holding tank. 64 L / 17 US Gal - standard

5 Water heater; 60 L / 16 US Gal- standard

6 Plumbing board(accumulator tank-water units....)

7 Bilge pump

A 24V Electrical panel

B Inverter 2 000 VA 24 V – 230 V – **Trim Level**

C 2 x AGM service batteries (140 Ah) - standard

D 1 Battery charger (100 Ah) - standard

E 1 Enginebattery AGM (50 Ah) - standard

F Generator 11 KVA - **finition**

G Switch off

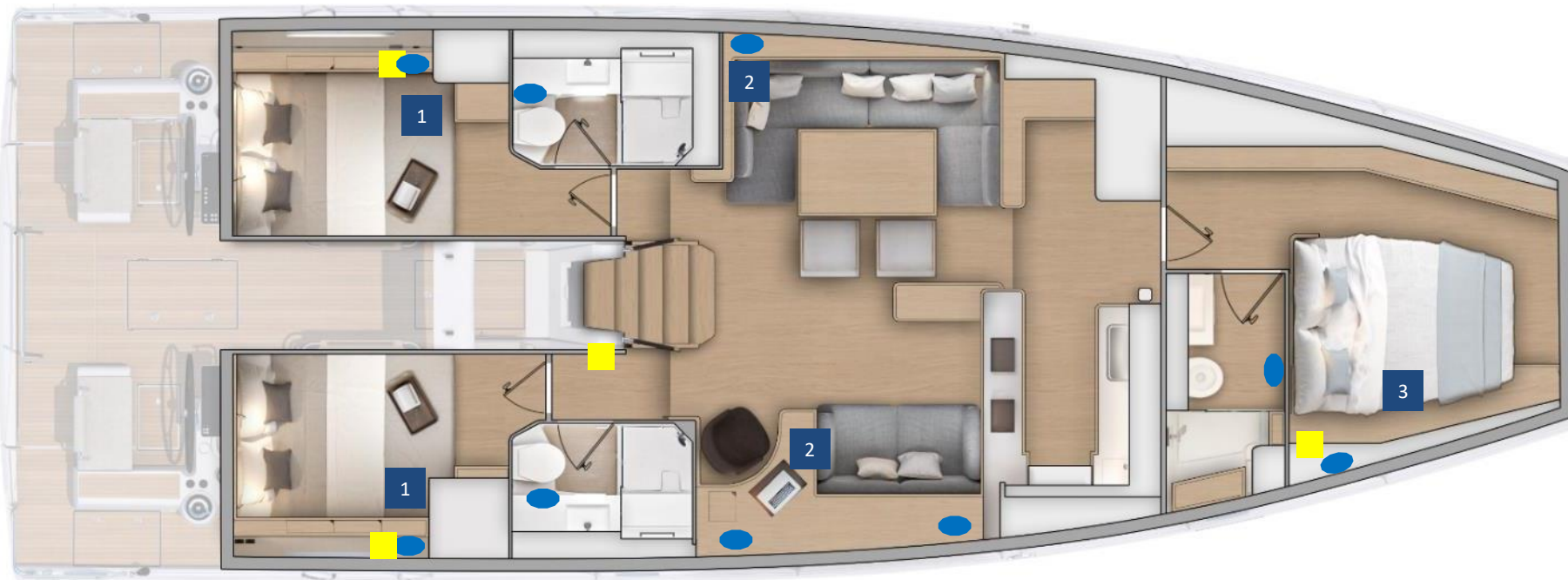
H 24V Electrical panel

I Bow thruster. 24V- standard

J Sensor **option**

K Stern thruster **trim level**

Included in Luxe trim level



1

Air conditioning unit 8 000 BTU per cabin



Air conditioning outlet

2

Air conditioning unit 2 x 12 000 BTU



Thermostat

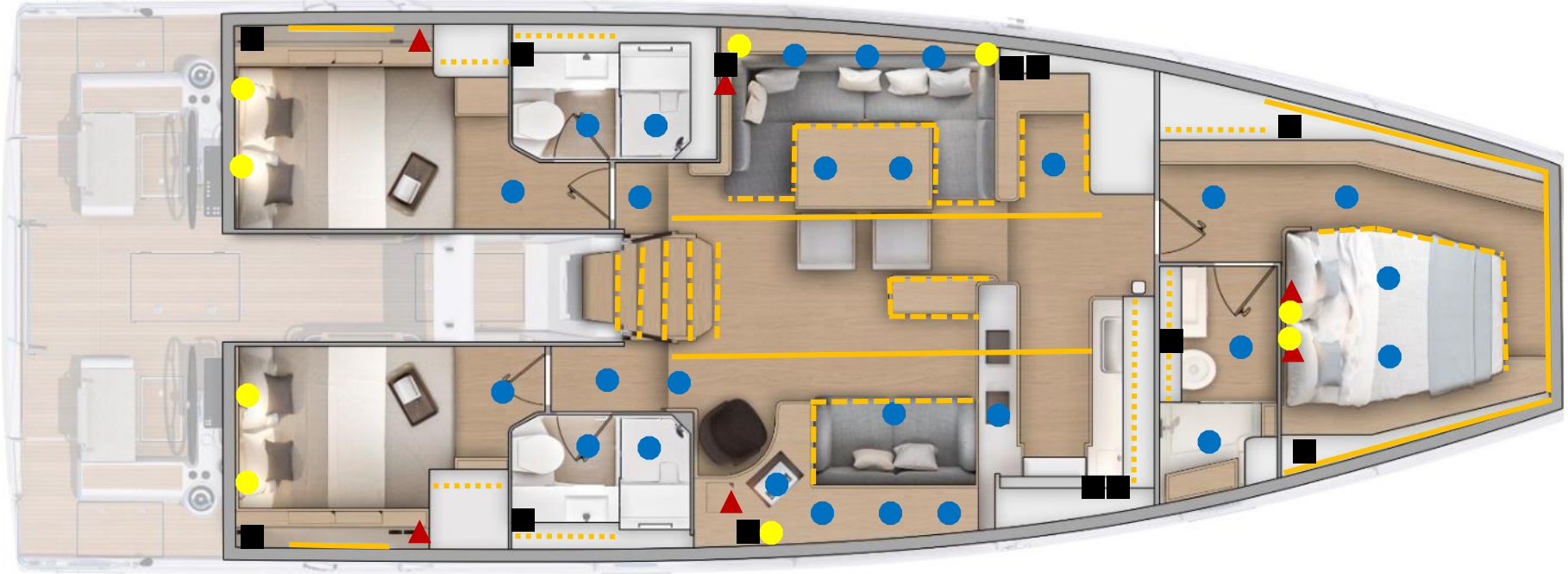
3

Air conditioning unit 16 000 BTU

The background is a solid blue color with several large, overlapping, curved shapes in a lighter shade of blue, creating a modern, abstract design.

Lighting

AC and USB sockets location



- LED strip (High)
- LED strip (Low)
- LED strip (inside furniture)

- USB socket
- 230V socket
- Reading light
- Overhead light