

# *Gran Turismo 35*



# *Gran Turismo 35*

INTRODUCTION	EXTERIOR	INTERIOR	INNOVATIONS
Specifications	Key points	Salon / Cabin	Innovations
Side Elevation	Galley	Head	TECHNICAL
Layout	Dimensions	Mid Cabin	Mooring kit
Key points	Wheelhouse	Dimensions	Technical equipment
	Dimensions	Headroom	Outlets
			Air Conditioning
			Audiovisual
			Air draft
			Performances



SPECIFICATIONS

PROVISIONAL SPECS

MAIN SPECIFICATIONS	DATA	
Length Overall	11,20m	36'9"
Hull Length	9,78m	32'1"
Overall Beam	4,65m	15'3"
Water Draft (full load)	1,09m	3'7"
Air Draft (included radar support, light load)	4,26m	13'12"
Light Displacement	5,336 kg	11 761 lbs
Berths	2_2	
EC Certification	B8 / C10	
Architect	Michael Peters Yacht Design	
Designer	Andreani Design	



## CAPACITY



## Fuel

2 x 370 L (Standard)  
2 x 98 US gal (Standard)



## Water

160 L  
42 US gal



## Water hot tank

25 L  
7 US gal



## Black water tank

80 L  
21 US gal

## MOTORISATION / PERFORMANCE

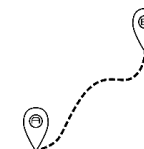


OB : 2 X 300 HP  
OB : 2 X 350 HP  
OB : 2 X 400 HP



## Speed Max

44 kts  
Provisional specs

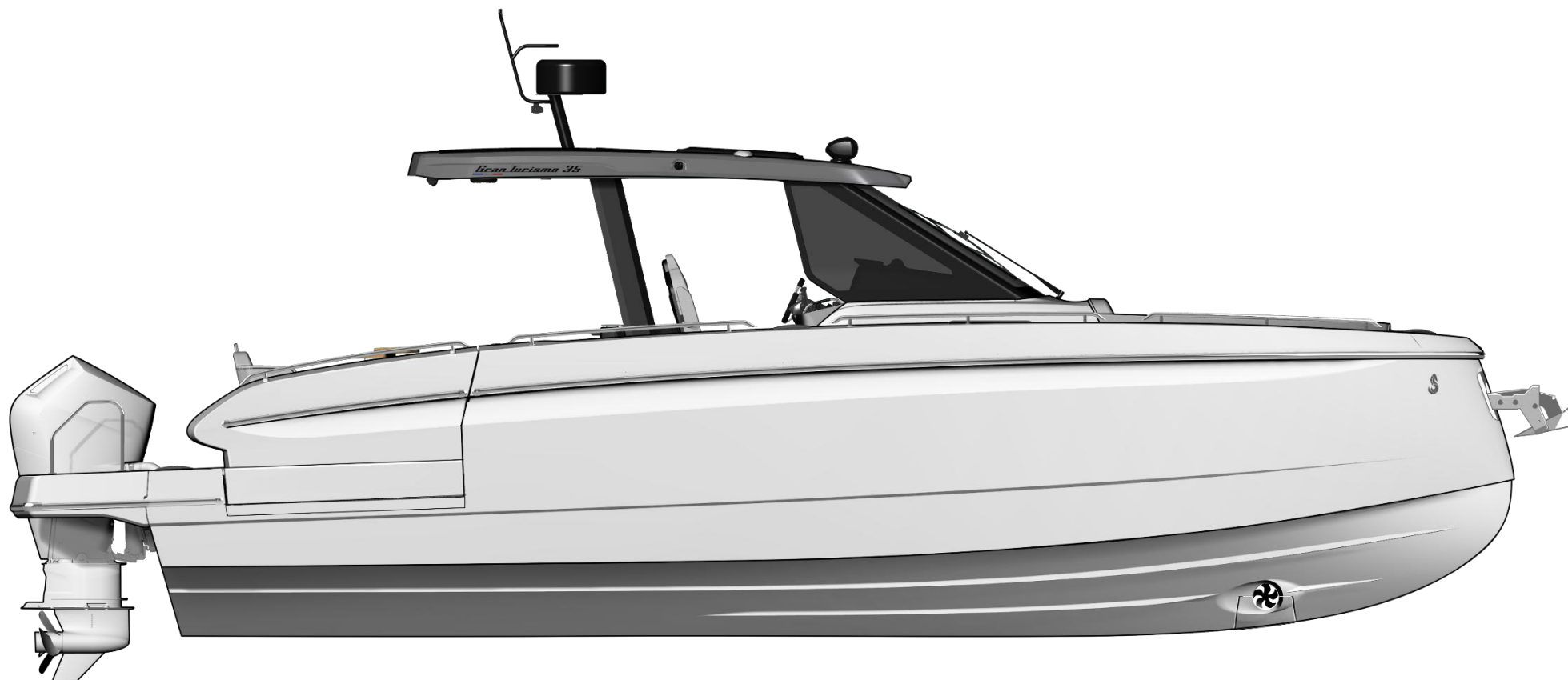


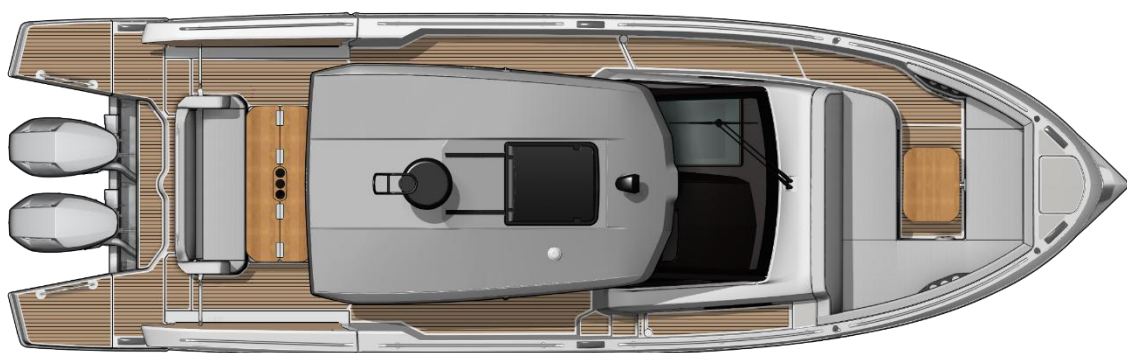
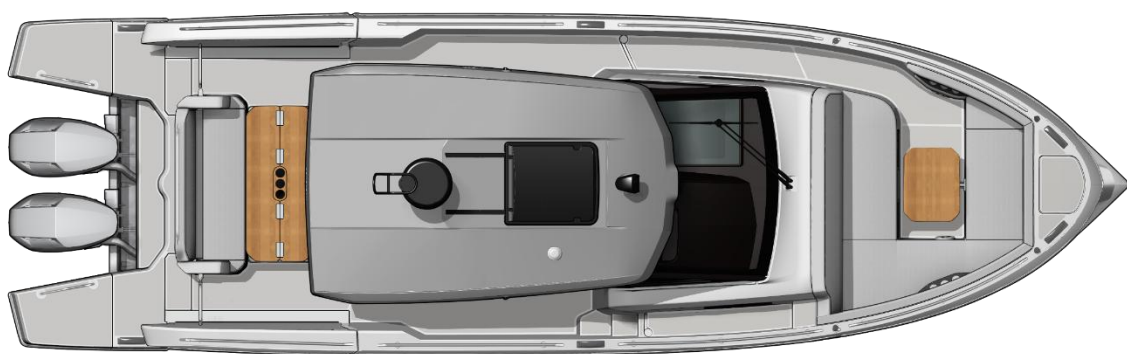
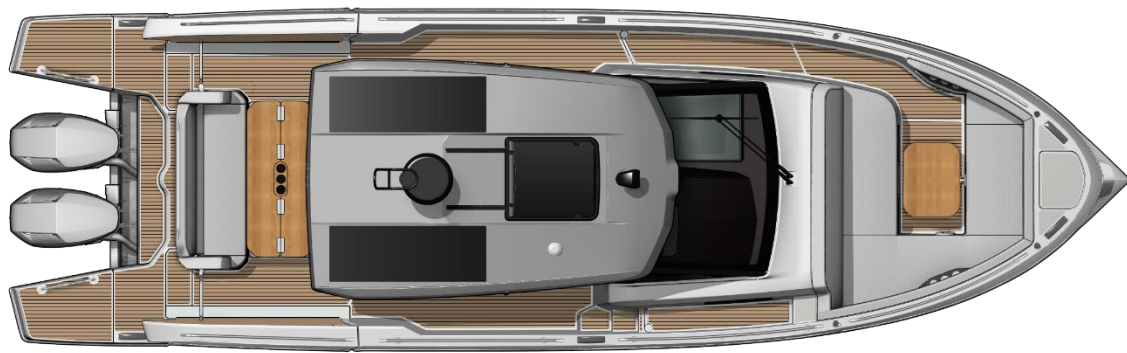
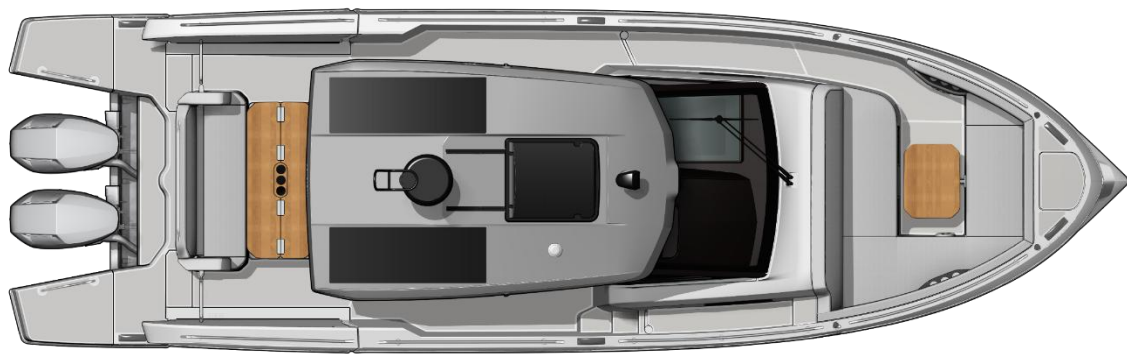
## Autonomy

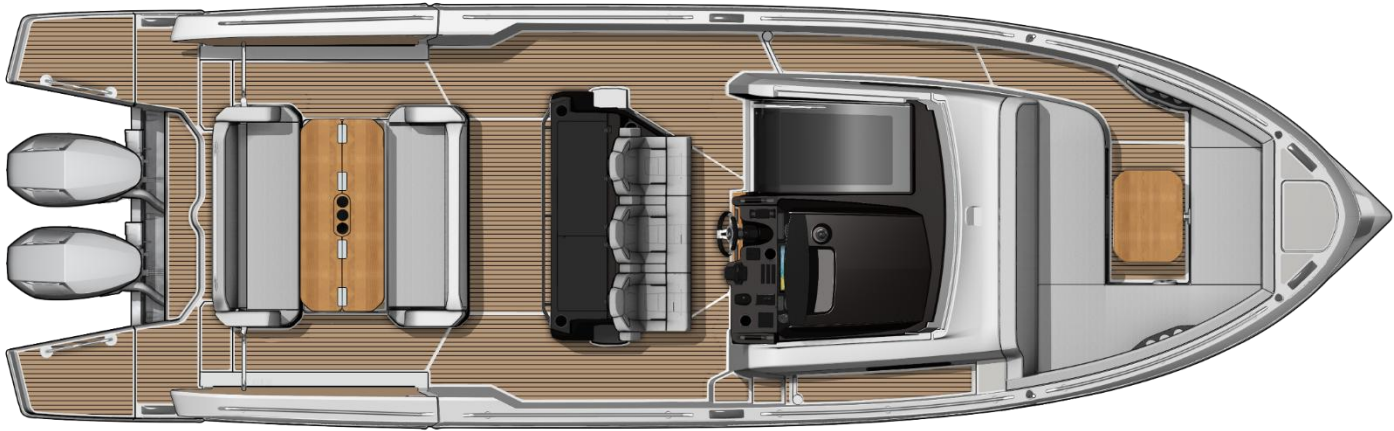
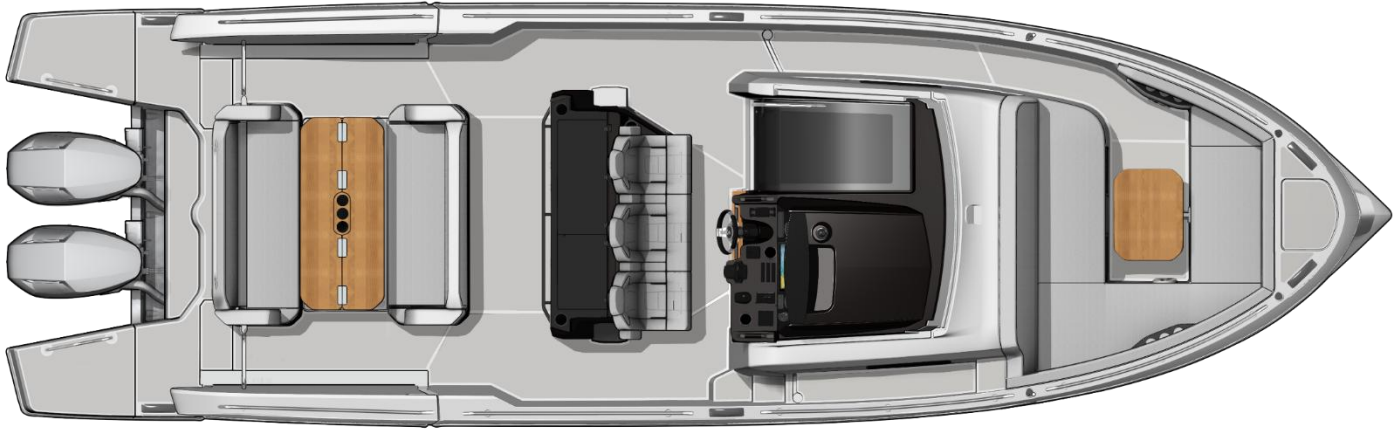
2 x 300 HP : 154 nm @ 25 knots\*  
2 x 350 HP : 177 nm @ 24,5 knots\*  
2 x 400 HP : 160 nm @ 25,7 knots\*  
(\*10% fuel reserve)

\*10% fuel reserve, zero sea state, clean hull & drivetrain

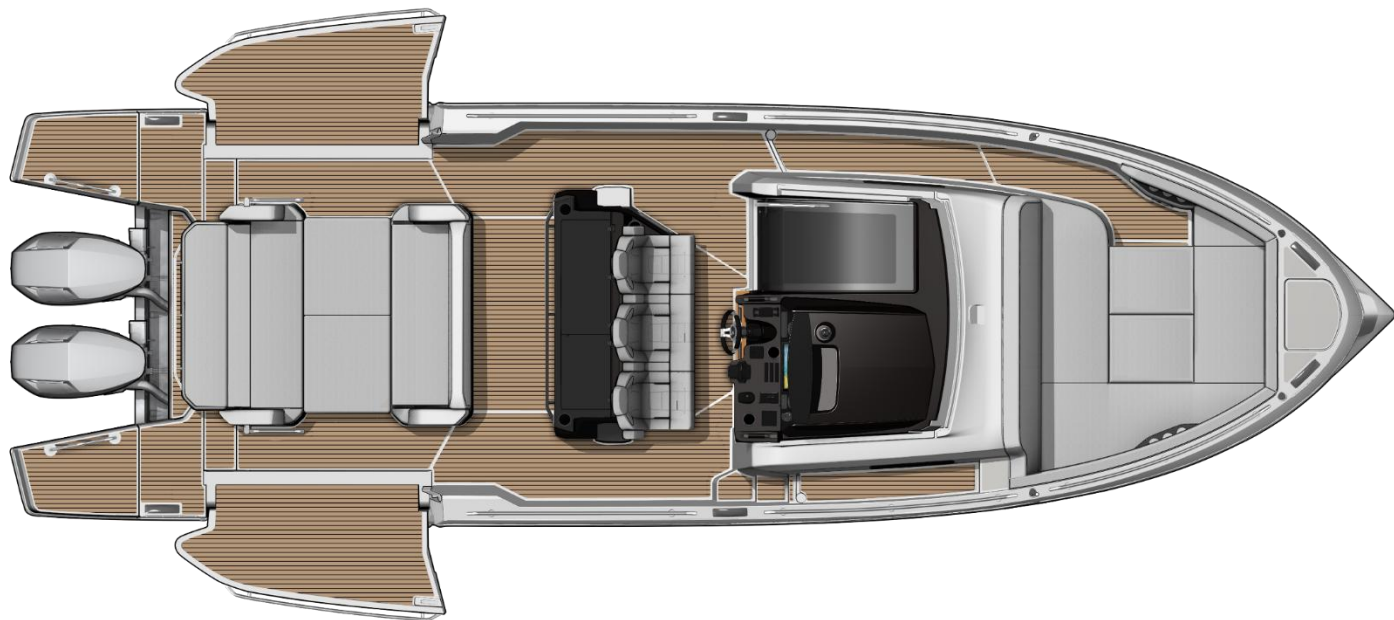
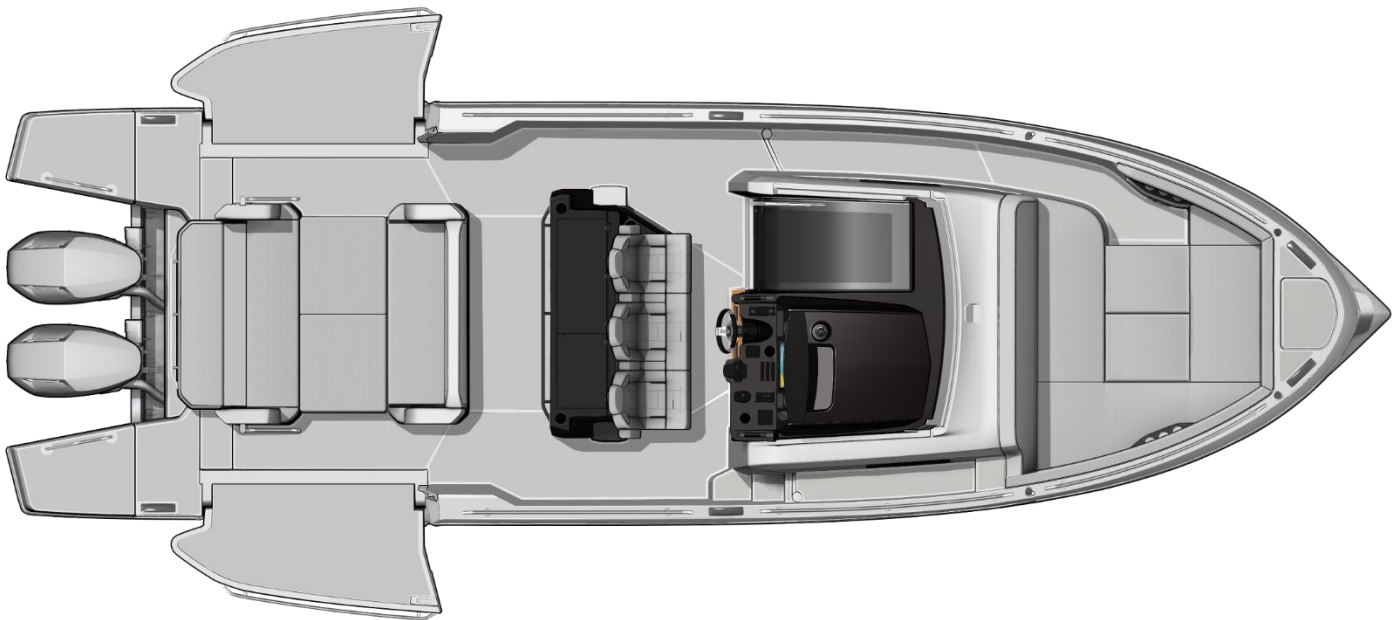


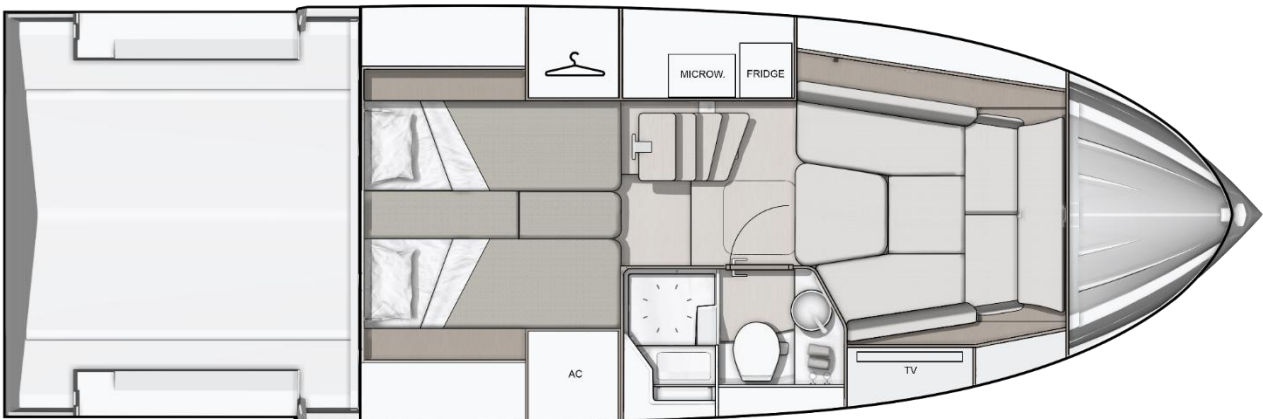
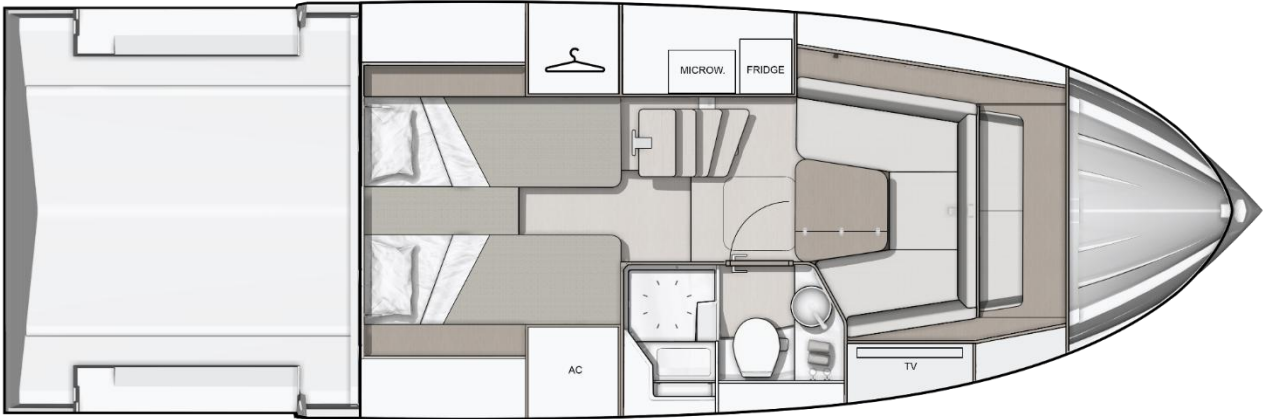












# Gran Turismo - KEY RANGE SELLING POINTS

## VILLA LIVING

Increased exterior space for a better user experience

## OPTIMUM DRIVE

Deliver an enhanced sports focus driving experience

## STYLE & ELEGANCE

« Design to be remarkable » : powerful design profile and lines that build a strong, purposeful identity



The new Gran Turismo range has been created following these Japanese design philosophies :

### Interior Kanso (simplicity) :

calm interior spaces with ambient lighting and surfaces

### Exterior Yugen (gracefulness) :

The elegant low profile shape & styling allows a calm well proportioned presence on the water



- Purposeful clean and graceful exterior lines – following Yugen philosophy
- Safe & easy circulation – safe passage in front of outboards (No pit of cables)
- Socializing exterior layout :
  - 2 large salons : one in the cockpit one at foredeck both with sunpad conversion
  - full equipped exterior galley
  - opened on sea : 2 large side balconies
  - optimized protection : T-TOP and full windshield
- A comfortable interior :
  - Stylish lounge , with bar & entertainment
  - Bathroom with separate shower cubicle
  - Mid cabin with berth
- Gyro stabiliser option
- Optional « Silent yacht » Solar panels & Lithium Batterie

# EXTERIOR





## Exterior - Key Points

Optional telescopic shade

Manual or electrical  
opening roof

Face to face cockpit seat  
with orientable backrest

Hidden electric socket,  
water and fuel inlet

Large aft platform  
winglets

Large folding cockpit table on twin electric legs



# Exterior - Key Points

Large sunpad

Telescopic ladder

Large balconies



## Exterior – Key Points





## Exterior - Galley

*Gran Turismo 35*

Black corian worktop

Gas hob (standard)

Storage

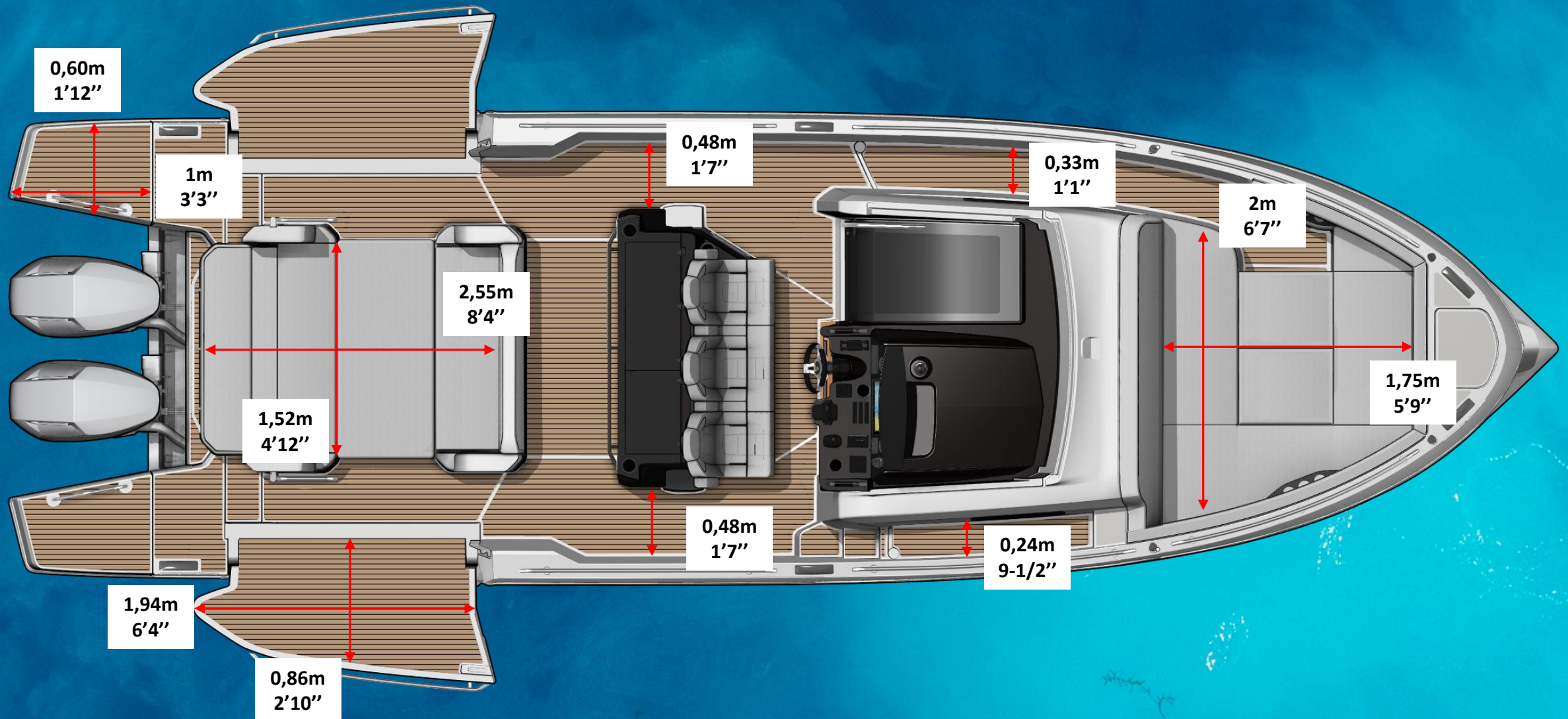
Fridge (49L)

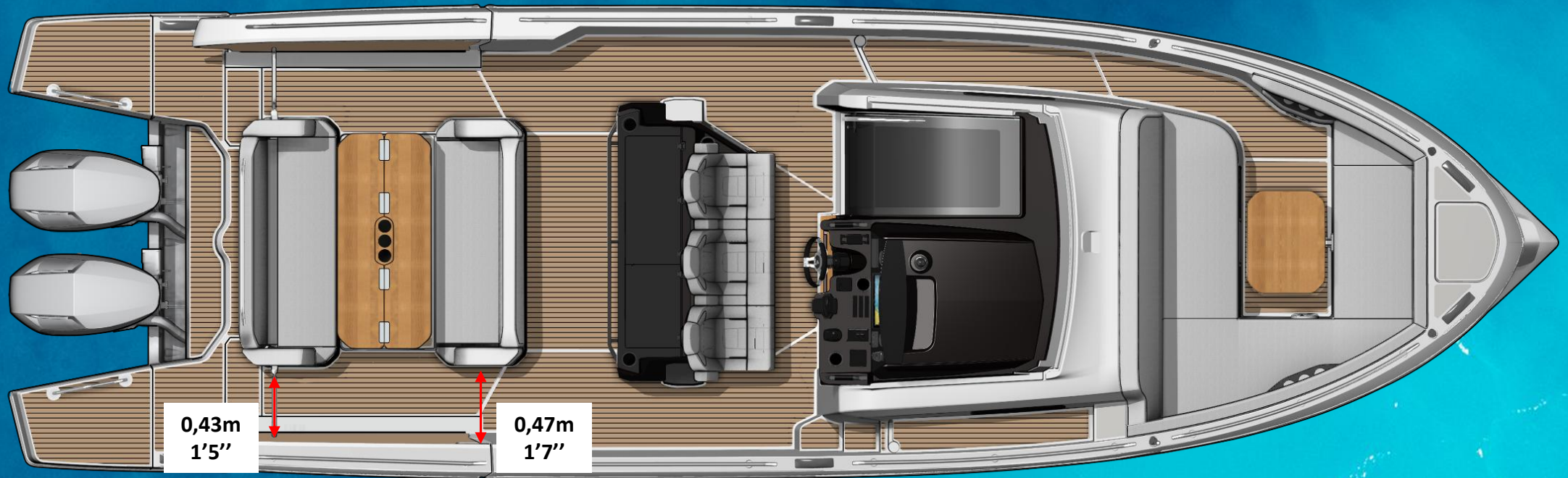
Black GRP galley with sink and tap

Large access door to lower deck



# Exterior - Dimensions







# WHEELHOUSE





## Wheelhouse – Pilot Station

Large and protective windscreen

Full equipped pilot station (pack)

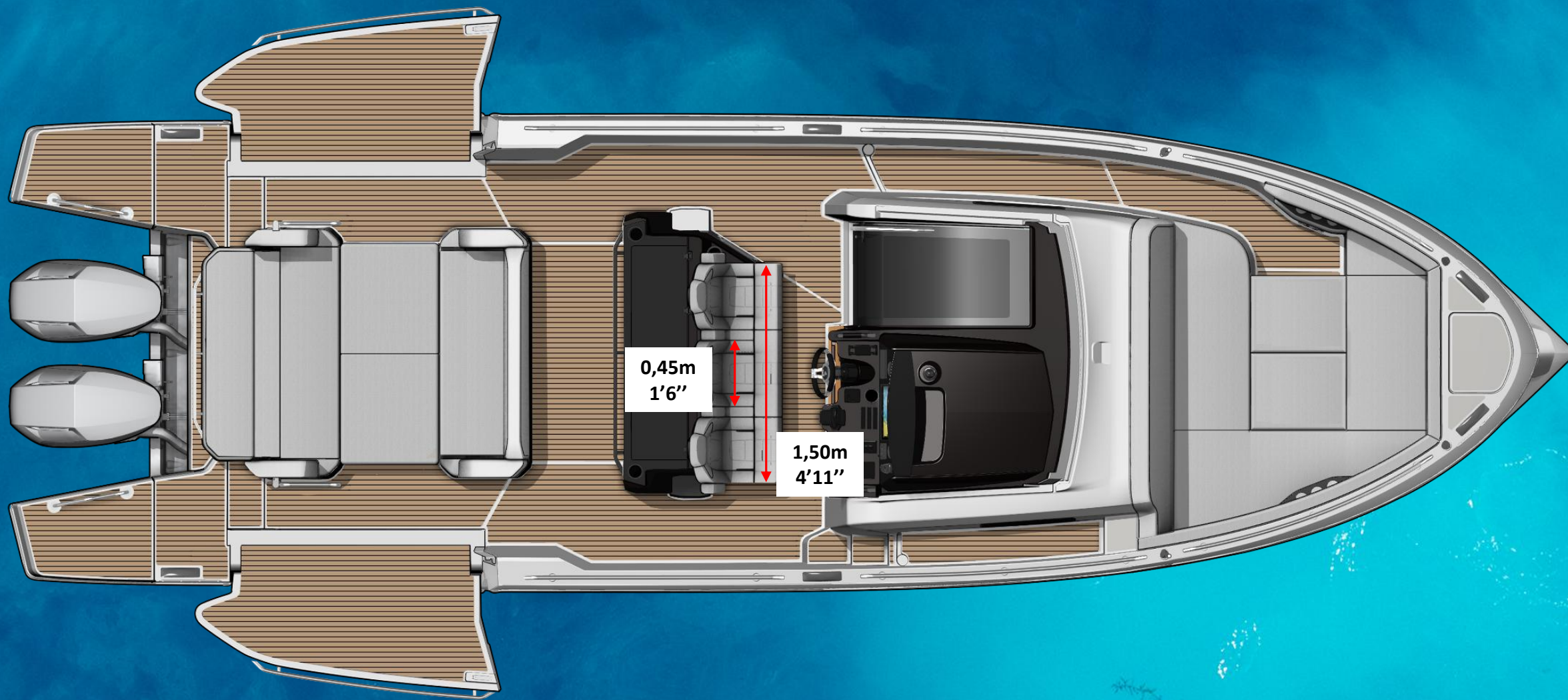
Airconditioning (option)

3 seats with  
bolster system  
and foldable  
armrest

Retractable cleats



# Wheelhouse - Dimensions



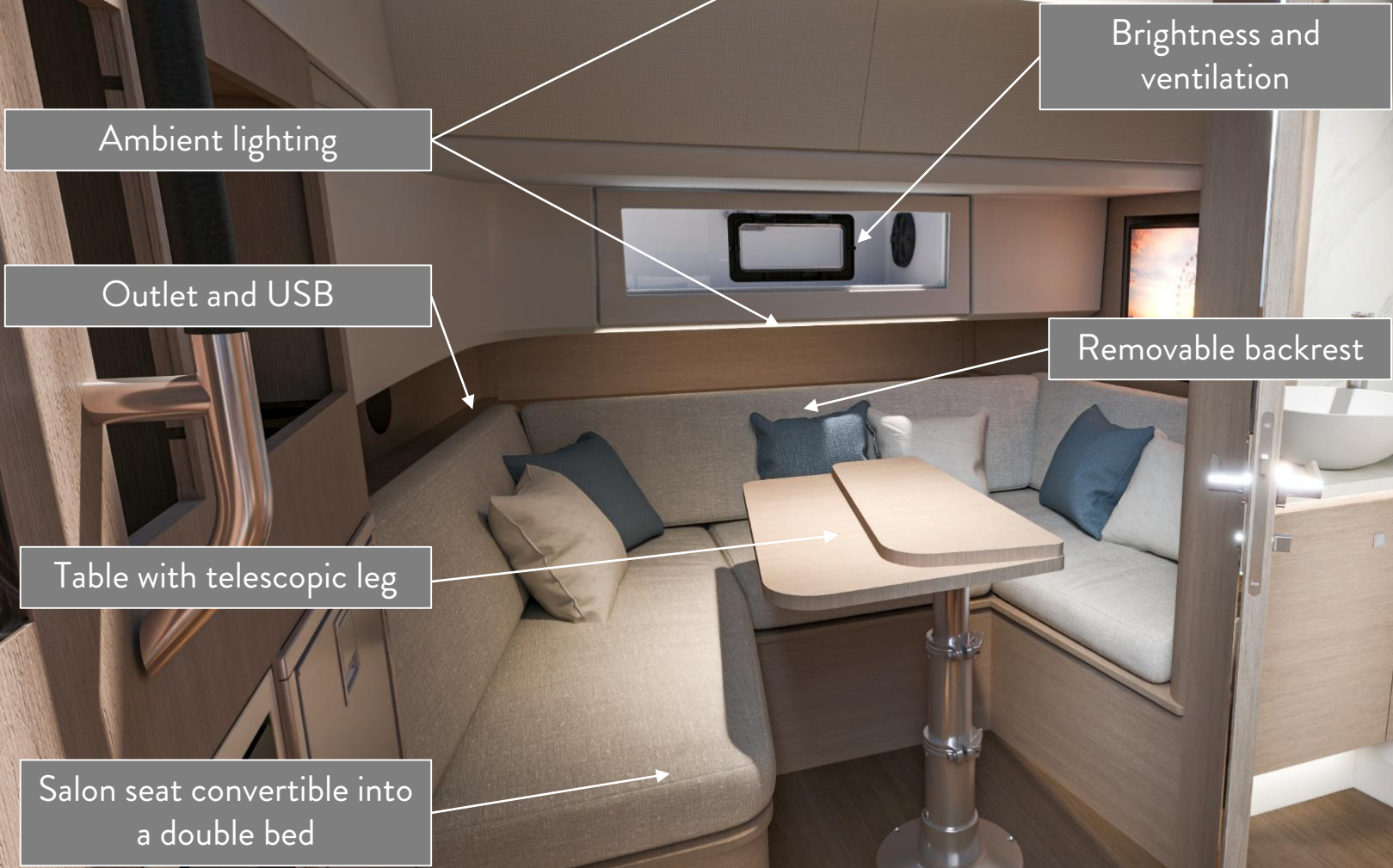


# LOWER DECK





# Lower deck – Salon / Cabin





Lower deck – Salon / Cabin

Prefit for 32" TV (option)

Large mirror

Ambient lighting



Infill cushion

Architectural stairs with LED



Opening window with  
blinded curtain

Bottle rack

Microwave (trim level)

Additional 49L fridge  
(option)

Storage

Shelves



## Lower deck - Head



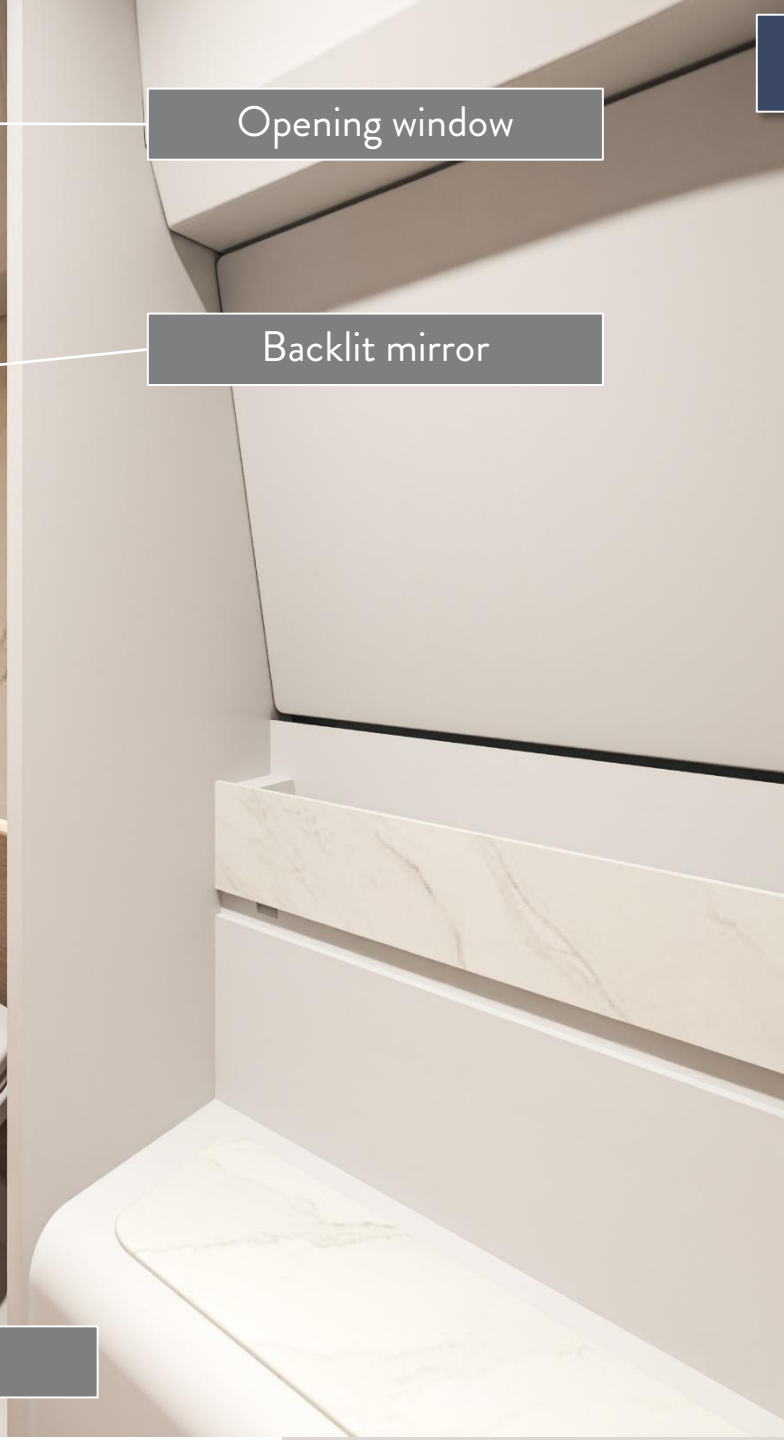
Worktop with LED illumination

Opening window

Backlit mirror

Shower with PMMA doors

Electric toilet





## Lower deck – Mid Cabin

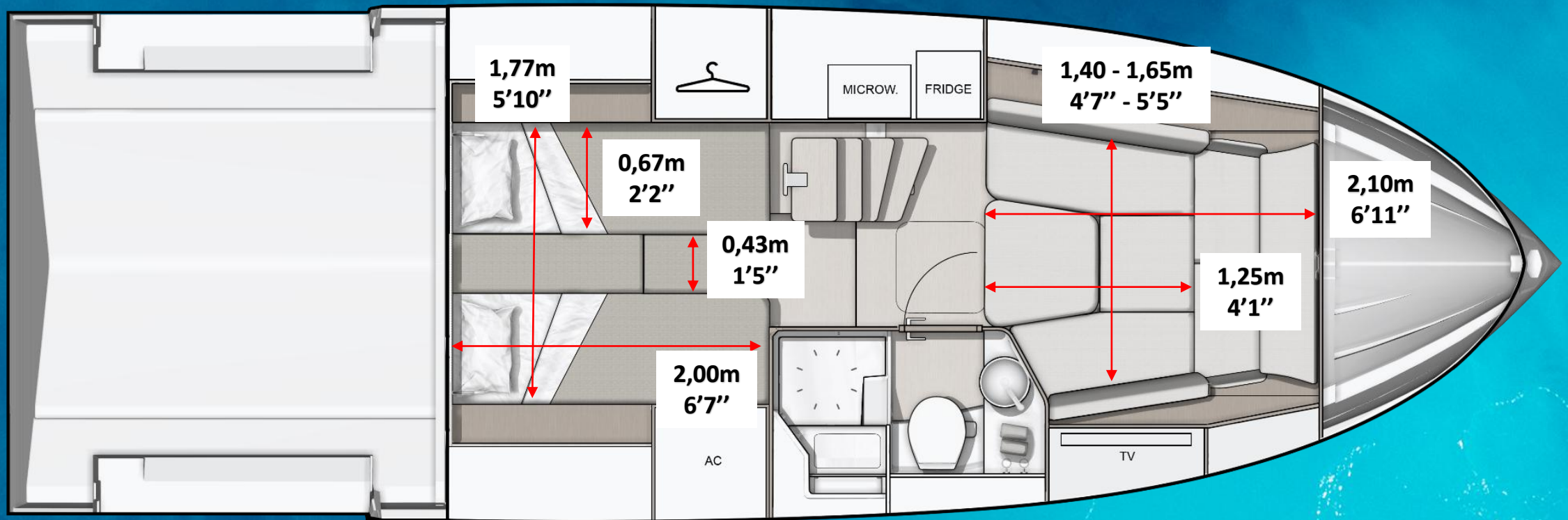
Reading lights with USB

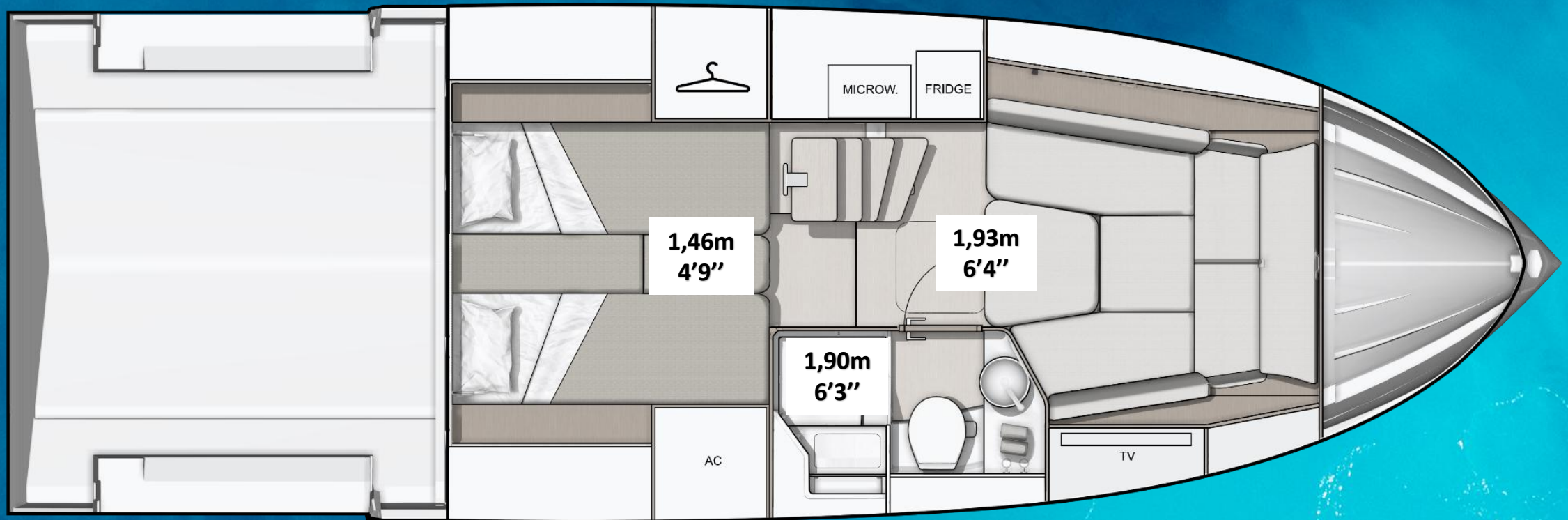
Ambient lighting and décor panel

2 single bed or  
1 large double bed

Wardrobe and storage

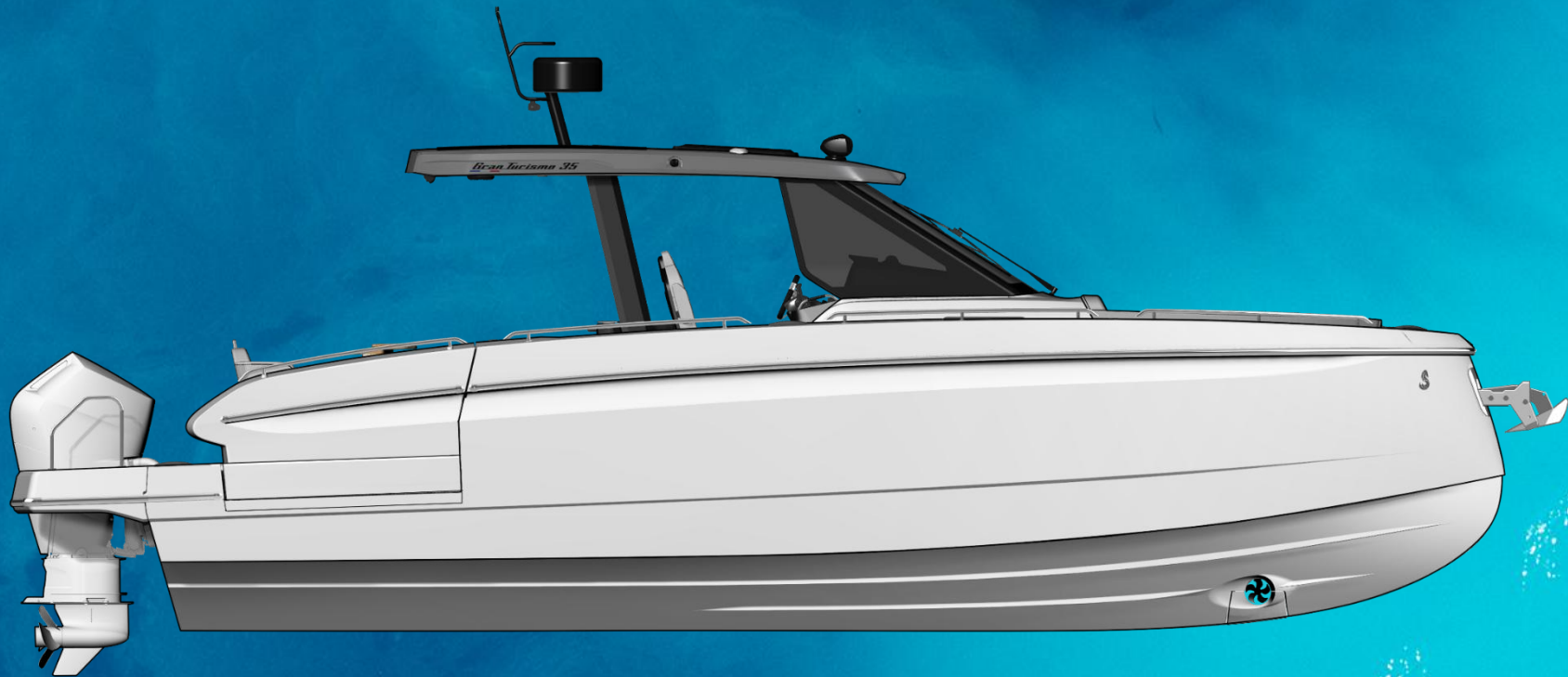








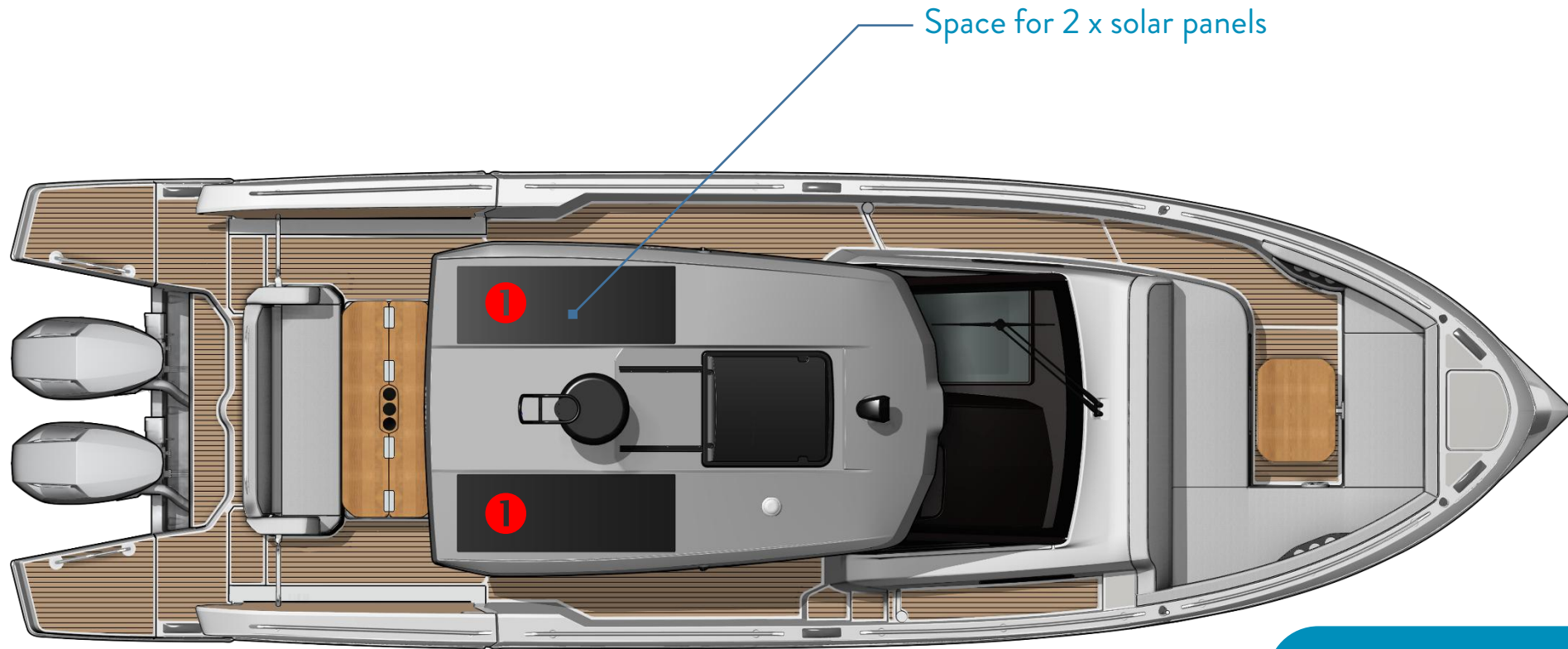
# INNOVATIONS



- Solar panels, lithium batteries and inverter options
  - Light and sound pack Fusion HiFi & Lumishore lighting with hull « light blades »
  - Alpine Version



# Solar panels, lithium batteries and inverter options



- ① - 2x 160w solar panels on hard top (-10% efficiency) = 288 wp  
- Power bank: 3x Lithium batteries 12v 330 Ah (990 Ah total)  
- Inverter 5KVA (12v)

“Silent boat” delivers up to 5\* hours of on anchor autonomy without the need to run the engines or plug the shore power.

\*PROVISIONAL FIGURES

NOT IN COMBINATION WITH GENERATOR OPTION

# Light and Sound pack **LUMISHORE + FUSION** A Garmin Brand

The Lumishore lighting system, integrated through Garmin's OneHelm™, is a sophisticated marine LED lighting solution offering full customization, intuitive control, and seamless integration with existing navigation equipment.

## Integration and Centralized Control

**Plug-and-play connection:** The Lumi-Link Command Center connects directly to Garmin's MFD via a single cable, simplifying installation and reducing clutter at the helm.

**User-friendly interface:** Access an intuitive control interface directly from the MFD screen, featuring a color wheel for selecting hues and sliders to adjust brightness and white balance.

**Zonal lighting control:** Manage lighting by specific zones on the boat, with customizable presets for different moods or activities.

## Advanced Lighting Features

**CRGBW multicolor lighting:** Supports red, green, blue, warm white, and cool white LEDs, allowing complete ambiance customization.

**Dynamic modes:** Includes pre-programmed effects like strobe, color sweep, color cycle, and a unique "Sound-to-Light" mode that syncs lighting with music.

**Customizable scenes:** Create personalized lighting scenes for various onboard experiences, from entertaining to relaxing.



Premium Fusion Apollo Unit + 8 premium speakers + Subwoofer RGBW  
Indirect Lumishore lighting for hull  
Underwater lights

*Indirect Lumishore lighting for cockpit and foredeck (trim level)*



# Alpine Version



## Alpine Design & Finishes:

Interior/exterior upholstery: Skai Light Grey & Navy Blue, embroidery + Alpine logos  
Matching driver/copilot seats + Alpine Isotta  
Fanete steering wheel (Skai + Alcantara)

## Elegant black ambience :

Black lacquered kitchen furniture (RAL 9005)  
Black hardtop with Alpine logos and decoration  
Black taps, washbasin, handles, pushlock  
Black details: handrails, table legs, cleats, cup holders, liston, gates

## Lighting & hull:

Spot and courtesy lighting, 100% black  
Gelcoat hull Silver Grey + Alpine decoration





# TECHNICAL

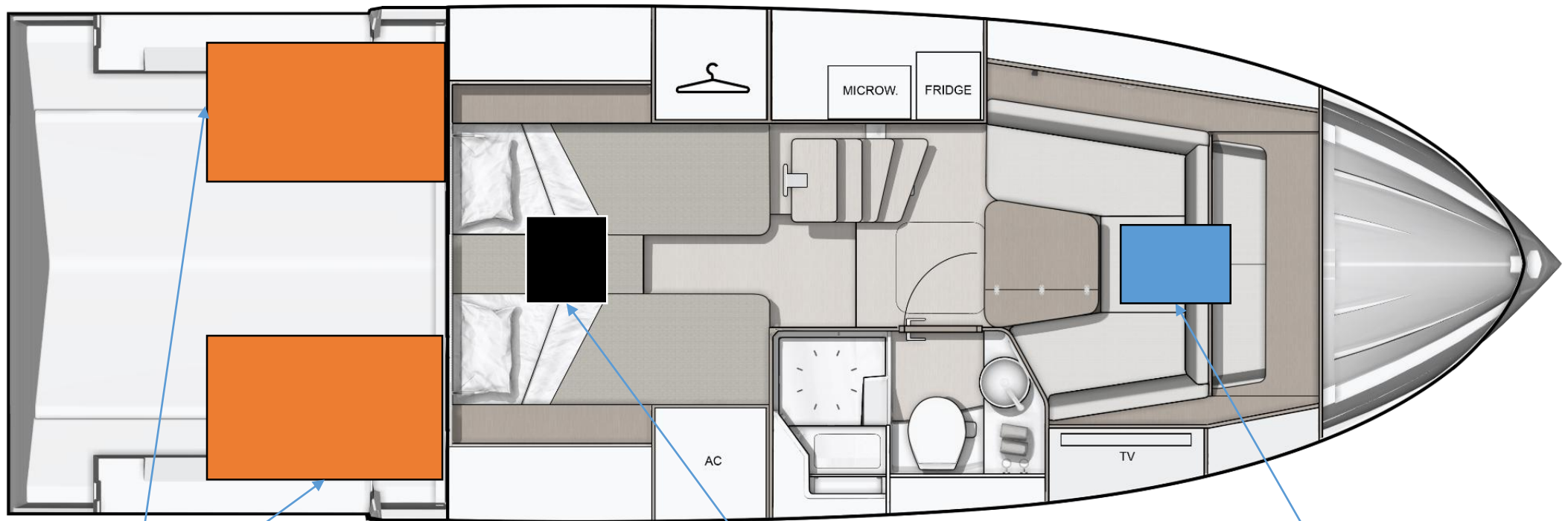




## MOORING ANCHORING KIT

Chain lenght	28 m	91'10"
Chain diameter	10 mm	½"
Anchor weight	16 kg	35 lbs
Rope length (4)	18 m	59'1"
Rope diameter	16 mm	5/8"
Inflatable fender dimensions with covers (6)	635 x 200 mm	2'1" x 8"

# TECHNICAL EQUIPMENT LOCATION



## Gas tank

(EUROPE : 2 x 370 L - US : 2 x 413 L / 2 x 109 US GAL)

## Black water tank

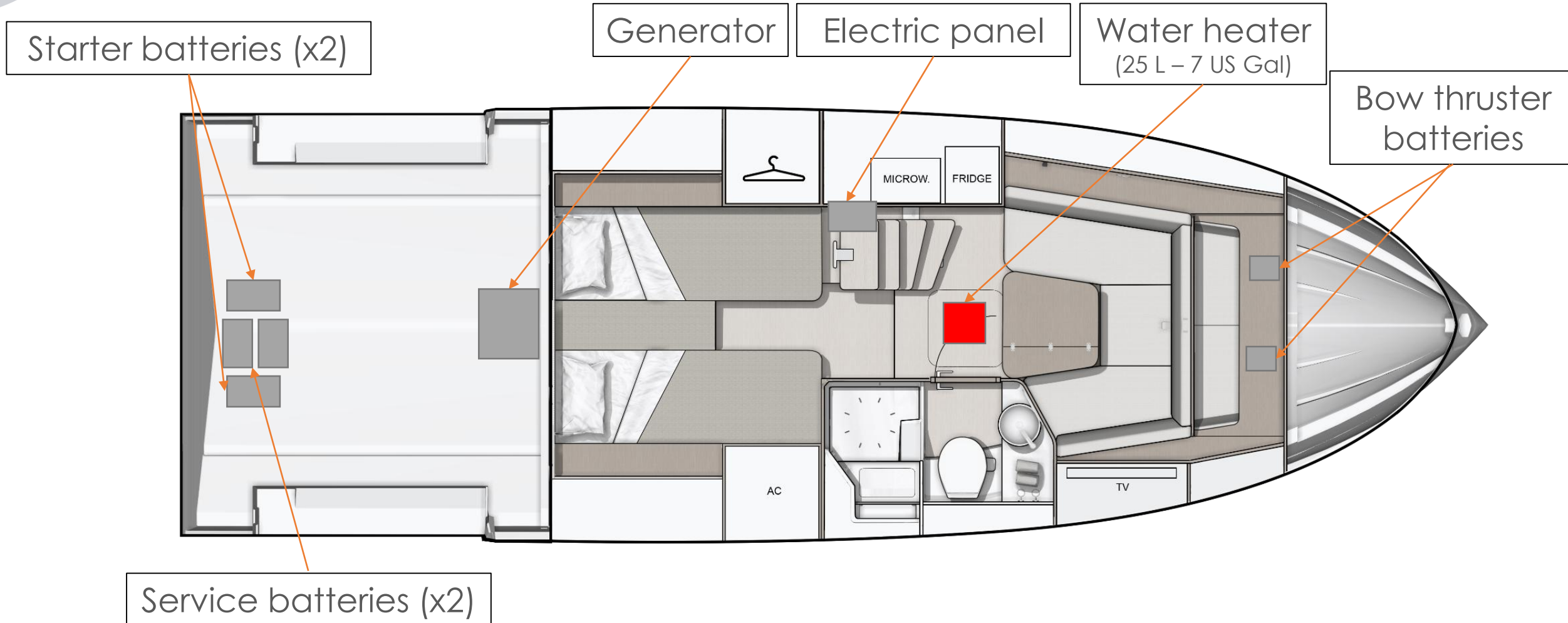
(80 L - 21 US GAL)

## Water tank

(160 L - 42 US GAL)

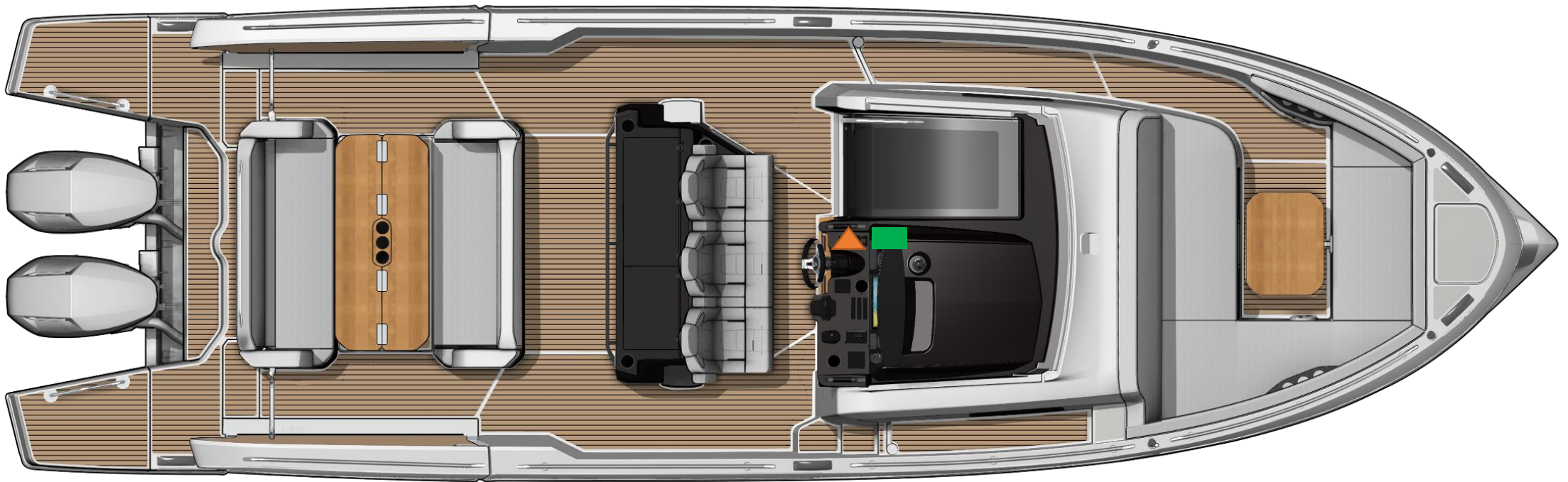


# TECHNICAL EQUIPMENT LOCATION



## ELECTRICAL & USB OUTLETS

### MAIN DECK



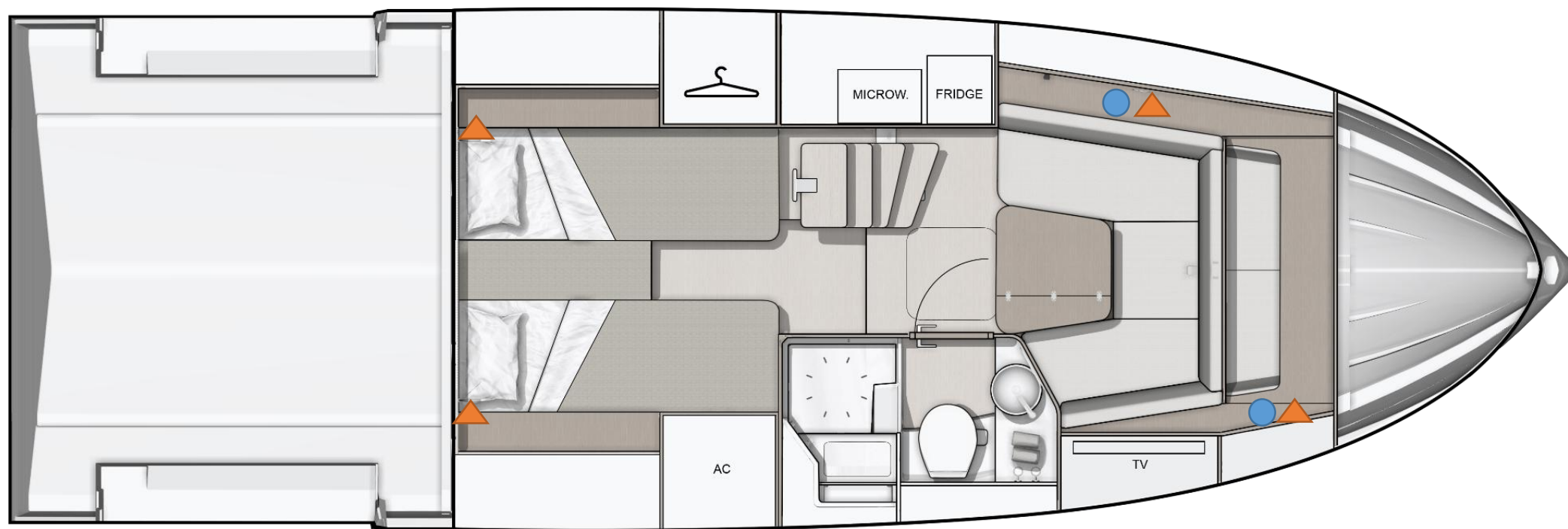
- Induction charger
- Electrical outlet
- ▲ USB outlet



# ELECTRICAL & USB OUTLETS

## LOWER DECK

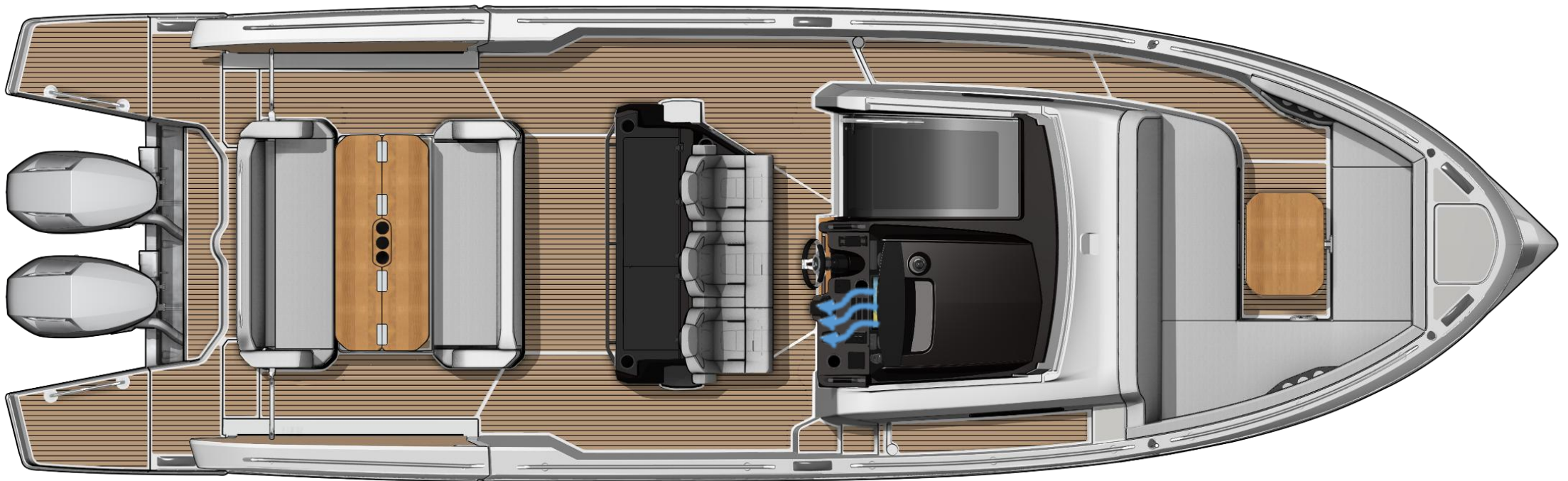
TECHNICAL



● Electrical outlet

▲ USB outlet

# AIR CONDITIONING MAIN DECK



TOTAL:  
12 000  
BTU

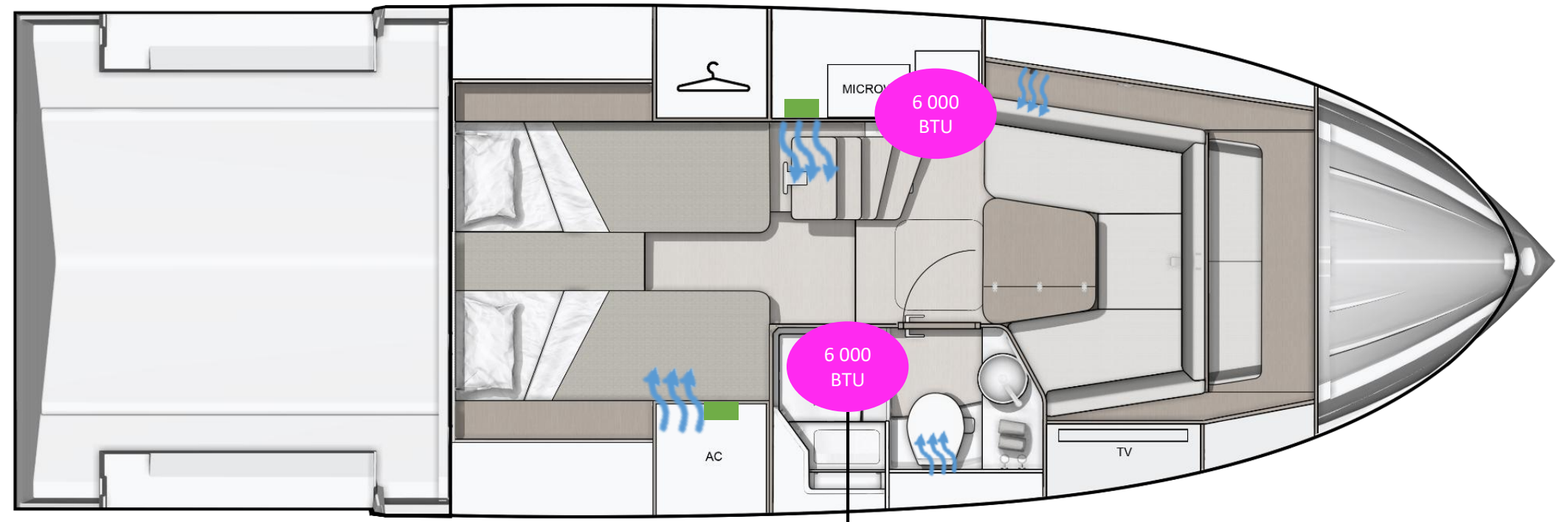
Reverse cycle air conditioning

 A/C Vents

 Control



# AIR CONDITIONING LOWER DECK



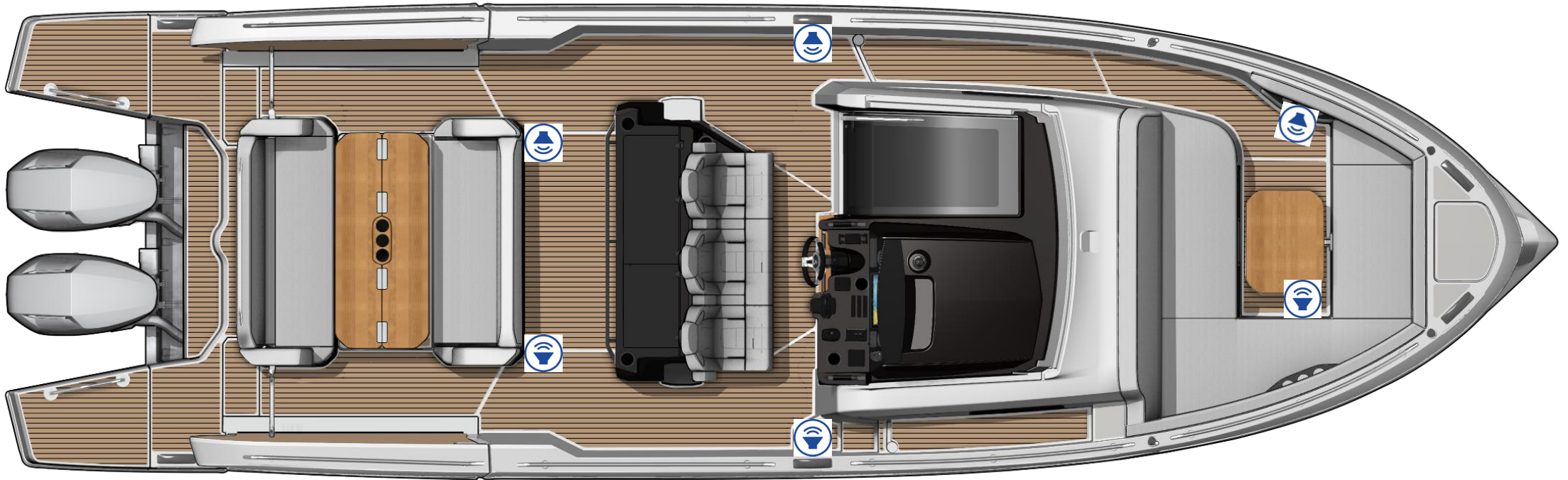
To the pilot station ←

TOTAL:  
12 000  
BTU

Reverse cycle air conditioning

 A/C Vents  
 Control

# AUDIO VISUAL MAIN DECK – PACK SOUND



Speakers

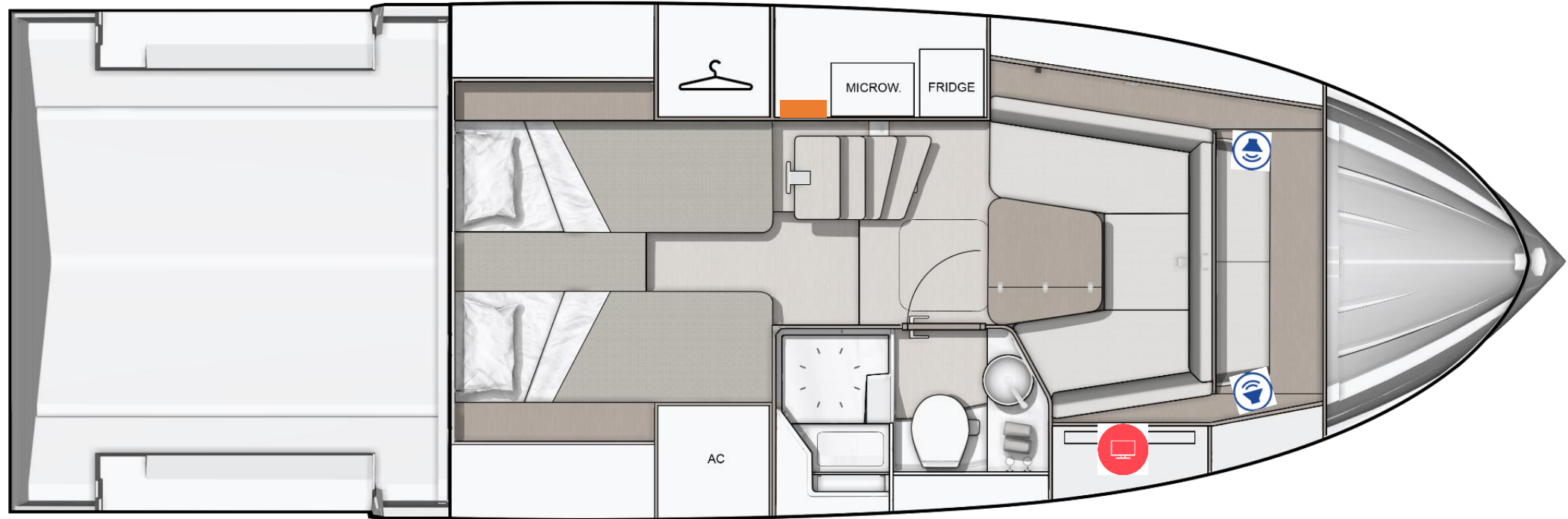


Fusion unit



# AUDIO VISUAL

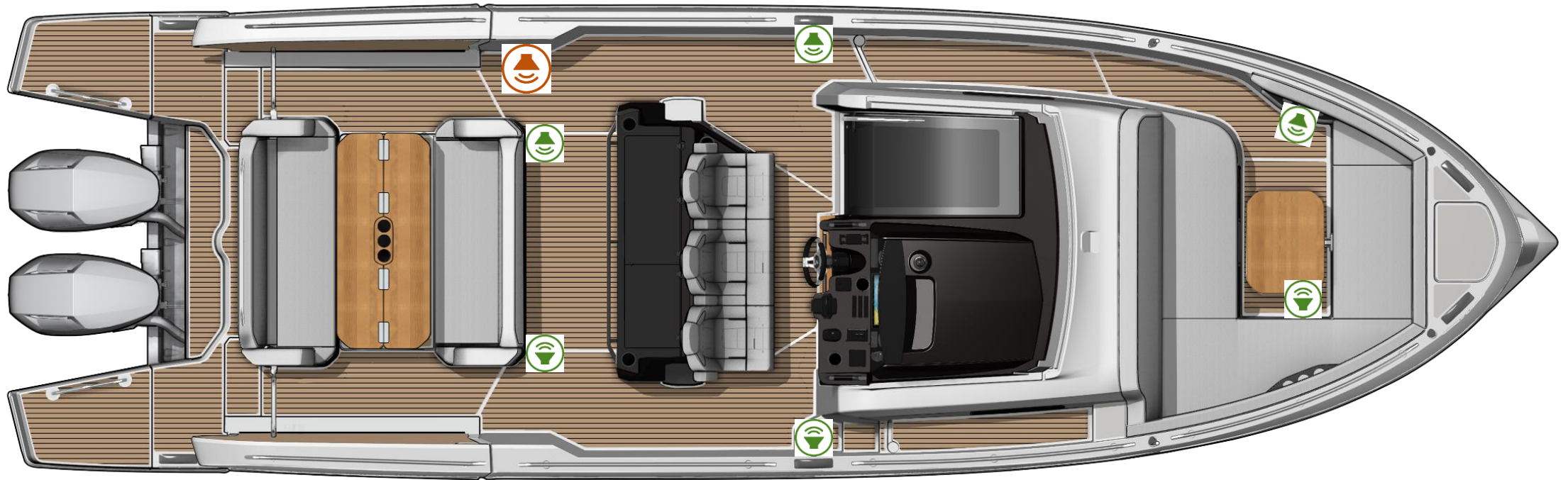
## LOWER DECK – PACK SOUND



-  Speakers
-  Fusion unit
-  TV emplacement  
(MAX VIP CABIN TV SIZE: 32")

# AUDIO VISUAL

## MAIN DECK – PACK LIGHT & SOUND

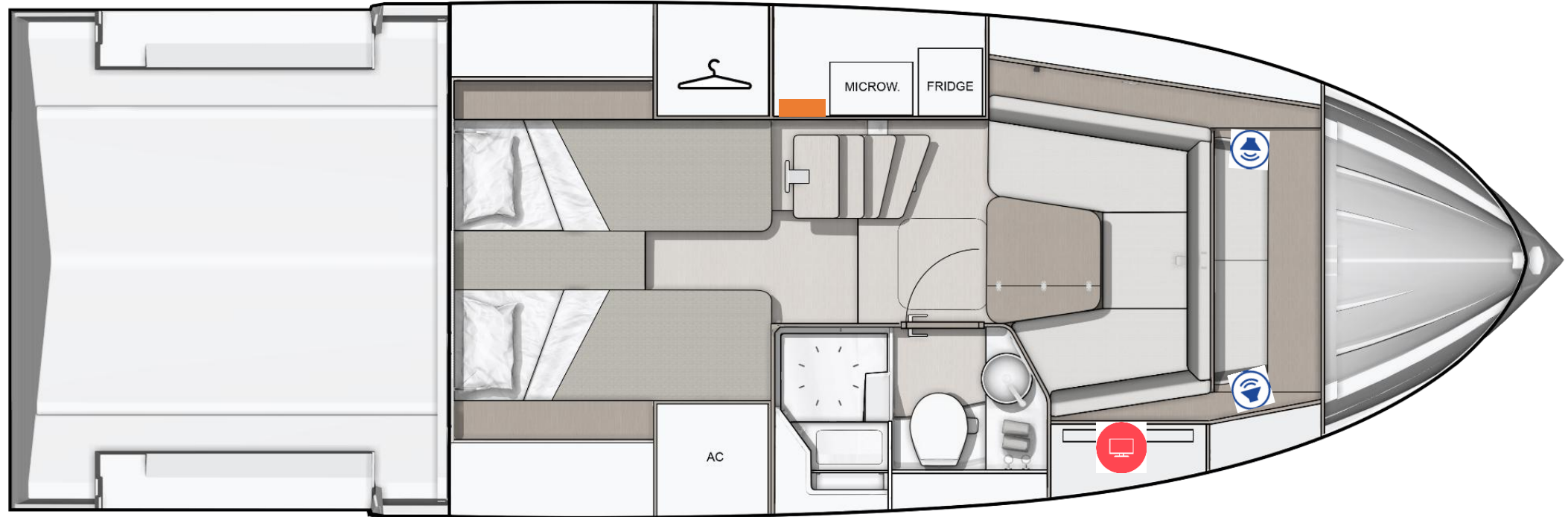


-  Speakers
-  RGBW Premium Speakers
-  Fusion unit
-  RGBW Premium Subwoofer



# AUDIO VISUAL

## LOWER DECK – PACK LIGHT & SOUND



Speakers



Fusion unit



TV emplacement  
(MAX VIP CABIN TV SIZE: 32")



## PROVISIONAL SPECS

*Air draft light load*

*Draught full load*



# PERFORMANCE

## Gran Turismo 35



### MERCURY 2X300 V8

#### Caractéristique / Specifications:

2 moteurs Hors Bord / Out Board engines: V8 300

Hélice / Propeller: REVOLUTION 4 17P

Déplacement total du bateau / Total displacement of boat tested: 8370 Kg

Regime en tours par minute au tableau de bord / RPM on instrument panel	Vitesse en nœuds moyenne au radar / Average speed on the radar in knots	Consommation moteur en litres par heure / consumption engine in liter an hour	Rendement / Efficiency (NM/L)	Consommation totale en USGal / heure Total consumption in GPH	Rendement / Efficiency (NM/USGal)	Autonomie en NM (avec réserve 10%) /Range in NM (with 10% fuel supply)	Remarques / Comments
600	2,3 Nds	4,0 l	1,8l/miles	1,1 USGal	6,7 GAL/NM	405,00 MN	
1000	3,6 Nds	11,0 l	3,1l/miles	2,9 USGal	11,6 GAL/NM	235,64 MN	
1500	6,2 Nds	16,8 l	2,7l/miles	4,4 USGal	10,3 GAL/NM	263,57 MN	
2000	7,9 Nds	25,2 l	3,2l/miles	6,7 USGal	12,1 GAL/NM	225,71 MN	
2500	9,2 Nds	36,8 l	4,0l/miles	9,7 USGal	15,2 GAL/NM	179,02 MN	
3000	10,4 Nds	55,4 l	5,4l/miles	14,6 USGal	20,3 GAL/NM	134,51 MN	
3500	13,8 Nds	73,2 l	5,3l/miles	19,3 USGal	20,2 GAL/NM	135,25 MN	
4000	19,1 Nds	97,2 l	5,1l/miles	25,7 USGal	19,3 GAL/NM	141,11 MN	
4500	25,4 Nds	118,0 l	4,6l/miles	31,2 USGal	17,6 GAL/NM	154,98 MN	
5000	30,6 Nds	155,6 l	5,1l/miles	41,1 USGal	19,3 GAL/NM	141,59 MN	
5500	34,4 Nds	181,2 l	5,3l/miles	47,9 USGal	20,0 GAL/NM	136,69 MN	
6000	37,9 Nds	184,2 l	4,9l/miles	48,7 USGal	18,4 GAL/NM	148,14 MN	

Conditions optimales théoriques et purement indicatives des essais: /Optimal theoretical conditions, purely indicative for trials :

Coque neuve, vent 5nds, mer belle petit clapot, antifouling / new hull, wind 5 knots, nice little choppy sea, antifouling

# PERFORMANCE

## Gran Turismo 35



### MERCURY 2X350 V10

#### Caractéristique / Specifications:

2 moteurs Hors Bord / Out Board engines: V10 350

Hélice / Propeller: REV X 19P

Déplacement total du bateau / Total displacement of boat tested: 8455 Kg

Regime en tours par minute au tableau de bord / RPM on instrument panel	Vitesse en nœuds moyenne au radar / Average speed on the radar in knots	Consommation moteur en litres par heure / consumption engine in liter an hour	Rendement / Efficiency (NM/L)	Consommation totale en USGal / heure Total consumption in GPH	Rendement / Efficiency (NM/USGal)	Autonomie en NM (avec réserve 10%) /Range in NM (with 10% fuel supply)	Remarques / Comments
600	3,3 Nds	7,0 l	2,1l/miles	1,8 USGal	8,0 GAL/NM	339,43 MN	
1000	5,0 Nds	12,0 l	2,4l/miles	3,2 USGal	9,1 GAL/NM	300,00 MN	
1500	6,9 Nds	20,6 l	3,0l/miles	5,4 USGal	11,3 GAL/NM	241,17 MN	
2000	8,8 Nds	34,4 l	3,9l/miles	9,1 USGal	14,8 GAL/NM	184,19 MN	
2500	10,4 Nds	44,0 l	4,2l/miles	11,6 USGal	16,0 GAL/NM	170,18 MN	
3000	13,5 Nds	64,4 l	4,8l/miles	17,0 USGal	18,1 GAL/NM	150,93 MN	
3500	16,3 Nds	82,2 l	5,0l/miles	21,7 USGal	19,1 GAL/NM	142,77 MN	
4000	24,5 Nds	99,6 l	4,1l/miles	26,3 USGal	15,4 GAL/NM	177,11 MN	
4500	30,0 Nds	128,0 l	4,3l/miles	33,8 USGal	16,2 GAL/NM	168,75 MN	
5000	33,8 Nds	177,8 l	5,3l/miles	47,0 USGal	19,9 GAL/NM	136,87 MN	
5500	36,0 Nds	227,6 l	6,3l/miles	60,1 USGal	23,9 GAL/NM	113,88 MN	
6000	41,5 Nds	226,8 l	5,5l/miles	59,9 USGal	20,7 GAL/NM	131,75 MN	
6150	42,0 Nds	230,0 l	5,5l/miles	60,8 USGal	20,7 GAL/NM	131,48 MN	

Conditions optimales théoriques et purement indicatives des essais: /Optimal theoretical conditions, purely indicative for trials:

Coque neuve, vent 5nds, mer belle petit clapot, antifouling / new hull, wind 5 knots, nice little choppy sea, antifouling



# PERFORMANCE

## Gran Turismo 35



### MERCURY 2X400 V10

Caractéristique / Specifications:

2 moteurs Hors Bord / Out Board engines: V10 400

Hélice / Propeller: REV X 20P

Déplacement total du bateau / Total displacement of boat tested: 8295 Kg

Regime en tours par minute au tableau de bord / RPM on instrument panel	Vitesse en nœuds moyenne au radar / Average speed on the radar in knots	Consommation moteur en litres par heure / consumption engine in liter an hour	Rendement / Efficiency (NM/L)	Consommation totale en USGal / heure Total consumption in GPH	Rendement / Efficiency (NM/USGal)	Autonomie en NM (avec réserve 10%) / Range in NM (with 10% fuel supply)	Remarques / Comments
600	2,4 Nds	8,2 l	3,4l/miles	2,2 USGal	12,9 GAL/NM	210,73 MN	
1000	4,1 Nds	13,6 l	3,3l/miles	3,6 USGal	12,6 GAL/NM	217,06 MN	
1500	6,2 Nds	19,0 l	3,1l/miles	5,0 USGal	11,6 GAL/NM	234,95 MN	
2000	8,1 Nds	38,0 l	4,7l/miles	10,0 USGal	17,8 GAL/NM	153,47 MN	
2500	10,3 Nds	48,0 l	4,7l/miles	12,7 USGal	17,7 GAL/NM	154,50 MN	
3000	14,5 Nds	69,0 l	4,8l/miles	18,2 USGal	18,0 GAL/NM	151,30 MN	
3500	17,7 Nds	82,0 l	4,6l/miles	21,7 USGal	17,5 GAL/NM	155,41 MN	
4000	25,7 Nds	104,0 l	4,0l/miles	27,5 USGal	15,3 GAL/NM	177,92 MN	
4500	29,2 Nds	136,0 l	4,7l/miles	35,9 USGal	17,6 GAL/NM	154,59 MN	
5000	34,6 Nds	184,0 l	5,3l/miles	48,6 USGal	20,1 GAL/NM	135,39 MN	
5500	37,7 Nds	248,0 l	6,6l/miles	65,5 USGal	24,9 GAL/NM	109,45 MN	
6000	42,0 Nds	251,0 l	6,0l/miles	66,3 USGal	22,6 GAL/NM	120,48 MN	
6300	44,2 Nds	259,0 l	5,9l/miles	68,4 USGal	22,2 GAL/NM	122,87 MN	

Conditions optimales théoriques et purement indicatives des essais: /Optimal theoretical conditions, purely indicative for trials :

Coque neuve, vent 5nds, mer belle petit clapot, antifouling / new hull, wind 5 knots, nice little choppy sea, antifouling